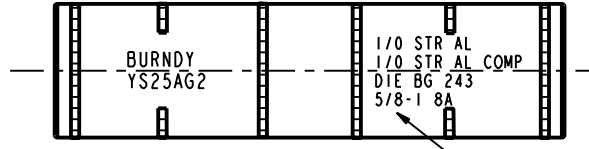
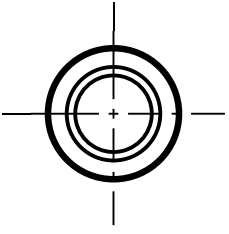
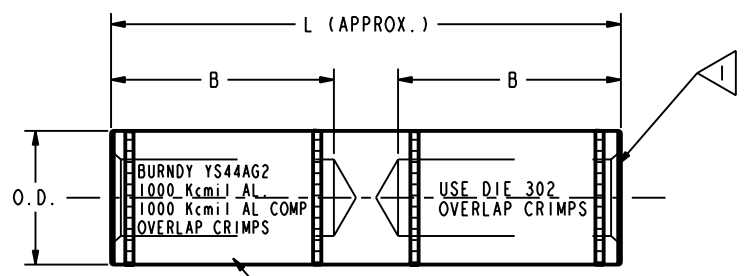


DRAWING NO.
SD64792-01

CAT. NO.	CONDUCTOR ALUM.	ITEM NO.	FIG. NO.	B	L	O.D.	DIE INDEX NO.	INSTALLATION DATA						
								DIE SET WITH NO. OF CRIMPS						
								HYTOOL			TM HYPRESS			
MD6	Y35		Y48B	Y60										
YS2WAG4	#2 SOL.	534116	2	1.58 [40]	4.04 [103]	.65 [17]	5/8-1 BG 243 8A	---	UK5/8-17	2	---	---	---	---
YS25AG2	1/0 STR 1/0 STR COMP	10035707	2	1.58 [40]	4.04 [103]	.65 [17]	3	FIXED 4 W-BG 2 W243 3	U-BG 2	---	---	---	---	
YS28AG7	4/0 STR 4/0 STR COMP	10035708	1	1.56 [40]	4.38 [111]	1.25 [32]	705 K 1 1/8 317	---	U705 UK1 1/8-17 U317	---	---	C705	---	
YS31AG8	350 kcmil 350 kcmil COMP	10035709	1	1.93 [49]	5.12 [130]	1.25 [32]	---	---	---	---	---	---	---	
YS34AG7	500 kcmil 500 kcmil COMP	10035710	1	2.19 [56]	5.72 [145]	1.50 [38]	786	---	U786	---	---	---	---	
YS39AG7	750 kcmil 750 kcmil COMP	537603	1	2.52 [64]	6.64 [169]	1.50 [38]	608	---	---	U608	4	C608	---	
YS44AG2	1000 kcmil 1000 kcmil COMP	10035711	1	2.91 [74]	7.56 [192]	1.84 [47]	302	---	---	S302	---	C302	L302	

REV.	DATE	DESCRIPTION	ECO	BY	C'H'K.
A1	05/03 12:38:50	REWORK AND REMOVE DO NOT CRIMP BETWEEN LINES	8943	RLB	PRL



NOTES:

- 1 BARRELS PARTIALLY FILLED WITH PENETROX™ AND SEALED. PENETROX IS COMPATIBLE WITH THE CABLE INSULATION.
- 2 OVERLAP CRIMPS.
- 3 MULTIPLE CRIMP DIE SET, MAKES MORE THAN ONE CRIMP PER TOOL COMPRESSION.
- 4 U' DIES CAN BE USED WITH Y45L USING 'U' DIE ADAPTOR.
5. DIMENSIONS IN BRACKETS [] ARE IN MILLIMETERS ROUNDED OFF TO THE NEAREST MILLIMETER, UNLESS OTHERWISE NOTED, AND ARE FOR REFERENCE ONLY.

TO ORDER BURNDY PRODUCTS CALL 1-800-348-4175
MANCHESTER, NH 03109, USA
FOR PRODUCT INFO = <http://www.burndy.com>

HYLINK™ ALUM.

ITEM NO: (TABLE)

CAT NO: YS-AG- (TABLE)

SCALE: 1:1
DRAWN BY: TEM 11/05/03 12:38:50
CHECKER: MAP 11/05/03 12:38:50
DSN APPVL: WF 11/05/03 12:38:50
MFG APPVL: N/A 11/05/03 12:38:50
QC APPVL: -- 11/05/03 12:38:50
MKT APPVL: -- 11/05/03 12:38:50

BURNDY

PROJECT#	SIZE	DRAWING NO	REV
DOCUMENT TYPE: Sales	D	SD64792-01	A
REL LEVEL: Released		SHEET 1 OF 1	

REV: PE0200