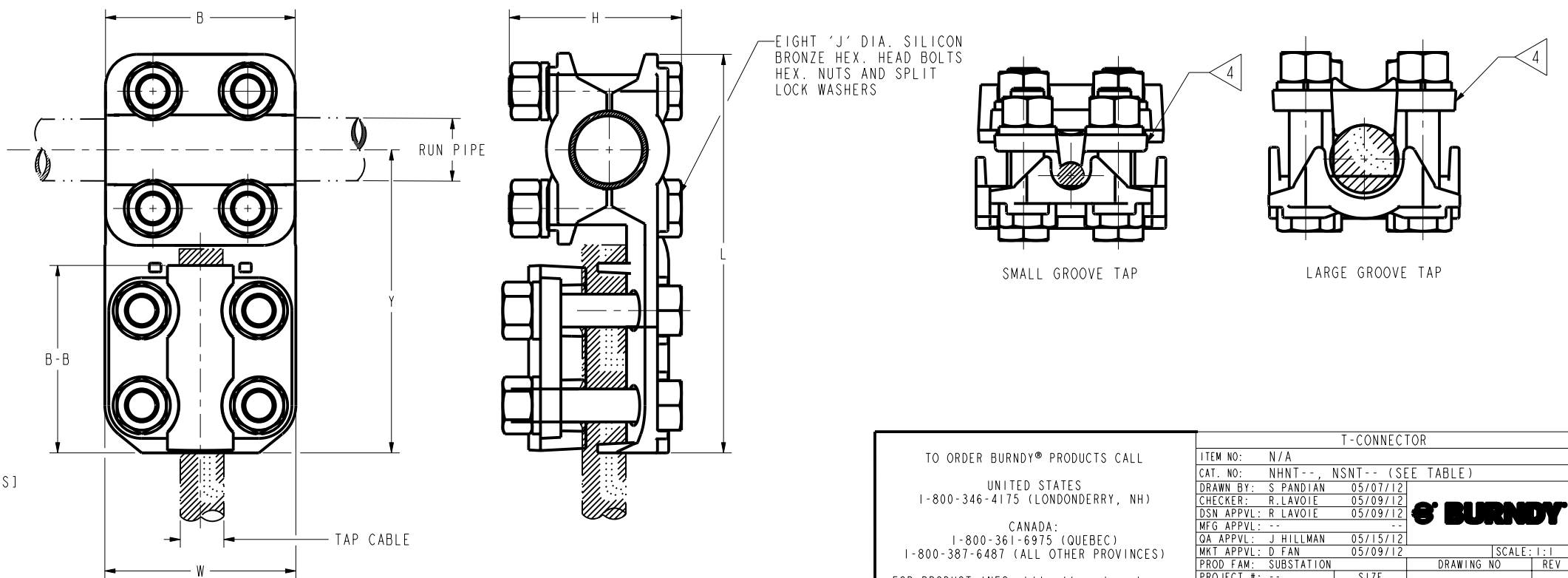


REV	DATE	DESCRIPTION	ECO	BY	C'H'K.
C	05/04/2012 00:00:00 AM	ADD THE NHNT1540 TO SALES DRAWING SE087856.	27444	SP	NJS

CATALOG NUMBER	RUN IPS OR EHPS	COMMERCIAL COPPER CABLE RANGE			METRIC COPPER CABLE RANGE			B	B-B	H	'J' DIA.	L	W	Y
		COMPLETE TAB CABLE RANGE	SMALL TAP GROOVE	LARGE TAP GROOVE	COMPLETE TAB CABLE RANGE	SMALL TAP GROOVE	LARGE TAP GROOVE							
NSNT1429	3/4" (.1050 DIA.)	6 SOL (.162 DIA.) TO 250 Kcmil (.575 DIA.)	6 SOL (.162 DIA.) TO 1/0 STR (.372 DIA.)	2/0 STR (.420 DIA.) TO 250 Kcmil (.575 DIA.)	10mm ² (4.12mm DIA) TO 120mm ² (14.40mm DIA.)	10mm ² (4.12mm DIA) TO 50mm ² (9.27mm DIA.)	70mm ² (10.92mm DIA) TO 120mm ² (14.40mm DIA.)	2.00 [51]	2.38 [61]	2.00 [51]	3/8"-16	5.08 [129]	1.96 [50]	3.89 [99]
NHNT1429								2.25 [57]	2.62 [67]	2.32 [59]	1/2"-13	5.82 [148]	2.44 [62]	4.38 [111]
NSNT1434		1/0 SOL (.325 DIA.) TO 500 Kcmil (.813 DIA.)	1/0 SOL (.325 DIA.) TO 4/0 STR (.529 DIA.)	250 Kcmil (.575 DIA.) TO 500 Kcmil (.813 DIA.)	50mm ² (9.27mm DIA) TO 240mm ² (20.35mm DIA.)	50mm ² (9.27mm DIA) TO 95mm ² (12.80mm DIA.)	120mm ² (14.40mm DIA) TO 240mm ² (20.35mm DIA.)	2.00 [51]	2.38 [61]	2.10 [53]	3/8"-16	5.08 [129]	2.20 [56]	3.89 [99]
NHNT1434								2.25 [57]	2.62 [67]	2.42 [62]	1/2"-13	5.82 [148]	2.56 [65]	4.38 [111]
NSNT1529	1" (.1315 DIA.)	6 SOL (.162 DIA.) TO 250 Kcmil (.575 DIA.)	6 SOL (.162 DIA.) TO 1/0 STR (.372 DIA.)	2/0 STR (.420 DIA.) TO 250 Kcmil (.575 DIA.)	10mm ² (4.12mm DIA) TO 120mm ² (14.40mm DIA.)	10mm ² (4.12mm DIA) TO 50mm ² (9.27mm DIA.)	70mm ² (10.92mm DIA) TO 120mm ² (14.40mm DIA.)	2.00 [51]	2.38 [61]	2.00 [51]	3/8"-16	5.34 [136]	1.96 [50]	4.02 [102]
NHNT1529													2.44 [62]	
NHNT1534		1/0 SOL (.325 DIA.) TO 500 Kcmil (.813 DIA.)	1/0 SOL (.325 DIA.) TO 4/0 STR (.529 DIA.)	250 Kcmil (.575 DIA.) TO 500 Kcmil (.813 DIA.)	50mm ² (9.27mm DIA) TO 240mm ² (20.35mm DIA.)	50mm ² (9.27mm DIA) TO 95mm ² (12.80mm DIA.)	120mm ² (14.40mm DIA) TO 240mm ² (20.35mm DIA.)	2.25 [57]	2.62 [67]	2.57 [65]	1/2"-13	5.92 [150]	2.56 [65]	4.43 [113]
NSNT1540		2/0 STR (.420 DIA.) TO 800 Kcmil (1.031 DIA.)	2/0 STR (.420 DIA.) TO 500 Kcmil (.813 DIA.)	500 Kcmil (.813 DIA.) TO 800 Kcmil (1.031 DIA.)	70mm ² (10.92mm DIA) TO 400mm ² (26.10mm DIA.)	70mm ² (10.92mm DIA) TO 240mm ² (20.35mm DIA.)	240mm ² (20.35mm DIA) TO 400mm ² (26.10mm DIA.)	2.00 [51]	2.50 [64]	2.35 [60]	3/8"-16	5.52 [140]	2.78 [71]	4.20 [107]
NHNT1540								2.25 [57]	2.56 [65]	2.60 [66]	1/2"-13	5.92 [150]		4.43 [113]
NHNT1629														
NSNT1629	1/4" (.1660 DIA.)	6 SOL (.162 DIA.) TO 250 Kcmil (.575 DIA.)	6 SOL (.162 DIA.) TO 1/0 STR (.372 DIA.)	2/0 STR (.420 DIA.) TO 250 Kcmil (.575 DIA.)	10mm ² (4.12mm DIA) TO 120mm ² (14.40mm DIA.)	10mm ² (4.12mm DIA) TO 50mm ² (9.27mm DIA.)	70mm ² (10.92mm DIA) TO 120mm ² (14.40mm DIA.)	2.00 [51]	2.38 [61]	2.37 [60]	3/8"-16	5.78 [147]	1.96 [50]	4.24 [108]
NHNT1629													2.44 [62]	
NHNT1634		1/0 SOL (.325 DIA.) TO 500 Kcmil (.813 DIA.)	1/0 SOL (.325 DIA.) TO 4/0 STR (.529 DIA.)	250 Kcmil (.575 DIA.) TO 500 Kcmil (.813 DIA.)	50mm ² (9.27mm DIA) TO 240mm ² (20.35mm DIA.)	50mm ² (9.27mm DIA) TO 95mm ² (12.80mm DIA.)	120mm ² (14.40mm DIA) TO 240mm ² (20.35mm DIA.)	2.69 [68]	2.62 [66]	2.60 [66]	1/2"-13	6.32 [161]	2.56 [65]	4.63 [118]
NHNT1640		2/0 STR (.420 DIA.) TO 800 Kcmil (1.031 DIA.)	2/0 STR (.420 DIA.) TO 500 Kcmil (.813 DIA.)	500 Kcmil (.813 DIA.) TO 800 Kcmil (1.031 DIA.)	70mm ² (10.92mm DIA) TO 400mm ² (26.10mm DIA.)	70mm ² (10.92mm DIA) TO 240mm ² (20.35mm DIA.)	240mm ² (20.35mm DIA) TO 400mm ² (26.10mm DIA.)			2.68 [68]			2.78 [71]	
NHNT1644		4/0 STR (.529 DIA.) TO 1000 Kcmil (1.152 DIA.)	4/0 STR (.529 DIA.) TO 750 Kcmil (.998 DIA.)	750 Kcmil (.998 DIA.) TO 1000 Kcmil (1.152 DIA.)	95mm ² (12.80mm DIA.) TO 500mm ² (29.30mm DIA.)	95mm ² (12.80mm DIA) TO 400mm ² (26.10mm DIA.)	400mm ² (26.10mm DIA.) TO 500mm ² (29.30mm DIA.)	2.88 [73]	2.69 [68]			6.58 [167]	2.90 [74]	4.89 [124]



NOTES:

- MATERIAL: CAST COPPER ALLOY.
- ACCOMMODATES: RUN: SEE TABLE
TAP: SEE TABLE
- DIMENSIONS IN BRACKET [] DENOTES METRIC UNITS [SI UNITS] AND ARE ROUNDED TO THE NEAREST WHOLE NUMBER UNLESS OTHERWISE SPECIFIED THESE UNITS SHALL BE USED FOR REFERENCE ONLY.

4 COMPLETE CABLE RANGE MAY BE ACCOMMODATED BY REVERSING CAP.

TO ORDER BURNDY® PRODUCTS CALL		T-CONNECTOR	
UNITED STATES 1-800-346-4175 (LONDONDERRY, NH)		ITEM NO: N/A	CAT. NO: NHNT--, NSNT-- (SEE TABLE)
CANADA: 1-800-361-6975 (QUEBEC) 1-800-387-6487 (ALL OTHER PROVINCES)		DRAWN BY: S PANDIAN 05/07/12	CHECKER: R LAVOIE 05/09/12
FOR PRODUCT INFO: http://www.burndy.com		DSN APPVL: R LAVOIE 05/09/12	MFG APPVL: --
		QA APPVL: J HILLMAN 05/15/12	MKT APPVL: D FAN 05/09/12
		PROJ #:	SCALE: 1:1
		SIZE: D	DRAWING NO: SE087856-01
		DOCUMENT TYPE: Sales	SHEET 1 OF 2
		REL LEVEL: Released	REV: C

REV: PE0200

REV	DATE	DESCRIPTION	ECO	BY	C'H'K.
C	05/04/2012 00:00:00 AM	ADD THE NHNT1540 TO SALES DRAWING SE087856.	27444	SP	NJS

CATALOG NUMBER	RUN IPS OR EHPS	COMMERCIAL COPPER CABLE RANGE			METRIC COPPER CABLE RANGE			B	B-B	H	'J' DIA.	L	W	Y	
		COMPLETE TAB CABLE RANGE	SMALL TAP GROOVE	LARGE TAP GROOVE	COMPLETE TAB CABLE RANGE	SMALL TAP GROOVE	LARGE TAP GROOVE								
NHNT1729	1 1/2" (1.900 DIA.)	6 SOL (.162 DIA.) TO 250 Kcmil (.575 DIA.)	6 SOL (.162 DIA.) TO 1/0 STR (.372 DIA.)	2/0 STR (.420 DIA.) TO 250 Kcmil (.575 DIA.)	10mm ² (4.12mm DIA) TO 120mm ² (14.40mm DIA.)	10mm ² (4.12mm DIA) TO 50mm ² (9.27mm DIA.)	70mm ² (10.92mm DIA) TO 120mm ² (14.40mm DIA.)	2.69 [68]	2.62 [66]	2.70 [69]	1/2"-13	6.76 [172]	2.44 [62]	2.56 [65]	4.85 [123]
NHNT1734		1/0 SOL (.325 DIA.) TO 500 Kcmil (.813 DIA.)	1/0 SOL (.325 DIA.) TO 4/0 STR (.529 DIA.)	250 Kcmil (.575 DIA.) TO 500 Kcmil (.813 DIA.)	50mm ² (9.27mm DIA) TO 240mm ² (20.35mm DIA.)	50mm ² (9.27mm DIA) TO 95mm ² (12.80mm DIA.)	120mm ² (14.40mm DIA) TO 240mm ² (20.35mm DIA.)								
NHNT1740		2/0 STR (.420 DIA.) TO 800 Kcmil (1.031 DIA.)	2/0 STR (.420 DIA.) TO 500 Kcmil (.813 DIA.)	500 Kcmil (.813 DIA.) TO 800 Kcmil (1.031 DIA.)	70mm ² (10.92mm DIA) TO 400mm ² (26.10mm DIA.)	70mm ² (10.92mm DIA) TO 240mm ² (20.35mm DIA.)	240mm ² (20.35mm DIA) TO 400mm ² (26.10mm DIA.)								
NHNT1744		4/0 STR (.529 DIA.) TO 1000 Kcmil (1.152 DIA.)	4/0 STR (.529 DIA.) TO 750 Kcmil (.998 DIA.)	750 Kcmil (.998 DIA.) TO 1000 Kcmil (1.152 DIA.)	95mm ² (12.80mm DIA) TO 500mm ² (29.30mm DIA)	95mm ² (12.80mm DIA) TO 400mm ² (26.10mm DIA.)	400mm ² (26.10mm DIA) TO 500mm ² (29.30mm DIA)								
NHNT1829	2" (2.375 DIA.)	6 SOL (.162 DIA.) TO 250 Kcmil (.575 DIA.)	6 SOL (.162 DIA.) TO 1/0 STR (.372 DIA.)	2/0 STR (.420 DIA.) TO 250 Kcmil (.575 DIA.)	10mm ² (4.12mm DIA) TO 120mm ² (14.40mm DIA.)	10mm ² (4.12mm DIA) TO 50mm ² (9.27mm DIA.)	70mm ² (10.92mm DIA) TO 120mm ² (14.40mm DIA.)	2.69 [68]	2.62 [66]	3.06 [78]	1/2"-13	7.44 [189]	2.44 [62]	2.56 [65]	5.19 [132]
NHNT1834		1/0 SOL (.325 DIA.) TO 500 Kcmil (.813 DIA.)	1/0 SOL (.325 DIA.) TO 4/0 STR (.529 DIA.)	250 Kcmil (.575 DIA.) TO 500 Kcmil (.813 DIA.)	50mm ² (9.27mm DIA) TO 240mm ² (20.35mm DIA.)	50mm ² (9.27mm DIA) TO 95mm ² (12.80mm DIA.)	120mm ² (14.40mm DIA) TO 240mm ² (20.35mm DIA.)								
NHNT1840		2/0 STR (.420 DIA.) TO 800 Kcmil (1.031 DIA.)	2/0 STR (.420 DIA.) TO 500 Kcmil (.813 DIA.)	500 Kcmil (.813 DIA.) TO 800 Kcmil (1.031 DIA.)	50mm ² (9.27mm DIA) TO 240mm ² (20.35mm DIA.)	50mm ² (9.27mm DIA) TO 95mm ² (12.80mm DIA.)	240mm ² (20.35mm DIA) TO 400mm ² (26.10mm DIA.)								
NHNT1844		4/0 STR (.529 DIA.) TO 1000 Kcmil (1.152 DIA.)	4/0 STR (.529 DIA.) TO 750 Kcmil (.998 DIA.)	750 Kcmil (.998 DIA.) TO 1000 Kcmil (1.152 DIA.)	95mm ² (12.80mm DIA) TO 500mm ² (29.30mm DIA)	95mm ² (12.80mm DIA) TO 400mm ² (26.10mm DIA.)	400mm ² (26.10mm DIA) TO 500mm ² (29.30mm DIA)								
NHNT1846		1000 Kcmil (1.152 DIA.) TO 1500 Kcmil (1.412 DIA.)	-----	1000 Kcmil (1.152 DIA.) TO 1500 Kcmil (1.412 DIA.)	500mm ² (29.30mm DIA) TO 800mm ² (36.90mm DIA.)	-----	500mm ² (29.30mm DIA) TO 800mm ² (36.90mm DIA.)								
NHNT1929	2 1/2" (2.875 DIA.)	6 SOL (.162 DIA.) TO 250 Kcmil (.575 DIA.)	6 SOL (.162 DIA.) TO 1/0 STR (.372 DIA.)	2/0 STR (.420 DIA.) TO 250 Kcmil (.575 DIA.)	10mm ² (4.12mm DIA) TO 120mm ² (14.40mm DIA.)	10mm ² (4.12mm DIA) TO 50mm ² (9.27mm DIA.)	70mm ² (10.92mm DIA) TO 120mm ² (14.40mm DIA.)	2.69 [68]	2.62 [67]	3.64 [93]	1/2"-13	8.06 [205]	2.44 [62]	2.56 [65]	5.50 [140]
NHNT1934		1/0 SOL (.325 DIA.) TO 500 Kcmil (.813 DIA.)	1/0 SOL (.325 DIA.) TO 4/0 STR (.529 DIA.)	250 Kcmil (.575 DIA.) TO 500 Kcmil (.813 DIA.)	50mm ² (9.27mm DIA) TO 240mm ² (20.35mm DIA.)	50mm ² (9.27mm DIA) TO 95mm ² (12.80mm DIA.)	120mm ² (14.40mm DIA) TO 240mm ² (20.35mm DIA.)								
NHNT1940		2/0 STR (.420 DIA.) TO 800 Kcmil (1.031 DIA.)	2/0 STR (.420 DIA.) TO 500 Kcmil (.813 DIA.)	500 Kcmil (.813 DIA.) TO 800 Kcmil (1.031 DIA.)	50mm ² (9.27mm DIA) TO 240mm ² (20.35mm DIA.)	50mm ² (9.27mm DIA) TO 95mm ² (12.80mm DIA.)	240mm ² (20.35mm DIA) TO 400mm ² (26.10mm DIA.)								
NHNT1944		4/0 STR (.529 DIA.) TO 1000 Kcmil (1.152 DIA.)	4/0 STR (.529 DIA.) TO 750 Kcmil (.998 DIA.)	750 Kcmil (.998 DIA.) TO 1000 Kcmil (1.152 DIA.)	95mm ² (12.80mm DIA) TO 500mm ² (29.30mm DIA)	95mm ² (12.80mm DIA) TO 400mm ² (26.10mm DIA.)	400mm ² (26.10mm DIA) TO 500mm ² (29.30mm DIA)								
NHNT1946		1000 Kcmil (1.152 DIA.) TO 1500 Kcmil (1.412 DIA.)	-----	1000 Kcmil (1.152 DIA.) TO 1500 Kcmil (1.412 DIA.)	500mm ² (29.30mm DIA) TO 800mm ² (36.90mm DIA.)	-----	500mm ² (29.30mm DIA) TO 800mm ² (36.90mm DIA.)								

REV: PE0200

TO ORDER BURNDY® PRODUCTS CALL UNITED STATES 1-800-346-4175 (LONDONDERRY, NH) CANADA: 1-800-361-6975 (QUEBEC) 1-800-387-6487 (ALL OTHER PROVINCES) FOR PRODUCT INFO: http://www.burndy.com	T-CONNECTOR	
	ITEM NO:	N/A
	CAT. NO:	NHNT--, NSNT-- (SEE TABLE)
	DRAWN BY:	S PANDIAN 05/07/12
	CHECKER:	R LAVOIE 05/09/12
	DSN APPVL:	R LAVOIE 05/09/12
	MFG APPVL:	-- --
	QA APPVL:	J HILLMAN 05/15/12
	MKT APPVL:	D FAN 05/09/12
	PROJ #:	---
SIZE:	D	
SCALE:	1:1	
DRAWING NO:	SE087856-01	
REV:	C	
SHEET:	2 OF 2	

