
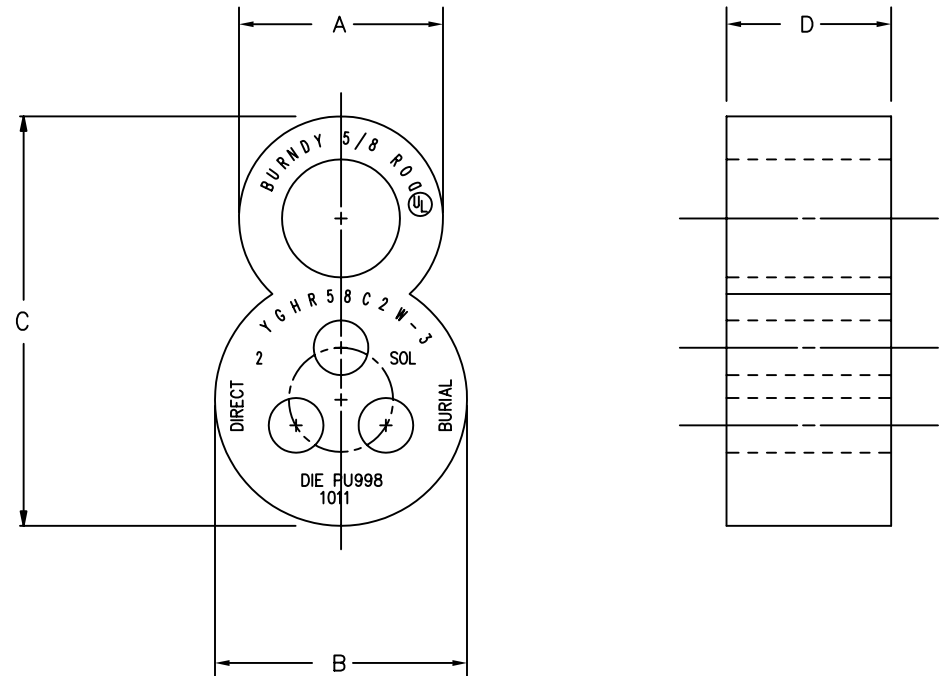


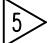
DRAWING NO.  
**SE207005**

CATALOG NUMBER	GROUND ROD DIAMETER	TAP CONDUCTORS	INSTALLATION TOOLING				DIE INDEX	DIMENSIONS			
			Y35/Y750		Y46 			A	B	C	D
			DIE NO.	NO. OF CRIMPS	DIE NO.	NO. OF CRIMPS					
YGHR58C2W-3	5/8" [15.9]	#2 SOL. [6.5mm DIA] 1,2 OR 3 MAY BE CONNECTED	PU998	(1)	PU998	(1)	998 OR 1011	1.09 [27.7]	1.34 [34.0]	2.19 [55.6]	.88 [22.4]
					U1011	(2)					
			U1011	(2)	P998	(1)					
					P1011	(2)					

REV.	DATE	DESCRIPTION	ECO	BY	C'K'D.
1	9/21/93	ADDED NOTE 10 AND METRIC DIMENSIONS FOUND IN TABLE	1346	RER	KW



**NOTES:**

- MATERIAL: HIGH CONDUCTIVITY COPPER.
- GROOVES ARE FILLED WITH PENETROX™ AND INDIVIDUALLY SEALED IN CLEAR POLYETHYLENE SHEET.
- THE CATALOG NUMBER SHOWN IS FOR UNPLATED COPPER CONNECTORS FOR USE ON COPPER CLAD OR STAINLESS STEEL GROUND ROD. TO ORDER ELECTRO-TIN CONNECTORS FOR USE ON GALVANIZED STEEL GROUND ROD ADD SUFFIX "TN" TO THE CATALOG NUMBER. NOTE: THE GROUND ROD DIAMETER IS LARGER FOR GALVANIZED STEEL GROUND ROD IN THE TIN PLATED CONNECTOR.
- GROUND ROD MUST BE PRE-CRIMPED WITH DIE U2CABT (INDEX NO. 348) OR UPRECRIMP58 WHEN THE PU998 OR U1011 DIES ARE USED IN THE Y35, Y750 OR Y46 TOOLS.
-  WHERE A PU998 OR U1011 DIE IS RECOMMENDED WITH THE Y46 HYPRESS, A P-UADP ADAPTER MUST BE USED.
- THE DIE INDEX NUMBER IS EMBOSSED ON THE CONNECTOR AFTER COMPLETION OF CRIMP.
- TAP SIDE ACCEPTS 1, 2, OR 3 CONDUCTORS. UNUSED TAP LOCATIONS MAY REMAIN VACANT.
- UL467 LISTED
- SUITABLE FOR DIRECT BURIAL IN EARTH OR CONCRETE.
- REV: 061995

TO ORDER BURNDY® PRODUCTS CALL  
 UNITED STATES:  
 1-800-346-4175 (LONDONDERRY, NH)  
 CANADA:  
 1-800-361-6975 (QUEBEC)  
 1-800-387-6487 (ALL OTHER PROVINCES)  
 FOR PRODUCT INFO: <http://www.burndy.com>

TO ORDER BURNDY PRODUCTS CALL 1-800-346-4175  
 MANCHESTER, NH 03109, USA  
 FOR PRODUCT INFO = <http://www.fciconnect.com>

**COMPRESSION GROUND TAP CONNECTOR**

ITEM NO: N/A  
 CAT NO: YGHR58C2W-3

SCALE: FULL	
DRAWN BY: J GAUDET	5/13/91
CHECKER: KH	5/13/91
DSN APPVL: GS	5/13/91
MFG APPVL: BK	5/13/91
QC APPVL: AL	5/13/91
MKT APPVL: --	--
PROD FAM: --	--
PROJECT #: --	SIZE
DOCUMENT TYPE: Sales	D
REL LEVEL: AutoCAD	

**BURNDY**

DRAWING NO	REV
SE207005	1
SHEET 1 OF 1	