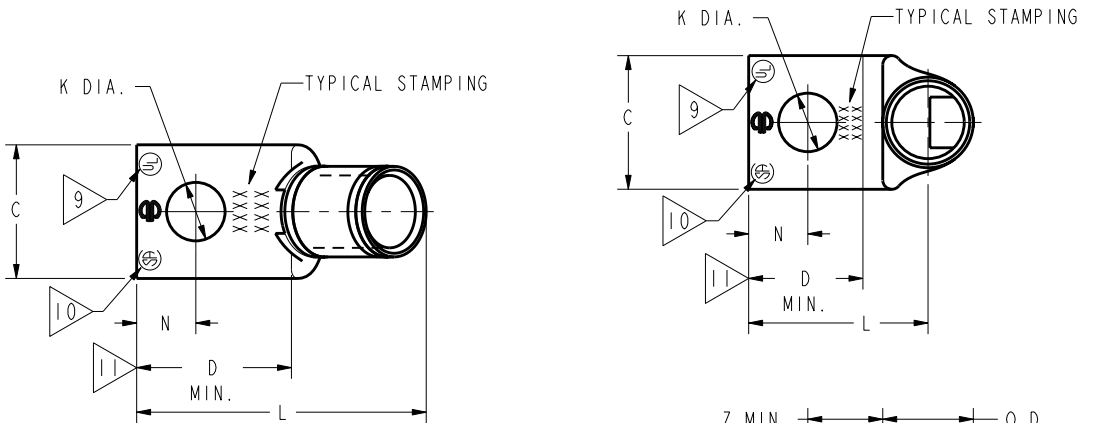


DRAWING NO. SE209240		7		6		5		4		3		2		1					
CATALOG NUMBER	STRANDED COPPER CONDUCTOR ACCOMMODATED			BOLT SIZE	METRIC BOLT SIZE	FIG. NO.	DIMENSIONS							REV	DATE	DESCRIPTION	ECO	BY	C'H'K.
	CODE (AWG)	NAVY	METRIC SIZE (CLASS 2)				B	C	H REF.	K DIA.	L	N	O.D.	T REF.	Z MIN.	B	11/04/2011 09:30:00 AM	UPDATED TOOLING DETAILS AS PER MU	25809
YA26L645	2/0 AWG	125	70mm <sup>2</sup> STR [11]	1/2	M12	1	.94 [24]	.83 [21]	1.38 [35]	.53 [13]	2.28 [58]	.53 [13]	.56 [14]	.12 [3]	.55 [14]				
2						.83 [21]	1.56 [40]	.53 [13]	1.46 [37]	.53 [13]	.12 [3]	.55 [14]							
YA26L745				5/8	M16	1	.90 [23]	1.38 [35]	.69 [18]	2.50 [64]	.66 [17]	.11 [3]	.67 [17]						
2						.90 [23]	1.53 [39]	.69 [18]	1.71 [43]	.66 [17]	.11 [3]	.67 [17]							
YA26L6045				3/4	-----	1	1.02 [26]	1.43 [36]	.81 [21]	2.77 [70]	.75 [19]	.10 [3]	.77 [20]						
2						1.02 [26]	1.59 [40]	.81 [21]	1.89 [48]	.75 [19]	.10 [3]	.77 [20]							

CONNECTOR SIZE	TOLERANCES					
	B	C	K DIA.	L	N	O.D.
-8C THRU -25	±.06	±.04	±.02	±.09	±.03	±.01
-26 THRU -34	±.08	±.04	±.02	±.12	±.03	±.01
-35 AND UP	±.09	±.06	±.02	±.15	±.06	±.01

TOLERANCE BLOCK

INSTALLATION TOOLING (# CRIMPS)																
CATALOG NO.	COLOR CODE	DIE INFORMATION		MECHANICAL RATCHET				HYDRAULIC					DIELESS (# CRIMPS)	WIRE STRIP LENGTH		
		DIE INDEX	TYPE	6 YIMRTC	OUR840	MD6 MD7	MD6--R2 MD7-34R	PATMD6 PAT600	8 Y34A Y34B Y34BH	5 Y35, Y39 Y750, PAT750	5 PAT46	4 PAT46			5 Y45	Y48B
YA26L45 YA26L90	BLACK	13	BLACK DIE SET	-----	X26RT(2)	X26RT(2) W26RT(2) W26VT(2)	X26RT(2) W26RT(2) W26VT(2)	X26RT(2) W26RT(2) W26VT(2)	-----	U26RT(1)	U26RT(1)	U26RT(1)	-----	-----	MECHANICAL: MY29-3(1) MY29-11(1) MRC840(2)	1"
			NEST INDENTOR	-----	-----	-----	-----	-----	B26D(1) A26D(1)	U26D-1(1)	U26D-1(1)	U26D-1(1)	-----	-----	HYDRAULIC: Y644(1) Y81KFT(1) Y4PC834(1)	



- NOTES:
- MATERIAL : COPPER TUBING.
  - FINISH: ELECTRO-TIN PLATED.
  - CATALOG # PT6515 ADAPTOR IS REQUIRED TO USE "U" DIES IN Y45 SERIES TOOLS.
  - CATALOG # PUADP-1 ADAPTOR IS REQUIRED TO USE "U" DIES IN Y46 SERIES TOOLS.
  - Y35P3 INDENTOR ADAPTOR REQUIRED FOR Y34PR INDENTOR.
  - PERMANENT DIE IN TOOLING.
  - DIMENSIONS IN BRACKETS [ ] ARE IN MILLIMETERS ROUNDED OFF TO THE NEAREST MILLIMETER UNLESS OTHERWISE NOTED, AND ARE FOR REFERENCE ONLY.
  - FOR USE BY CUSTOMERS THAT HAVE THIS HYPRESS™. NO NEW Y34A HYPRESS™ TOOLS ARE BEING PROCESSED. Y34A USES A--D NEST DIES ONLY.
  - CONNECTORS ARE UL LISTED; UNDRILLED VERSIONS ARE NOT UL LISTED.
  - CONNECTORS ARE CSA CERTIFIED; UNDRILLED VERSIONS ARE NOT CSA CERTIFIED.
  - FOR UNDRILLED VERSIONS ADD SUFFIX "-U" TO END OF CATALOG NUMBER. FOR UNDRILLED VERSIONS, USE D MIN. = N MAX. + Z MIN.
  - "X", "W-RT", "W-VT", "U", & "L" DIE SETS ARE COLOR CODED. "A", "B", AND "C" DIES ARE NOT COLOR CODED. NESTS AND INDENTOR TYPE ARE NOT COLOR CODED.

FIG. 1

FIG. 2

REFERENCE: SD079848

TO ORDER BURNDY® PRODUCTS CALL		COPPER HYLUG™	
UNITED STATES 1-800-346-4175 (LONDONDERRY, NH)		ITEM NO: N/A	
CANADA: 1-800-361-6975 (QUEBEC) 1-800-387-6487 (ALL OTHER PROVINCES)		CAT. NO: YA26-L-- (TABLE)	
FOR PRODUCT INFO: <a href="http://www.burndy.com">http://www.burndy.com</a>		DRAWN BY: J MICHAUD 12/08/94	
		CHECKER: D FELLION 12/08/94	
		DSN APPVL: C PALAGI 12/08/94	
		MFG APPVL: --	
		QA APPVL: C ACKERMAN 12/23/94	
		MKT APPVL: T NELSON 12/15/94	
		PROD FAM: CM&R COMPRESSION	SCALE: 1:1
		PROJECT #: --	SIZE
		DOCUMENT TYPE: Sales	SE209240
		REL LEVEL: Released	SHEET 15 OF 38

REV: PE0200