

DRAWING NO. SE209240		7		6		5		4		3		2		1					
CATALOG NUMBER	STRANDED COPPER CONDUCTOR ACCOMMODATED			BOLT SIZE	METRIC BOLT SIZE	FIG. NO.	DIMENSIONS							REVI	DATE	DESCRIPTION	ECO	BY	C'H'K.
	CODE (AWG)	NAVY	METRIC SIZE (CLASS 2)				B	C	H REF.	K DIA.	L	N	O.D.	T REF.	Z MIN.	B	11/04/2011 09:30:00 AM	UPDATED TOOLING DETAILS AS PER MU	25809
YA29L45	250 Kcmil	250	120mm ² STR [14.5]	1/2	M12	1	1.06 [27]	1.11 [28]	1.70 [43]	.53 [13]	2.57 [65]	.53 [13]	.75 [19]	.16 [4]	.55 [14]				
YA29L90				2	1.86 [47]	.53 [13]	1.58 [40]	.53 [13]	.16 [4]	.55 [14]									
YA29LTC7845				1	1.69 [43]	.94 [24]	3.23 [82]	.88 [22]	.14 [4]	.89 [23]									
YA29LTC7890				2	1.06 [27]	1.11 [28]	1.83 [46]	.94 [24]	2.26 [57]	.88 [22]	.75 [19]	.14 [4]	.89 [23]						

CONNECTOR SIZE	TOLERANCES					
	B	C	K DIA.	L	N	O.D.
-8C THRU -25	±.06	±.04	±.02	±.09	±.03	±.01
-26 THRU -34	±.08	±.04	±.02	±.12	±.03	±.01
-35 AND UP	±.09	±.06	±.02	±.15	±.06	±.01

TOLERANCE BLOCK

INSTALLATION TOOLING (# CRIMPS)																	
CATALOG NO.	COLOR CODE	DIE INFORMATION		MECHANICAL RATCHET				HYDRAULIC						DIELESS (# CRIMPS)	WIRE STRIP LENGTH		
		DIE INDEX	TYPE	6 YIMRTC	OUR840	MD6 MD7	MD6--R2 MD7-34R	PATMD6 PAT600	8 Y34A Y34B Y34BH	5 Y35, Y39 Y750, PAT750	5 4 PAT46	5 3 Y45	Y48B			Y60BHU	
YA29L45	YELLOW	16	YELLOW DIE SET	-----	X29RT(4)	X29RT(4)	W29VT(2)	X29RT(4)	W29VT(2)	A29R(1)	U29RT(1)	U29RT(1)	U29RT(1)	C29R(1)	L29RT(1)	MECHANICAL: MY29-3(1) MY29-11(1)	1-1/8"
YA29L90			NEST	-----	-----	-----	-----	-----	B29D(1) A29D(1)	U29D-1(1)	U29D-1(1)	U29D-1(1)	C29D(1)	-----	HYDRAULIC: Y644(1) Y81KFT(2) Y4PC834(2)		
YA29LTC7845			INDENTOR	-----	-----	-----	-----	-----	-----	Y34PR	Y34PR	Y34PR	Y34PR	Y48PR	-----		
YA29LTC7890			-----	-----	-----	-----	-----	-----	-----	-----	-----	-----	-----	-----	-----		

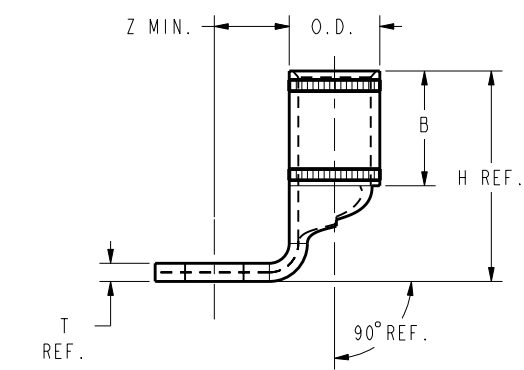
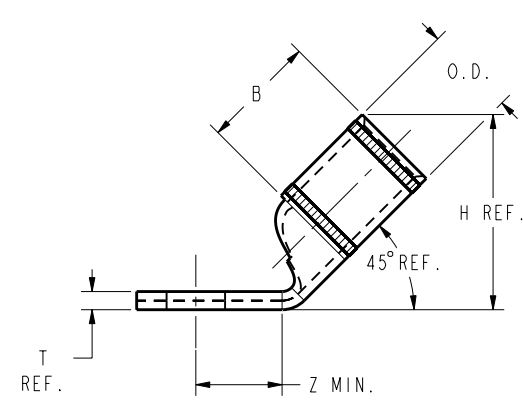
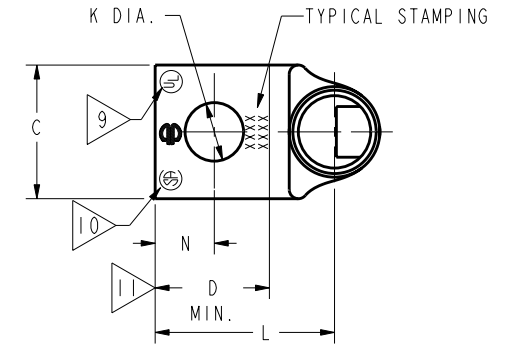
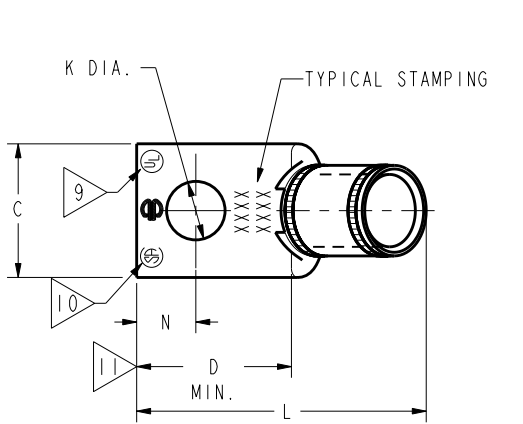


FIG. 1

FIG. 2

REFERENCE: SD079848

- NOTES:
- MATERIAL : COPPER TUBING.
 - FINISH: ELECTRO-TIN PLATED.
 - CATALOG # PT6515 ADAPTOR IS REQUIRED TO USE "U" DIES IN Y45 SERIES TOOLS.
 - CATALOG # PUADP-1 ADAPTOR IS REQUIRED TO USE "U" DIES IN Y46 SERIES TOOLS.
 - Y35P3 INDENTOR ADAPTOR REQUIRED FOR Y34PR INDENTOR.
 - PERMANENT DIE IN TOOLING.
 - DIMENSIONS IN BRACKETS [] ARE IN MILLIMETERS ROUNDED OFF TO THE NEAREST MILLIMETER, UNLESS OTHERWISE NOTED, AND ARE FOR REFERENCE ONLY.
 - FOR USE BY CUSTOMERS THAT HAVE THIS HYPRESS™. NO NEW Y34A HYPRESS™ TOOLS ARE BEING PROCESSED. Y34A USES A--D NEST DIES ONLY.
 - CONNECTORS ARE UL LISTED; UNDRILLED VERSIONS ARE NOT UL LISTED.
 - CONNECTORS ARE CSA CERTIFIED; UNDRILLED VERSIONS ARE NOT CSA CERTIFIED.
 - FOR UNDRILLED VERSIONS ADD SUFFIX "-U" TO END OF CATALOG NUMBER. FOR UNDRILLED VERSIONS, USE D MIN. = N MAX. + Z MIN.
 - "X", "W-RT", "W-VT", "U", & "L" DIE SETS ARE COLOR CODED. "A", "B", AND "C" DIES ARE NOT COLOR CODED. NESTS AND INDENTOR TYPE ARE NOT COLOR CODED.

TO ORDER BURNDY® PRODUCTS CALL		COPPER HYLUG™	
UNITED STATES 1-800-346-4175 (LONDONDERRY, NH)		ITEM NO: N/A	CAT. NO: YA29-L-- (TABLE)
CANADA: 1-800-361-6975 (QUEBEC) 1-800-387-6487 (ALL OTHER PROVINCES)		DRAWN BY: J MICHAUD 12/08/94	CHECKER: D FELLION 12/08/94
FOR PRODUCT INFO: http://www.burndy.com		DSN APPVL: C PALAGI 12/08/94	MFG APPVL: --
		QA APPVL: C ACKERMAN 12/23/94	MKT APPVL: T NELSON 12/15/94
		PROJ #: --	SCALE: 1:1
		DOCUMENT TYPE: Sales	SIZE: D
		REL LEVEL: Released	DRAWING NO: SE209240
			SHEET 21 OF 38

REV: PE0200