

DRAWING NO. SE209240	7			6		5		4		3		2		1								
	CATALOG NUMBER	STRANDED COPPER CONDUCTOR ACCOMMODATED CODE (AWG)	NAVY	METRIC SIZE (CLASS 2)	BOLT SIZE	METRIC BOLT SIZE	FIG. NO.	DIMENSIONS								REV	DATE	DESCRIPTION	ECO	BY	C'H'K.	
							B	C	H REF.	K DIA.	L	N	O.D.	T REF.	Z MIN.	B	11/04/2011 09:30:00 AM	UPDATED TOOLING DETAILS AS PER MU	25809	BT	MA	
YA31L1145	350 Kcmil	350	-----	3/8	-----	1	1.06 [27]	1.29 [33]	1.85 [47]	.40 [10]	2.42 [61]	.41 [10]	.88 [22]	.18 [5]	.42 [11]	-8C THRU -25	±.06	±.04	±.02	±.09	±.03	±.01
YA31L1190						2	1.98 [50]	.40 [10]	1.40 [36]	.41 [10]	.42 [11]											
YA31L45						1	1.85 [47]	.53 [13]	2.75 [70]	.53 [13]	.55 [14]											
YA31L90				1/2	MI2	2	1.98 [50]	.53 [13]	1.65 [42]	.53 [13]	.55 [14]											
YA31L745						1	1.85 [47]	.69 [18]	3.00 [76]	.66 [17]	.67 [17]											
YA31L790				5/8	MI6	2	1.06 [27]	1.29 [33]	1.98 [50]	.69 [18]	1.90 [48]	.66 [17]	.88 [22]	.18 [5]	.67 [17]							

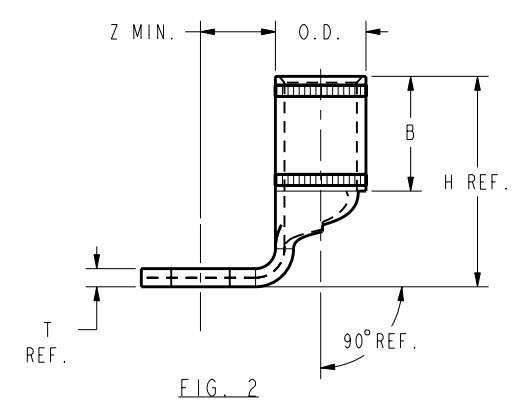
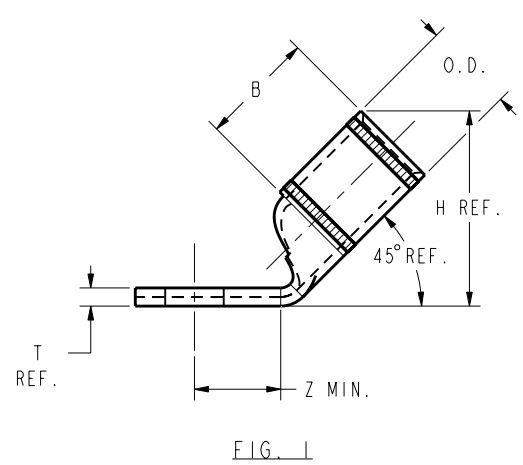
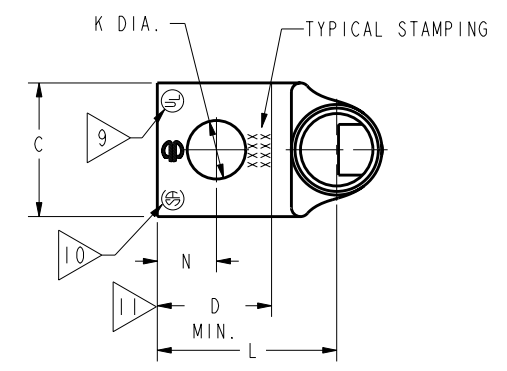
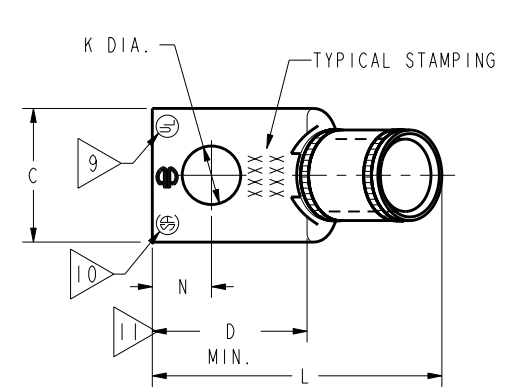
CONNECTOR SIZE	TOLERANCES					
	B	C	K DIA.	L	N	O.D.
-8C THRU -25	±.06	±.04	±.02	±.09	±.03	±.01
-26 THRU -34	±.08	±.04	±.02	±.12	±.03	±.01
-35 AND UP	±.09	±.06	±.02	±.15	±.06	±.01

TOLERANCE BLOCK

INSTALLATION TOOLING (# CRIMPS)																
CATALOG NO.	COLOR CODE	DIE INFORMATION		MECHANICAL RATCHET				HYDRAULIC						DIELESS (# CRIMPS)	WIRE STRIP LENGTH	
		DIE INDEX	TYPE	6 YIMRTC	OUR840	MD6 MD7	MD6--R2 MD7-34R	PATMD6 PAT600	8 Y34A Y34B Y34BH	5 Y35, Y39 Y750, PAT750	5 4 Y46 PAT46	5 3 Y45	Y48B			Y60BHU
YA31L45	RED	18	RED DIE SET	-----	-----	W31VT(2)	W31RT(2)	W31VT(2)	-----	U31RT(2)	U31RT(2)	U31RT(2)	C31R(2)	L31RT(1)	HYDRAULIC: Y644(1) Y81KFT(2) Y4PC834(2)	1-3/16"
YA31L90		324	NEST	-----	-----	-----	-----	B31D(1) A31D(1)	U31D-1(1)	U31D-1(1)	U31D-1(1)	C31D(1)	-----			
				INDENTOR	-----	-----	-----	-----	Y34PR	Y34PR	Y34PR	Y34PR	Y48PR	-----		

NOTES:

- MATERIAL : COPPER TUBING.
- FINISH: ELECTRO-TIN PLATED.
- CATALOG # PT6515 ADAPTOR IS REQUIRED TO USE "U" DIES IN Y45 SERIES TOOLS.
- CATALOG # PUADP-1 ADAPTOR IS REQUIRED TO USE "U" DIES IN Y46 SERIES TOOLS.
- Y35P3 INDENTOR ADAPTOR REQUIRED FOR Y34PR INDENTOR.
- PERMANENT DIE IN TOOLING.
- DIMENSIONS IN BRACKETS [] ARE IN MILLIMETERS ROUNDED OFF TO THE NEAREST MILLIMETER, UNLESS OTHERWISE NOTED, AND ARE FOR REFERENCE ONLY.
- FOR USE BY CUSTOMERS THAT HAVE THIS HYPRESS™. NO NEW Y34A HYPRESS™ TOOLS ARE BEING PROCESSED. Y34A USES A--D NEST DIES ONLY.
- CONNECTORS ARE UL LISTED; UNDRILLED VERSIONS ARE NOT UL LISTED.
- CONNECTORS ARE CSA CERTIFIED; UNDRILLED VERSIONS ARE NOT CSA CERTIFIED.
- FOR UNDRILLED VERSIONS ADD SUFFIX "-U" TO END OF CATALOG NUMBER. FOR UNDRILLED VERSIONS, USE D MIN. = N MAX. + Z MIN.
- "X", "W-RT", "W-VT", "U", & "L" DIE SETS ARE COLOR CODED. "A", "B", AND "C" DIES ARE NOT COLOR CODED. NESTS AND INDENTOR TYPE ARE NOT COLOR CODED.



REFERENCE: SD079848

TO ORDER BURNDY® PRODUCTS CALL UNITED STATES 1-800-346-4175 (LONDONDERRY, NH) CANADA: 1-800-361-6975 (QUEBEC) 1-800-387-6487 (ALL OTHER PROVINCES) FOR PRODUCT INFO: http://www.burndy.com	COPPER HYLUG™	
	ITEM NO: N/A	SCALE: 1:1
	CAT. NO: YA31-L-- (TABLE)	REV
	DRAWN BY: J MICHAUD 12/08/94	DRAWING NO
	CHECKER: D FELLION 12/08/94	SE209240
DSN APPVL: C PALAGI 12/08/94	SHEET 24 OF 38	
MFG APPVL: --		
QA APPVL: C ACKERMAN 12/23/94		
MKT APPVL: T NELSON 12/15/94		
PROD FAM: CM&R COMPRESSION		
PROJECT #: --		
DOCUMENT TYPE: Sales		
REL LEVEL: Released		

REV: PE0200