

DRAWING NO.
SE209240

CATALOG NUMBER	STRANDED COPPER CONDUCTOR ACCOMMODATED			BOLT SIZE	METRIC BOLT SIZE	FIG. NO.	DIMENSIONS								
	CODE (AWG)	NAVY	METRIC SIZE (CLASS 2)				B	C	H REF.	K DIA.	L	N	O.D.	T REF.	Z MIN.
YA32LTC7845	400 Kcmil	400	-----	7/8	-----	1	1.19 [30]	1.40 [36]	2.03 [52]	.94 [24]	3.52 [89]	.88 [22]	.95 [24]	.19 [5]	.89 [23]
YA32LTC7890						2	1.19 [30]	1.40 [36]	2.19 [56]	.94 [24]	2.38 [60]	.88 [22]	.95 [24]	.19 [5]	.89 [23]
YA33L45	450 Kcmil	-----	-----	5/8	M16	1	1.50 [38]	1.48 [38]	2.35 [60]	.69 [18]	3.30 [84]	.67 [17]	1.01 [26]	.21 [5]	.67 [17]
YA33L90						2	1.50 [38]	1.48 [38]	2.60 [66]	.69 [18]	2.00 [51]	.67 [17]	1.01 [26]	.21 [5]	.67 [17]

REV	DATE	DESCRIPTION	ECO	BY	C'H'K.
B	11/04/2011 09:30:00 AM	UPDATED TOOLING DETAILS AS PER MU	25809	BT	MA

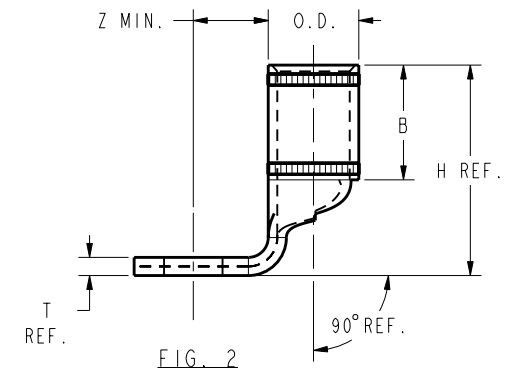
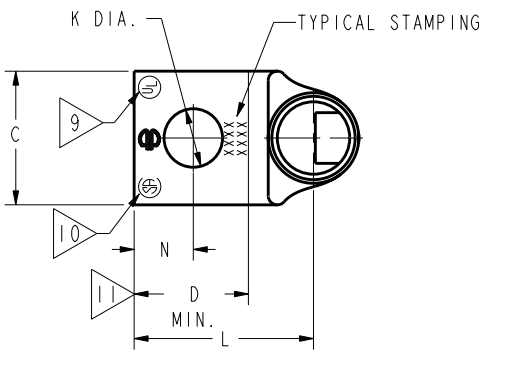
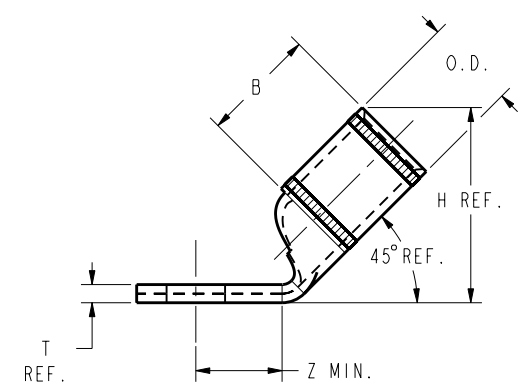
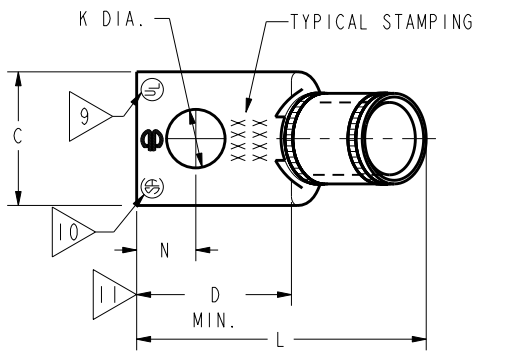
CONNECTOR SIZE	TOLERANCES					
	B	C	K DIA.	L	N	O.D.
-8C THRU -25	±.06	±.04	±.02	±.09	±.03	±.01
-26 THRU -34	±.08	±.04	±.02	±.12	±.03	±.01
-35 AND UP	±.09	±.06	±.02	±.15	±.06	±.01

TOLERANCE BLOCK

CATALOG NO.	COLOR CODE	DIE INFORMATION		MECHANICAL RATCHET					HYDRAULIC					DIELESS (# CRIMPS)	WIRE STRIP LENGTH	
		DIE INDEX	TYPE	6 YIMRTC	OUR840	MD6 MD7	MD6--R2 MD7-34R	PATMD6 PAT600	8 Y34A Y34B Y34BH	5 Y35, Y39 Y750, PAT750	5 4 Y46 PAT46	5 3 Y45	Y48B			Y60BHU
YA32LTC7845	BLUE	19 470	BLUE DIE SET	-----	-----	W32VT(2)	W32RT(2) W32VT(2)	W32RT(2) W32VT(2)	-----	U32RT(2) U30ART(2)	U32RT(2) U30ART(2)	U32RT(2) U30ART(2)	C32R(1) C30AR(1)	L32RT(1) L30ART(1)	HYDRAULIC: Y644(1) Y81KFT(2) Y4PC834(2)	1-1/4"
YA32LTC7890			NEST	-----	-----	-----	-----	B32D(1) A32D(1)	U32D-1(1)	U32D-1(1)	U32D-1(1)	C32D(1)	-----			
			INDENTOR	-----	-----	-----	-----	Y34PR	Y34PR	Y34PR	Y34PR	Y48PR	-----			
YA33L45	GRAY	326 538	GRAY DIE SET	-----	-----	W33VT(2)	W33RT(2) W33VT(2)	W33RT(2) W33VT(2)	-----	U33RT(2)	U33RT(2)	U33RT(2)	-----	L33RT(1)	HYDRAULIC: Y644(1) Y81KFT(2) Y4PC834(2)	1-9/16"
YA33L90			NEST	-----	-----	-----	-----	B33D(1) A33D(1)	U33D-1(1)	U33D-1(1)	U33D-1(1)	C33D(1)	-----			
			INDENTOR	-----	-----	-----	-----	Y34PR	Y34PR	Y34PR	Y34PR	Y48PR	-----			

NOTES:

- MATERIAL : COPPER TUBING.
- FINISH: ELECTRO-TIN PLATED.
- CATALOG # PT6515 ADAPTOR IS REQUIRED TO USE "U" DIES IN Y45 SERIES TOOLS.
- CATALOG # PUADP-1 ADAPTOR IS REQUIRED TO USE "U" DIES IN Y46 SERIES TOOLS.
- Y35P3 INDENTOR ADAPTOR REQUIRED FOR Y34PR INDENTOR.
- PERMANENT DIE IN TOOLING.
- DIMENSIONS IN BRACKETS [] ARE IN MILLIMETERS ROUNDED OFF TO THE NEAREST MILLIMETER, UNLESS OTHERWISE NOTED, AND ARE FOR REFERENCE ONLY.
- FOR USE BY CUSTOMERS THAT HAVE THIS HYPRESS™. NO NEW Y34A HYPRESS™ TOOLS ARE BEING PROCESSED. Y34A USES A--D NEST DIES ONLY.
- CONNECTORS ARE UL LISTED; UNDRILLED VERSIONS ARE NOT UL LISTED.
- CONNECTORS ARE CSA CERTIFIED; UNDRILLED VERSIONS ARE NOT CSA CERTIFIED.
- FOR UNDRILLED VERSIONS ADD SUFFIX "-U" TO END OF CATALOG NUMBER. FOR UNDRILLED VERSIONS, USE D MIN. = N MAX. + Z MIN.
- "X", "W-RT", "W-VT", "U", & "L" DIE SETS ARE COLOR CODED. "A", "B", AND "C" DIES ARE NOT COLOR CODED. NESTS AND INDENTOR TYPE ARE NOT COLOR CODED.



REFERENCE: SD079848

TO ORDER BURNDY® PRODUCTS CALL		COPPER HYLUG™	
UNITED STATES 1-800-346-4175 (LONDONDERRY, NH)		ITEM NO: N/A	SCALE: 1:1
CANADA: 1-800-361-6975 (QUEBEC) 1-800-387-6487 (ALL OTHER PROVINCES)		CAT. NO: YA3-L-- (TABLE)	REV
FOR PRODUCT INFO: http://www.burndy.com		DRAWN BY: J MICHAUD 12/08/94	SE209240
		CHECKER: D FELLION 12/08/94	B
		DSN APPVL: C PALAGI 12/08/94	SHEET 27 OF 38
		MFG APPVL: -- --	
		QA APPVL: C ACKERMAN 12/23/94	
		MKT APPVL: T NELSON 12/15/94	
		PROJ #: --	
		DOCUMENT TYPE: Sales	
		REL LEVEL: Released	

REV: PE0200