

DRAWING NO.
SE209240

CATALOG NUMBER	STRANDED COPPER CONDUCTOR ACCOMMODATED			BOLT SIZE	METRIC BOLT SIZE	FIG. NO.	DIMENSIONS								
	CODE (AWG)	NAVY	METRIC SIZE (CLASS 2)				B	C	H REF.	K DIA.	L	N	O.D.	T REF.	Z MIN.
YA35L45	550 Kcmil	-----	-----	5/8	M16	1	1.69 [43]	1.65 [42]	2.62 [67]	.69 [18]	3.67 [93]	.66 [17]	1.13 [29]	.25 [6]	.67 [17]
YA35L90						2	1.69 [43]	1.65 [42]	2.92 [74]	↑	2.08 [53]	↑	1.13 [29]	.25 [6]	↑
YA36L45	600 Kcmil	-----	300mm ² STR [23.1]			1	1.38 [35]	1.74 [44]	2.48 [63]	↓	3.49 [89]	↓	1.19 [30]	.27 [7]	↓
YA36L90						2	1.38 [35]	↑	2.11 [54]	.66 [17]	1.19 [30]	↑	.67 [17]		
YA36LTC7845				7/8	-----	1	1.38 [35]	↓	2.48 [63]	.94 [24]	3.95 [100]	.88 [22]	1.19 [30]	↓	.89 [23]
YA36LTC7890						2	1.38 [35]	↑	2.55 [65]	.88 [22]	1.19 [30]	↓	.89 [23]		

REV	DATE	DESCRIPTION	ECO	BY	C'H'K.
D	11/04/2011 09:30:00 AM	UPDATED TOOLING DETAILS AS PER MU	25809	BT	MA

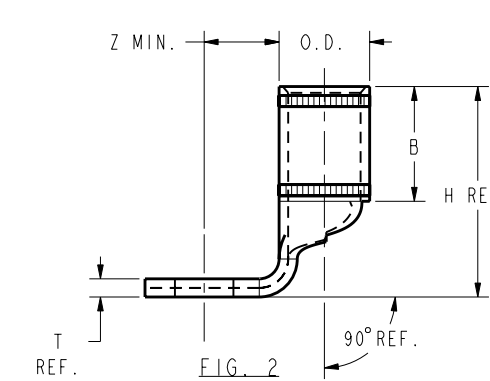
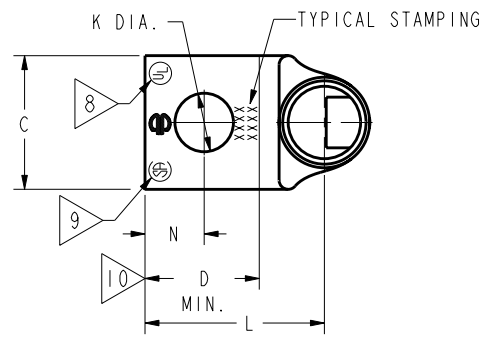
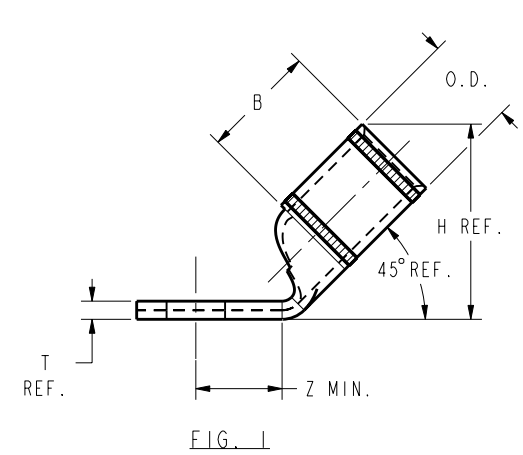
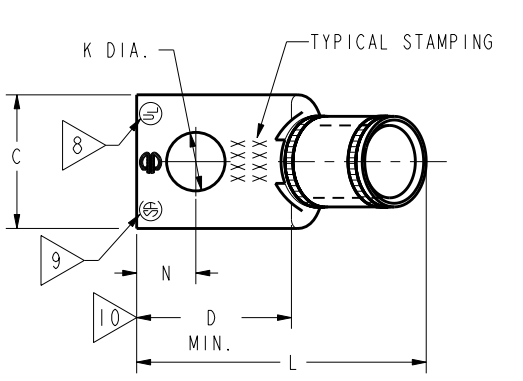
CONNECTOR SIZE	TOLERANCES					
	B	C	K DIA.	L	N	O.D.
-8C THRU -25	±.06	±.04	±.02	±.09	±.03	±.01
-26 THRU -34	±.08	±.04	±.02	±.12	±.03	±.01
-35 AND UP	±.09	±.06	±.02	±.15	±.06	±.01

TOLERANCE BLOCK

CATALOG NO.	COLOR CODE	DIE INFORMATION		MECHANICAL RATCHET				HYDRAULIC						DIELESS (# CRIMPS)	WIRE STRIP LENGTH	
		DIE INDEX	TYPE	5 YIMRTC	OUR840	MD6 MD7	MD6--R2 MD7-34R	PATMD6 PAT600	7 Y34A Y34B Y34BH	Y35, Y39 Y750, PAT750	4 Y46 PAT46	3 Y45	Y48B			Y60BHU
YA35L45	YELLOW	21	YELLOW DIE SET	-----	-----	-----	-----	-----	-----	U35RT(2)	U35RT(2)	U35RT(2)	-----	L35RT(1)	HYDRAULIC: Y644(1) Y81KFT(2) Y4PC834(2)	1-3/4"
YA35L90			NEST	-----	-----	-----	-----	-----	-----	-----	P35D(1)	-----	C35D(1)	-----		
			INDENTOR	-----	-----	-----	-----	-----	-----	-----	P44PR	-----	Y48PR	-----		
YA36L45	GREEN	22 472	GREEN DIE SET	-----	-----	-----	-----	-----	-----	U36RT(2)	U36RT(2)	U36RT(2)	C36R(1)	L36RT(1)	HYDRAULIC: Y644(1) Y81KFT(2) Y4PC834(2)	1-3/4"
YA36L90			NEST	-----	-----	-----	-----	-----	-----	-----	-----	-----	C32AR(1)	L32ART(1)		
YA36LTC7845			INDENTOR	-----	-----	-----	-----	-----	-----	-----	-----	-----	C36D(1)	-----		
YA36LTC7890				-----	-----	-----	-----	-----	-----	-----	-----	Y48PR	-----			

NOTES:

- MATERIAL : COPPER TUBING.
- FINISH: ELECTRO-TIN PLATED.
- CATALOG # PT6515 ADAPTOR IS REQUIRED TO USE "U" DIES IN Y45 SERIES TOOLS.
- CATALOG # PUADP-1 ADAPTOR IS REQUIRED TO USE "U" DIES IN Y46 SERIES TOOLS.
- PERMANENT DIE IN TOOLING.
- DIMENSIONS IN BRACKETS [] ARE IN MILLIMETERS ROUNDED OFF TO THE NEAREST MILLIMETER, UNLESS OTHERWISE NOTED, AND ARE FOR REFERENCE ONLY.
- FOR USE BY CUSTOMERS THAT HAVE THIS HYPRESS™. NO NEW Y34A HYPRESS™ TOOLS ARE BEING PROCESSED. Y34A USES A--D NEST DIES ONLY.
- CONNECTORS ARE UL LISTED; UNDRILLED VERSIONS ARE NOT UL LISTED.
- CONNECTORS ARE CSA CERTIFIED; UNDRILLED VERSIONS ARE NOT CSA CERTIFIED.
- FOR UNDRILLED VERSIONS ADD SUFFIX "-U" TO END OF CATALOG NUMBER. FOR UNDRILLED VERSIONS, USE D MIN. = N MAX. + Z MIN.
- "X", "W-RT", "W-VT", "U", & "L" DIE SETS ARE COLOR CODED. "A", "B", AND "C" DIES ARE NOT COLOR CODED. NESTS AND INDENTOR TYPE ARE NOT COLOR CODED.



REFERENCE: SD079848

TO ORDER BURNDY® PRODUCTS CALL		COPPER HYLUG™	
UNITED STATES 1-800-346-4175 (LONDONDERRY, NH)		ITEM NO: N/A	SCALE: 1:1
CANADA: 1-800-361-6975 (QUEBEC) 1-800-387-6487 (ALL OTHER PROVINCES)		CAT. NO: YA3-L-- (TABLE)	REV: D
FOR PRODUCT INFO: http://www.burndy.com		DRAWN BY: J MICHAUD 12/08/94	
		CHECKER: D FELLION 12/08/94	
		DSN APPVL: C PALAGI 12/08/94	
		MFG APPVL: -- --	
		QA APPVL: C ACKERMAN 12/23/94	
		MKT APPVL: T NELSON 12/15/94	
		PROJ #: --	
		SIZE: D	
		DOCUMENT TYPE: Sales	
		REL LEVEL: Released	
		DRAWING NO: SE209240	
		SHEET 30 OF 38	

REV: PE0200