

DRAWING NO.
SE209240

CATALOG NUMBER	STRANDED COPPER CONDUCTOR ACCOMMODATED			BOLT SIZE	METRIC BOLT SIZE	FIG. NO.	DIMENSIONS								
	CODE (AWG)	NAVY	METRIC SIZE (CLASS 2)				B	C	H REF.	K DIA.	L	N	O.D.	T REF.	Z MIN.
YA37L45	650 Kcmil		-----	5/8	M16	1	1.39 [35]	1.80 [46]	2.53 [64]	.69 [18]	3.55 [90]	.66 [17]	1.23 [31]	.27 [7]	.67 [17]
YA37L90						2	1.39 [35]	1.80 [46]	2.73 [69]	↑	2.14 [54]	↑	1.23 [31]	↑	↑
YA38L45	700 Kcmil		-----	5/8	M16	1	1.45 [37]	1.84 [47]	2.60 [66]	.69 [18]	3.60 [91]	.66 [17]	1.25 [32]	.27 [7]	.67 [17]
YA38L90						2	1.45 [37]	1.84 [47]	2.80 [71]	↓	2.15 [55]	↓	1.25 [32]	↓	↓

REV	DATE	DESCRIPTION	ECO	BY	C'H'K.
B	11/04/2011 09:30:00 AM	UPDATED TOOLING DETAILS AS PER MU	25809	BT	MA

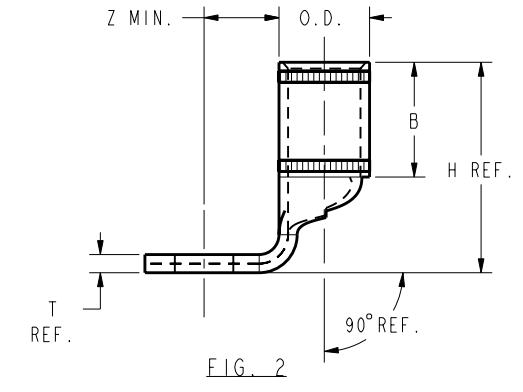
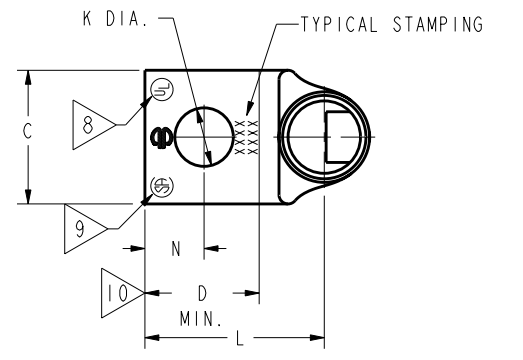
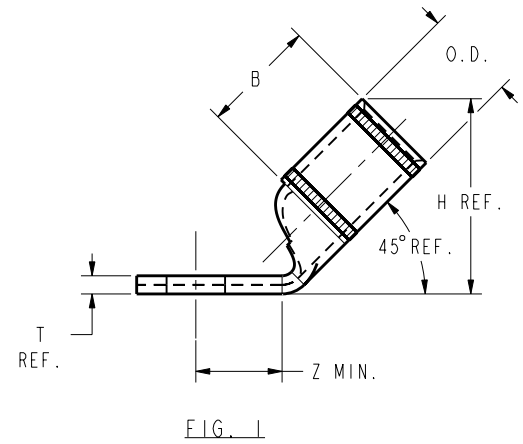
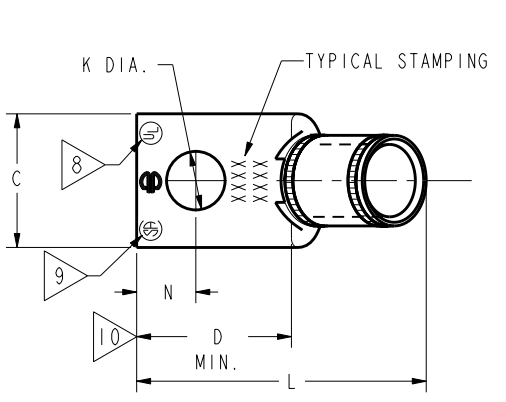
CONNECTOR SIZE	TOLERANCES					
	B	C	K DIA	L	N	O.D.
-8C THRU -25	±.06	±.04	±.02	±.09	±.03	±.01
-26 THRU -34	±.08	±.04	±.02	±.12	±.03	±.01
-35 AND UP	±.09	±.06	±.02	±.15	±.06	±.01

TOLERANCE BLOCK

CATALOG NO.	COLOR CODE	DIE INFORMATION		MECHANICAL RATCHET						HYDRAULIC					DIELESS (# CRIMPS)	WIRE STRIP LENGTH
		DIE INDEX	TYPE	5 YIMRTC	OUR840	MD6 MD7	MD6--R2 MD7-34R	PATMD6 PAT600	7 Y34A Y34B Y34BH	Y35, Y39 Y750, PAT750	4 Y46 PAT46	3 Y45	Y48B	Y60BHU		
YA37L45	ORANGE	23	ORANGE DIE SET	-----	-----	-----	-----	-----	-----	U37RT(2)	U37RT(2)	U37RT(2)	C37R(1)	L37RT(1)	HYDRAULIC: Y644(1) Y81KFT(3) Y4PC834(3)	1-15/16"
YA37L90			NEST	-----	-----	-----	-----	-----	-----	-----	P37D(1)	-----	C37D(1)	-----		
			INDENTOR	-----	-----	-----	-----	-----	-----	-----	P44PR	-----	Y48PR	-----		
YA38L45	PINK	400	PINK DIE SET	-----	-----	-----	-----	-----	-----	U38RT(2)	U38RT(2)	U38RT(2)	-----	L38RT(1)	HYDRAULIC: Y644(1) Y81KFT(3) Y4PC834(3)	1-15/16"
YA38L90			NEST	-----	-----	-----	-----	-----	-----	-----	P38D(1)	-----	C38D(1)	-----		
			INDENTOR	-----	-----	-----	-----	-----	-----	-----	P44PR	-----	Y48PR	-----		

NOTES:

- MATERIAL : COPPER TUBING.
- FINISH: ELECTRO-TIN PLATED.
- CATALOG # PT6515 ADAPTOR IS REQUIRED TO USE "U" DIES IN Y45 SERIES TOOLS.
- CATALOG # PUADP-1 ADAPTOR IS REQUIRED TO USE "U" DIES IN Y46 SERIES TOOLS.
- PERMANENT DIE IN TOOLING.
- DIMENSIONS IN BRACKETS [] ARE IN MILLIMETERS ROUNDED OFF TO THE NEAREST MILLIMETER, UNLESS OTHERWISE NOTED, AND ARE FOR REFERENCE ONLY.
- FOR USE BY CUSTOMERS THAT HAVE THIS HYPRESS™. NO NEW Y34A HYPRESS™ TOOLS ARE BEING PROCESSED. Y34A USES A--D NEST DIES ONLY.
- CONNECTORS ARE UL LISTED; UNDRILLED VERSIONS ARE NOT UL LISTED.
- CONNECTORS ARE CSA CERTIFIED; UNDRILLED VERSIONS ARE NOT CSA CERTIFIED.
- FOR UNDRILLED VERSIONS ADD SUFFIX "-U" TO END OF CATALOG NUMBER. FOR UNDRILLED VERSIONS, USE D MIN. = N MAX. + Z MIN.
- "X", "W-RT", "W-VT", "U", & "L" DIE SETS ARE COLOR CODED. "A", "B", AND "C" DIES ARE NOT COLOR CODED. NESTS AND INDENTOR TYPE ARE NOT COLOR CODED.



REFERENCE: SD079848

TO ORDER BURNDY® PRODUCTS CALL		COPPER HYLUG™	
UNITED STATES 1-800-346-4175 (LONDONDERRY, NH)		ITEM NO: N/A	SCALE: 1:1
CANADA: 1-800-361-6975 (QUEBEC) 1-800-387-6487 (ALL OTHER PROVINCES)		CAT. NO: YA3-L-- (TABLE)	REV
FOR PRODUCT INFO: http://www.burndy.com		DRAWN BY: J MICHAUD 12/08/94	SE209240
		CHECKER: D FELLION 12/08/94	B
		DSN APPVL: C PALAGI 12/08/94	SHEET 31 OF 38
		MFG APPVL: --	
		QA APPVL: C ACKERMAN 12/23/94	
		MKT APPVL: T NELSON 12/15/94	
		PROD FAM: CM&R COMPRESSION	
		PROJECT #: --	
		DOCUMENT TYPE: Sales	
		REL LEVEL: Released	

REV: PE0200