

DRAWING NO.  
SE209240

CATALOG NUMBER	STRANDED COPPER CONDUCTOR ACCOMMODATED			BOLT SIZE	METRIC BOLT SIZE	FIG. NO.	DIMENSIONS								
	CODE (AWG)	NAVY	METRIC SIZE (CLASS 2)				B	C	H REF.	K DIA.	L	N	O.D.	T REF.	Z MIN.
YA39L45	750 Kcmil	-----	375mm <sup>2</sup> STR	5/8	M16	1	1.42 [36]	1.91 [49]	2.65 [67]	.69 [18]	3.61 [92]	.66 [17]	1.30 [33]	.27 [7]	.67 [17]
YA39L90						2			2.81 [71]	.69 [18]	2.17 [55]	.66 [17]			.67 [17]
YA39L245				7/8	-----	1	2.65 [67]	.94 [24]	4.05 [103]	.88 [22]	.89 [23]				
YA39L290						2	2.81 [71]	.94 [24]	2.61 [66]	.88 [22]	.89 [23]				
YA39L945				1-1/4	-----	1	2.65 [67]	1.31 [33]	4.80 [122]	1.25 [32]	1.27 [32]				
YA39L990						2	2.81 [71]	1.31 [33]	3.36 [85]	1.25 [32]	1.27 [32]				

REV	DATE	DESCRIPTION	ECO	BY	C'H'K.
B	11/04/2011 09:30:00 AM	UPDATED TOOLING DETAILS AS PER MU	25809	BT	MA

CONNECTOR SIZE	TOLERANCES					
	B	C	K DIA.	L	N	O.D.
-8C THRU -25	±.06	±.04	±.02	±.09	±.03	±.01
-26 THRU -34	±.08	±.04	±.02	±.12	±.03	±.01
-35 AND UP	±.09	±.06	±.02	±.15	±.06	±.01

TOLERANCE BLOCK

INSTALLATION TOOLING (# CRIMPS)

CATALOG NO.	COLOR CODE	DIE INFORMATION		MECHANICAL RATCHET				HYDRAULIC					DIELESS (# CRIMPS)	WIRE STRIP LENGTH		
		DIE INDEX	TYPE	5 YIMRTC	OUR840	MD6 MD7	MD6--R2 MD7-34R	PATMD6 PAT600	7 Y34A Y34B Y34BH	Y35, Y39 Y750, PAT750	4 PAT46	3 Y45			Y48B	Y60BHU
YA39L45	BLACK	24	BLACK DIE SET	----	----	----	----	----	----	U39RT(2)	U39RT(2)	U39RT(2)	C39R(1)	L39RT(1)	HYDRAULIC: Y644(1) Y81KFT(3) Y4PC834(3)	1-15/16"
YA39L90			NEST	----	----	----	----	----	----	P39D(1)	-----	-----	C39D(1)	-----		
			INDENTOR	----	----	----	----	----	----	P44PR	-----	-----	Y48PR	-----		

NOTES:

- MATERIAL : COPPER TUBING.
- FINISH: ELECTRO-TIN PLATED.
- CATALOG # PT6515 ADAPTOR IS REQUIRED TO USE "U" DIES IN Y45 SERIES TOOLS.
- CATALOG # PUADP-1 ADAPTOR IS REQUIRED TO USE "U" DIES IN Y46 SERIES TOOLS.
- PERMANENT DIE IN TOOLING.
- DIMENSIONS IN BRACKETS [ ] ARE IN MILLIMETERS ROUNDED OFF TO THE NEAREST MILLIMETER, UNLESS OTHERWISE NOTED, AND ARE FOR REFERENCE ONLY.
- FOR USE BY CUSTOMERS THAT HAVE THIS HYPRESS™. NO NEW Y34A HYPRESS™ TOOLS ARE BEING PROCESSED. Y34A USES A--D NEST DIES ONLY.
- CONNECTORS ARE UL LISTED; UNDRILLED VERSIONS ARE NOT UL LISTED.
- CONNECTORS ARE CSA CERTIFIED; UNDRILLED VERSIONS ARE NOT CSA CERTIFIED.
- FOR UNDRILLED VERSIONS ADD SUFFIX "-U" TO END OF CATALOG NUMBER. FOR UNDRILLED VERSIONS, USE D MIN. = N MAX. + Z MIN.
- "X", "W-RT", "W-VT", "U", & "L" DIE SETS ARE COLOR CODED. "A", "B", AND "C" DIES ARE NOT COLOR CODED. NESTS AND INDENTOR TYPE ARE NOT COLOR CODED.

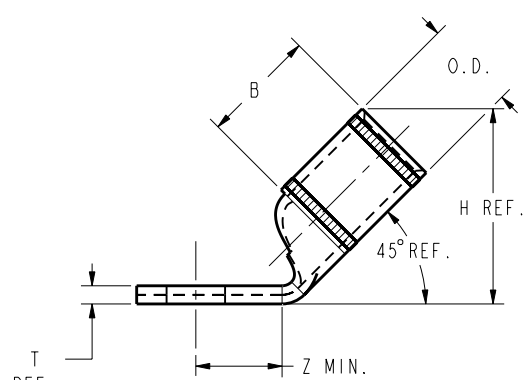
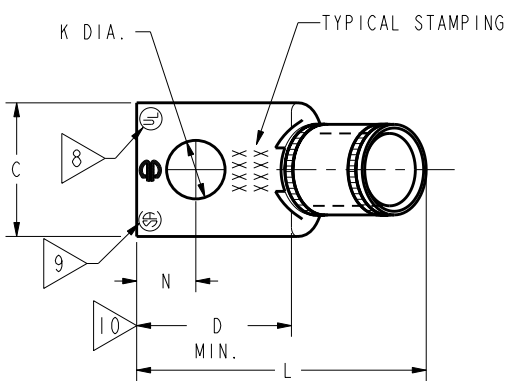


FIG. 1

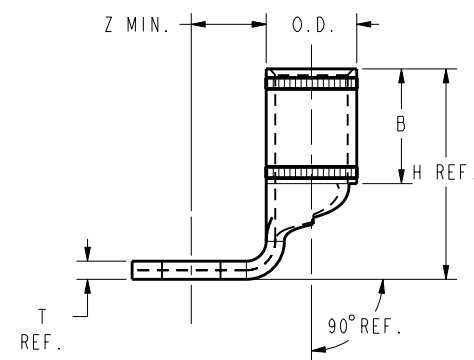
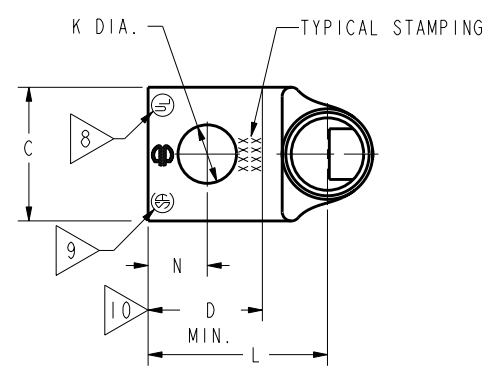


FIG. 2

REFERENCE: SD079848

TO ORDER BURNDY® PRODUCTS CALL		COPPER HYLUG™	
UNITED STATES		ITEM NO:	N/A
1-800-346-4175 (LONDONDERRY, NH)		CAT. NO:	YA39-L-- (TABLE)
CANADA:		DRAWN BY:	J MICHAUD 12/08/94
1-800-361-6975 (QUEBEC)		CHECKER:	D FELLION 12/08/94
1-800-387-6487 (ALL OTHER PROVINCES)		DSN APPVL:	C PALAGI 12/08/94
FOR PRODUCT INFO: <a href="http://www.burndy.com">http://www.burndy.com</a>		MFG APPVL:	---
		QA APPVL:	C ACKERMAN 12/23/94
		MKT APPVL:	T NELSON 12/15/94
		PROJ #:	---
		SIZE:	D
		SCALE:	1:1
		DOCUMENT TYPE:	Sales
		REL LEVEL:	Released
		DRAWING NO:	SE209240
		SHEET:	32 OF 38
		REV:	B

REV: PE0200