

DRAWING NO.
SE209240

CATALOG NUMBER	STRANDED COPPER CONDUCTOR ACCOMMODATED		BOLT SIZE	METRIC BOLT SIZE	FIG. NO.	DIMENSIONS									
	CODE (AWG)	NAVY				METRIC SIZE (CLASS 2)	B	C	H REF.	K DIA.	L	N	O.D.	T REF.	Z MIN.
YA46L45	1500 Kcmil	-----	800mm ² STR [37.6]	3/4	-----	1	2.00 [51]	2.69 [68]	3.73 [95]	.81 [21]	4.75 [121]	.75 [19]	1.84 [47]	.40 [10]	.77 [20]
YA46L90						2	2.00 [51]	2.69 [68]	3.98 [101]	.81 [21]	2.71 [69]	.75 [19]	1.84 [47]	.40 [10]	.77 [20]

REV	DATE	DESCRIPTION	ECO	BY	C'H'K.
B	11/04/2011 09:30:00 AM	UPDATED TOOLING DETAILS AS PER MU	25809	BT	MA

CONNECTOR SIZE	TOLERANCES					
	B	C	K DIA.	L	N	O.D.
-8C THRU -25	±.06	±.04	±.02	±.09	±.03	±.01
-26 THRU -34	±.08	±.04	±.02	±.12	±.03	±.01
-35 AND UP	±.09	±.06	±.02	±.15	±.06	±.01

TOLERANCE BLOCK

INSTALLATION TOOLING (# CRIMPS)																
CATALOG NO.	COLOR CODE	DIE INFORMATION		MECHANICAL RATCHET				HYDRAULIC					DIELESS (# CRIMPS)	WIRE STRIP LENGTH		
		DIE INDEX	TYPE	5 YIMRTC	OUR840	MD6 MD7	MD6--R2 MD7-34R	PATMD6 PAT600	7 Y34A Y34B Y34BH	Y35, Y39 Y750, PAT750	4 PAT46	3 Y45			Y48B	Y60BHU
YA46L45	GREEN	31	GREEN DIE SET	-----	-----	-----	-----	-----	-----	-----	P46RT(3)	S46RT(3)	C46R(2)	L46RT(2)	-----	2-1/16"
YA46L90			NEST	-----	-----	-----	-----	-----	-----	-----	-----	-----	C46D(1)	-----		
			INDENTOR	-----	-----	-----	-----	-----	-----	-----	-----	-----	-----	Y48PR		

NOTES:

- MATERIAL : COPPER TUBING.
- FINISH: ELECTRO-TIN PLATED.
- CATALOG # PT6515 ADAPTOR IS REQUIRED TO USE "U" DIES IN Y45 SERIES TOOLS.
- CATALOG # PUADP-1 ADAPTOR IS REQUIRED TO USE "U" DIES IN Y46 SERIES TOOLS.
- PERMANENT DIE IN TOOLING.
- DIMENSIONS IN BRACKETS [] ARE IN MILLIMETERS ROUNDED OFF TO THE NEAREST MILLIMETER, UNLESS OTHERWISE NOTED, AND ARE FOR REFERENCE ONLY.
- FOR USE BY CUSTOMERS THAT HAVE THIS HYPRESS™. NO NEW Y34A HYPRESS™ TOOLS ARE BEING PROCESSED. Y34A USES A--D NEST DIES ONLY.
- CONNECTORS ARE UL LISTED; UNDRILLED VERSIONS ARE NOT UL LISTED.
- CONNECTORS ARE CSA CERTIFIED; UNDRILLED VERSIONS ARE NOT CSA CERTIFIED.
- FOR UNDRILLED VERSIONS ADD SUFFIX "-U" TO END OF CATALOG NUMBER. FOR UNDRILLED VERSIONS, USE D MIN. = N MAX. + Z MIN.
- "X", "W-RT", "W-VT", "U", & "L" DIE SETS ARE COLOR CODED. "A", "B", AND "C" DIES ARE NOT COLOR CODED. NESTS AND INDENTOR TYPE ARE NOT COLOR CODED.
- INDENTOR ONLY - NO NEST REQUIRED.

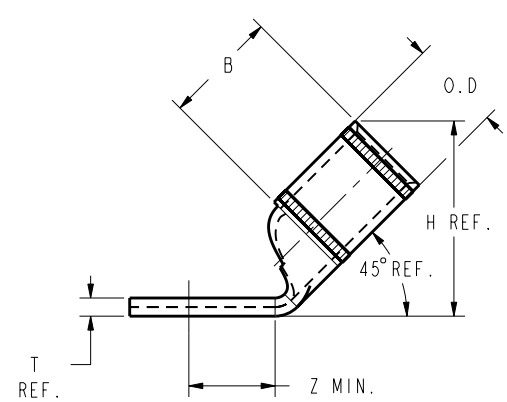
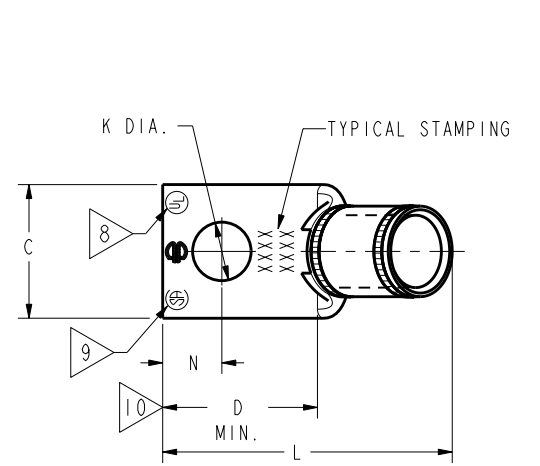


FIG. 1

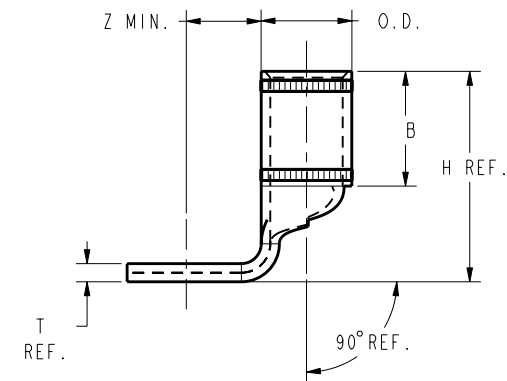
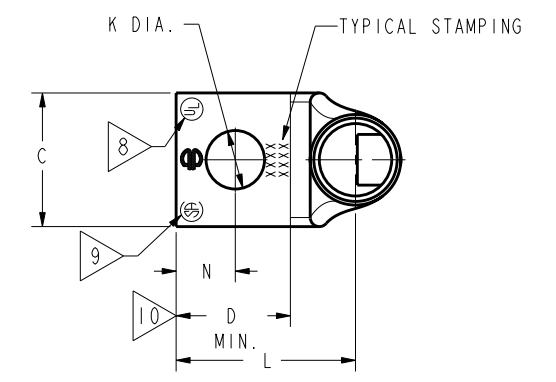


FIG. 2

REFERENCE: SD079848

TO ORDER BURNDY® PRODUCTS CALL		COPPER HYLUG™	
UNITED STATES		ITEM NO: N/A	
1-800-346-4175 (LONDONDERRY, NH)		CAT. NO: YA46-L-- (TABLE)	
CANADA:		DRAWN BY: J MITCHAUD 12/08/94	
1-800-361-6975 (QUEBEC)		CHECKER: D FELLION 12/08/94	
1-800-387-6487 (ALL OTHER PROVINCES)		DSN APPVL: C PALAGI 12/08/94	
FOR PRODUCT INFO: http://www.burndy.com		MFG APPVL: --	
		QA APPVL: C ACKERMAN 12/23/94	
		MKT APPVL: T NELSON 12/15/94	
		PROJ #: --	SCALE: 1:1
		PROJ TYPE: Sales	DRAWING NO: SE209240
		REL LEVEL: Released	REV: B
			SHEET 37 OF 38

REV: PE0200