

DRAWING NO. SE209241	7			6		5		4		3		2		1									
	CATALOG NUMBER	STRANDED COPPER CONDUCTOR CODE (AWG)	NAVY	ACCOMMODATED METRIC SIZE (CLASS 2)	BOLT SIZE	METRIC BOLT SIZE	FIG. NO.	DIMENSIONS						REVI	DATE	DESCRIPTION	ECO	BY	C'H'K.				
							B	C	H REF.	K DIA.	L	N	O.D.	T REF.	Z MIN.	B	11/09/2011 00:00:00 AM	TOOLING DETAILS UPDATED AS PER MARKUP	25811	DK	MA		
YA2CTC1045	#2 AWG	50	-----	#10	-----	1	1.25 [32]	.60 [15]	1.43 [36]	.21 [5]	1.90 [48]	.25 [6]	.42 [11]	.11 [3]	.27 [7]								
YA2CTC1090						2		1.76 [45]	.21 [5]	.82 [21]	.25 [6]	.27 [7]											
YA2CTC1445						1		1.43 [36]	.27 [7]	2.02 [51]	.31 [8]	.33 [8]											
YA2CTC1490						2		1.76 [45]	.27 [7]	.95 [24]	.31 [8]	.33 [8]											
YA2C45				1/4	M6	-----	1	-----	1	1.43 [36]	.33 [8]	2.09 [53]	.34 [9]		.42 [11]	.11 [3]	.36 [9]						
YA2C90									2		1.76 [45]	.33 [8]	1.01 [26]	.34 [9]			.36 [9]						
YA2CN45									1		.83 [21]	1.46 [37]	.56 [14]	2.70 [69]			.63 [16]	.12 [3]	.64 [16]				
YA2CN90									2		.83 [21]	1.81 [46]	.56 [14]	1.58 [40]			.63 [16]	.12 [3]	.64 [16]				

CONNECTOR SIZE	TOLERANCES					
	B	C	K DIA.	L	N	O.D.
-8C THRU -25	±.06	±.04	±.02	±.09	±.03	±.01
-26 THRU -34	±.08	±.04	±.02	±.12	±.03	±.01
-35 AND UP	±.09	±.06	±.02	±.15	±.06	±.01

TOLERANCE BLOCK

CATALOG NO.	DIE INFORMATION			MECHANICAL RATCHET				HYDRAULIC						DIELESS (# CRIMPS)	WIRE STRIP LENGTH	
	COLOR CODE	DIE INDEX	TYPE	YIMRTC	OUR840	MD6 MD7	MD6--R2 MD7-34R	PATMD6 PAT600	Y34A Y34B Y34BH	Y35, Y39 Y750, BAT35 PAT750	Y46 PAT46	Y45	Y48B			Y60BHU
YA2CTC1045 90 YA2CTC1445 90 YA2C45 90 YA2CN45 90	BROWN	10	BROWN DIE SET	BROWN (4)	X2CRT(2)	X2CRT(2) W2CRT(2) W2CVT(2)	X2CRT(2) W2CRT(2) W2CVT(2)	X2CRT(2) W2CRT(2) W2CVT(2)	-----	U2CRT(2)	U2CRT(2)	U2CRT(2)	-----	-----	MECHANICAL: MY29-3(2) MY29-11(2) MRC840(2) HYDRAULIC: Y644(1) Y81KFT(2) YY4PC834(2)	1-5/16"
			NEST INDENTOR	-----	-----	-----	-----	B2CD(1) A2CD(1) Y34PR	U2CD-1(1) Y34PR	U2CD-1(1) Y34PR	U2CD-1(1) Y34PR					

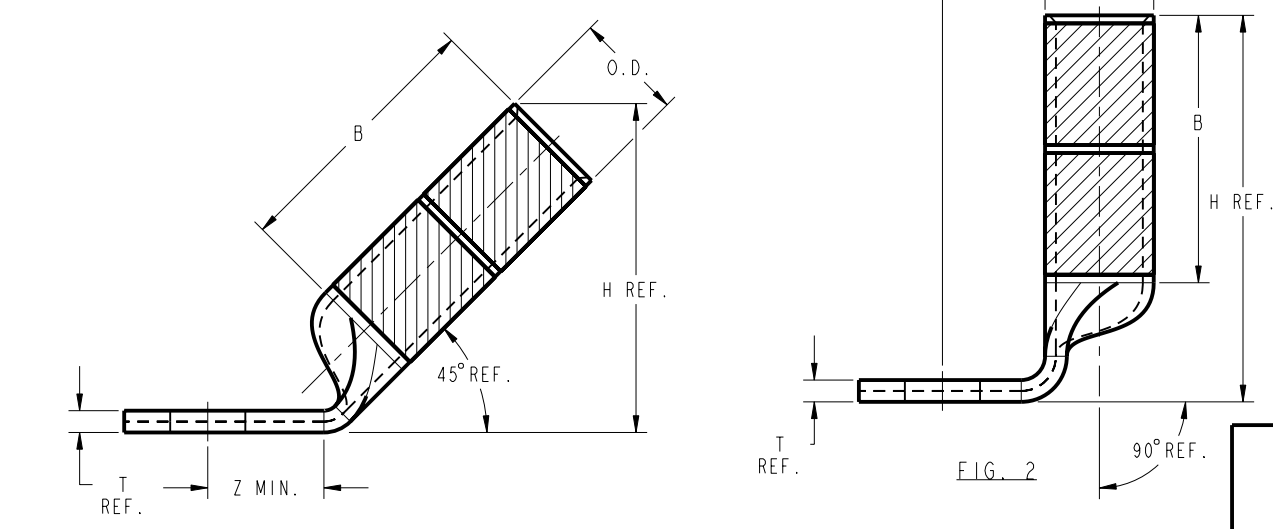
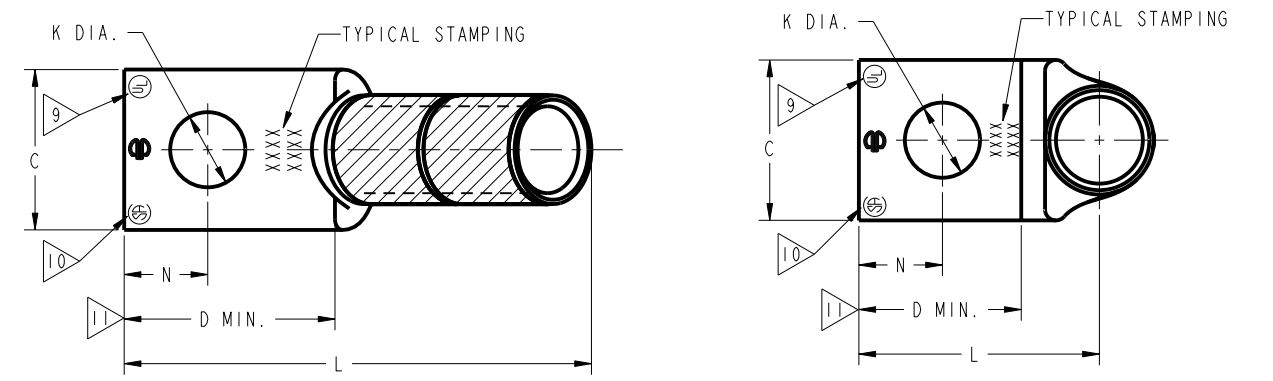


FIG. 1

- NOTES:
- MATERIAL : COPPER TUBING.
 - FINISH: ELECTRO-TIN PLATED.
 - CATALOG # PT6515 ADAPTOR IS REQUIRED TO USE "U" DIES IN Y45 SERIES TOOLS.
 - CATALOG # PUADP-1 ADAPTOR IS REQUIRED TO USE "U" DIES IN Y46 SERIES TOOLS.
 - Y35P3 INDENTOR ADAPTOR REQUIRED FOR Y34PR INDENTOR.
 - PERMANENT DIE IN TOOLING.
 - DIMENSIONS IN BRACKETS [] ARE IN MILLIMETERS ROUNDED OFF TO THE NEAREST MILLIMETER, UNLESS OTHERWISE NOTED, AND ARE FOR REFERENCE ONLY.
 - FOR USE BY CUSTOMERS THAT HAVE THIS HYPRESS™. NO NEW Y34A HYPRESSES™ ARE BEING PROCESSED. Y34A USES A--D NEST DIES ONLY.
 - CONNECTORS ARE UL LISTED; UNDRILLED VERSIONS ARE NOT UL LISTED.
 - CONNECTORS ARE CSA CERTIFIED; UNDRILLED VERSIONS ARE NOT CSA CERTIFIED.
 - FOR UNDRILLED VERSIONS ADD SUFFIX "-U" TO END OF CATALOG NUMBER. FOR UNDRILLED VERSIONS, USE D MIN. = N MAX. + Z MIN.
 - "X", "W-RT", "W-VT", "U", & "L" DIE SETS ARE COLOR CODED. "A", "B", AND "C" DIES ARE NOT COLOR CODED. NESTS AND INDENTOR TYPE ARE NOT COLOR CODED.

TO ORDER BURNDY® PRODUCTS CALL
 UNITED STATES
 1-800-346-4175 (LONDONDERRY, NH)
 CANADA:
 1-800-361-6975 (QUEBEC)
 1-800-387-6487 (ALL OTHER PROVINCES)
 FOR PRODUCT INFO: <http://www.burndy.com>

REFERENCE: SD79849

COPPER HYLUG™

ITEM NO:	N/A
CAT. NO:	YA-TC-45,-90 / YA-45,-90 / YA-N-45,-90
DRAWN BY:	J. MICHAUD 1/17/95
CHECKER:	D. FILLION 1/17/95
DSN APPVL:	C. PALAGI 1/18/95
MFG APPVL:	N/A
QA APPVL:	C. ACKERMAN 2/03/95
MKT APPVL:	T. NELSON 1/20/95
PROD FAM:	CM&R COMPRESSION
PROJECT #:	---
DOCUMENT TYPE:	Sales
REL LEVEL:	Released

SCALE: NTS

DRAWING NO: SE209241
 SHEET 8 OF 32

REV: PE0200