

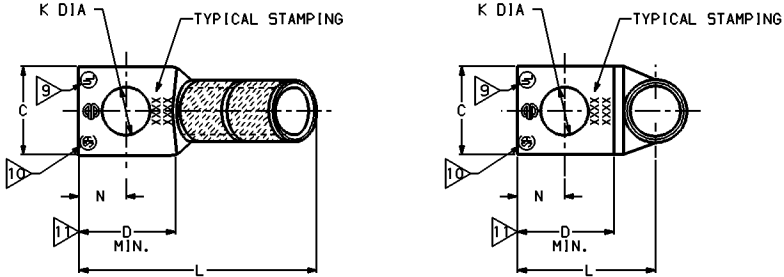
CATALOG NUMBER	STRANDED COPPER CONDUCTOR ACCOMMODATED			BOLT SIZE	METRIC BOLT SIZE	FIG. NO.	DIMENSIONS								
	CODE (AWG)	NAVY	METRIC SIZE (CLASS 2)				B	C	H REF	K DIA	L	N	O.D.	T REF	Z MIN
YA2C-TC10-45	#2 AWG	60	----	#10	----	1	1.25 [32]	.60 [15]	1.43 [36]	.21 [5]	1.90 [48]	.25 [6]	.42 [11]	.11 [3]	.27 [7]
2						1.76 [45]	.21 [5]	.82 [21]	.25 [6]	.27 [7]					
1						1.43 [36]	.27 [7]	2.02 [51]	.31 [8]	.33 [8]					
2						1.76 [45]	.27 [7]	.95 [24]	.31 [8]	.33 [8]					
YA2C-45				5/16	----	M6	1	1.43 [36]	.33 [8]	2.09 [53]	.34 [9]	.36 [9]			
2							.60 [15]	1.76 [45]	.33 [8]	1.01 [26]	.34 [9]	.36 [9]			
1							.83 [21]	1.46 [37]	.56 [14]	2.70 [69]	.63 [16]	.64 [16]			
2							1.25 [32]	.83 [21]	1.81 [46]	.56 [14]	1.58 [40]	.63 [16]	.64 [16]		

CONNECTOR SIZE	TOLERANCES					
	B	C	K DIA	L	N	O.D.
-8C THRU -25	±.06	+ .04 - .02	±.02	±.09	±.03	±.01
-26 THRU -34	±.08	+ .04 - .06	±.02	±.12	±.03	±.01
-35 AND UP	±.09	±.06	±.02	±.15	±.06	±.01

TOLERANCE BLOCK

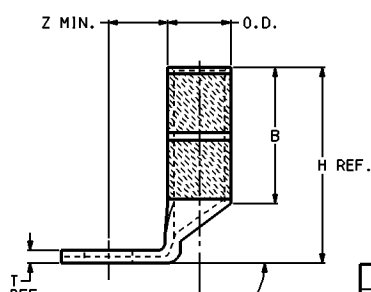
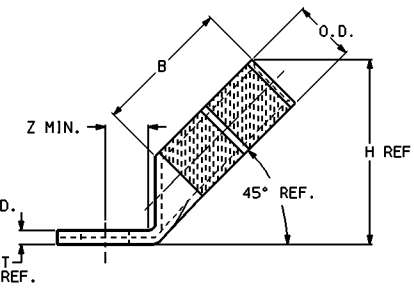
INSTALLATION TOOLING (# CRIMPS)

CATALOG NO.	DIE INFORMATION			MECHANICAL RATCHET					HYDRAULIC				DIELESS (# CRIMPS)	WIRE STRIP LENGTH		
	COLOR CODE	DIE INDEX	TYPE	Y2HR	OUR840	MD6 MD7	MD6--R2 BAT500	MD7-34R	Y34A Y34B Y34BH	Y35, Y39 Y750, BAT35 BAT750	Y46	Y45			Y48B	Y60BHU
YA2C-TC10-45, -90	BROWN	10	BROWN DIE SET	BROWN (4)	X2CRT (2)	W2CRT (2)	W2CRT (2)	W2CRT (2)	-----	U2CRT (2)	U2CRT (2)	U2CRT (2)	-----	-----	MECHANICAL: MV29-3 (2) MV29-11 (2) HYDRAULIC: Y644M (1) BAT644M (1)	1-5/16"
YA2C-TC14-45, -90			NEST	-----	-----	-----	-----	B2CD (1) A2CD (1)	Y34PR	U2CD-1 (1)	Y34PR	U2CD-1 (1)	Y34PR	-----		
YA2C-45, -90			INDENTOR	-----	-----	-----	-----	-----	-----	-----	-----	-----	-----	-----		
YA2C-N-45, -90			-----	-----	-----	-----	-----	-----	-----	-----	-----	-----	-----	-----		



NOTES:

- MATERIAL: COPPER TUBING.
- FINISH: ELECTRO-TIN PLATED.
- CATALOG # PT6515 ADAPTOR IS REQUIRED TO USE "U" DIES IN Y45 SERIES TOOLS.
- CATALOG # PUADP-1 ADAPTOR IS REQUIRED TO USE "U" DIES IN Y46 SERIES TOOLS.
- Y35P3 INDENTOR ADAPTOR REQUIRED FOR Y34PR INDENTOR.
- PERMANENT DIE IN TOOLING.
- DIMENSIONS IN BRACKETS [] ARE IN MILLIMETERS ROUNDED OFF TO THE NEAREST MILLIMETER, UNLESS OTHERWISE NOTED, AND ARE FOR REFERENCE ONLY.
- FOR USE BY CUSTOMERS THAT HAVE THIS HYPRESS™. NO NEW Y34A HYPRESSES™ ARE BEING PROCESSED. Y34A USES A--D NEST DIES ONLY.
- CONNECTORS ARE UL LISTED; UNDRILLED VERSIONS ARE NOT UL LISTED.
- CONNECTORS ARE CSA CERTIFIED; UNDRILLED VERSIONS ARE NOT CSA CERTIFIED.
- FOR UNDRILLED VERSIONS ADD SUFFIX "-U" TO END OF CATALOG NUMBER. FOR UNDRILLED VERSIONS, USE D MIN. = N MAX. + Z MIN.
- "X", "W-RT", "W-VT", "U", & "L" DIE SETS ARE COLOR CODED. "A", "B", AND "C" DIES ARE NOT COLOR CODED. NESTS AND INDENTOR TYPE ARE NOT COLOR CODED.



REFERENCE: SD79849

COPPER HYLUG™	
CAT NO: YA--TC-45, -90 / YA--45, -90	SCALE: N/A
DRAWN: J MICHAUD	1/17/95
CHECKED: D FILLION	1/17/95
DESIGN APPR: C PALAGI	1/18/95
MFG APPR: T NELSON	1/20/95
DATE FILE: SE209241-SHT08	REV: N/A
PROJECT: DO 53089	DRAWING NO: SE209241
SHEET 8	OF 32

REV.	DATE	DESCRIPTION	BY	CHK'D.
1	06-MAR-96	ADDED YA2C-TC14-45 AND YA2C-TC14-90 TO DRAWING (FCN 2793)	NSP	JLM
0	2/7/95	DRAWING RELEASED	JLM	.