

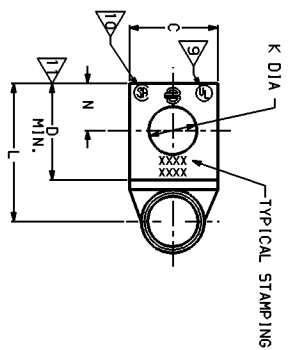
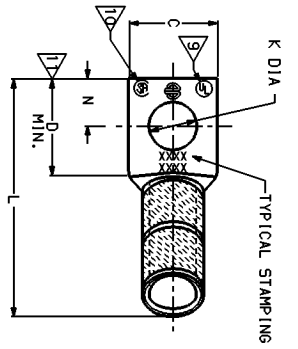
CATALOG NUMBER	STRAINED COPPER CONDUCTOR ACCOMMODATED (AWG)	NAVY METRIC SIZE (CLASS 2)	BOLT SIZE	METRIC BOLT SIZE	FIG. NO.	DIMENSIONS										
						B	C	H	REF	K	L	N	O.D.	T	REF	Z
YA28-TC38-45					1	1.62 [41]	1.02 [26]	2.04 [52]	.40 [10]	2.68 [68]	.41 [10]	.69 [18]	.14 [4]	.42 [11]		
YA28-TC38-90			3/8		2			2.39 [61]	.40 [10]	1.29 [33]	.41 [10]		.42 [11]			
YA28-45		4/0 AWG			1			2.04 [52]	.53 [13]	2.93 [74]	.53 [13]		.55 [14]			
YA28-90			1/2		2			2.39 [61]	.53 [13]	1.54 [39]	.53 [13]		.55 [14]			
YA28-N-45			1/2	M12	1			2.04 [52]	.56 [14]	3.12 [79]	.63 [16]		.64 [16]			
YA28-N-90				M12	2	1.62 [41]	1.02 [26]	2.39 [61]	.56 [14]	1.73 [44]	.63 [16]	.69 [18]	.14 [4]	.64 [16]		

CONNECTOR SIZE	TOLERANCES									
	B	C	K	DIA	L	N	O.D.			
-8C THRU -25	±.06	+04	±.02	±.09	±.03	±.01				
-26 THRU -34	±.08	+04	±.02	±.12	±.03	±.01				
-35 AND UP	±.09	±.06	±.02	±.15	±.06	±.01				

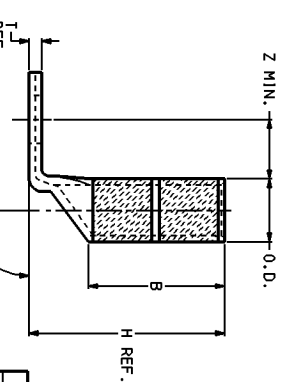
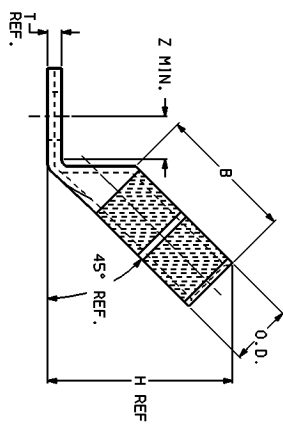
TOLERANCE BLOCK

INSTALLATION TOOLING (CRIMPS)

CATALOG NO.	DIE INFORMATION			MECHANICAL BATCHET				HYDRAULIC				DIELESS (CRIMPS)	WIRE STRIP LENGTH	
	COLOR CODE	DIE INDEX	TYPE	MO6 MO7	MO6-BAT500	MO7-34R	Y34A Y34B Y34BH	Y35, Y39 BAT750	Y46	Y45	Y48B			Y608HU
YA28-TC38-45	PURPLE	15	Y2MR	W28RT (6)	W28RT (4)	W28RT (4)	W28RT (4)	W28RT (2)	U28RT (2)	U28RT (2)	C28R (2)	L28RT (1)		
YA28-TC38-90				W28VT (4)	W28VT (4)	W28VT (4)		U28D-1 (1)	U28D-1 (1)	U28D-1 (1)	C28D (1)	Y48PR		M29-3 (2) M29-11 (2) HYDRAULIC M29-11 (2) BAT54RH (1)
YA28-45, -90								Y34PR	Y34PR	Y34PR	Y48PR			



- NOTES:**
1. MATERIAL: COPPER TUBING.
 2. FINISH: ELECTRO-TIN PLATED.
 3. CATALOG # P16515 ADAPTOR IS REQUIRED TO USE "U" DIES IN Y45 SERIES TOOLS.
 4. CATALOG # P16515 ADAPTOR IS REQUIRED TO USE "U" DIES IN Y46 SERIES TOOLS.
 5. Y35P3 INDENTOR ADAPTOR REQUIRED FOR Y34PR INDENTOR.
 6. PERMANENT DIE IN TOOLING.
 7. DIMENSIONS IN BRACKETS [] ARE IN MILLIMETERS ROUNDED OFF TO THE NEAREST MILLIMETER, UNLESS OTHERWISE NOTED, AND ARE FOR REFERENCE ONLY.
 8. FOR USE BY CUSTOMERS THAT HAVE THIS HYPPRESS™ NO NEW Y34A HYPPRESSES™ ARE BEING PROCESSED. Y34A USES A--D NEST DIES ONLY.
 9. CONNECTORS ARE UL LISTED, UNDRILLED VERSIONS ARE NOT UL LISTED.
 10. CONNECTORS ARE CSA CERTIFIED, UNDRILLED VERSIONS ARE NOT CSA CERTIFIED.
 11. FOR UNDRILLED VERSIONS ADD SUFFIX "-U" TO END OF CATALOG NUMBER.
 12. "X", "M-RT", "M-VT", "U", & "L" DIE SETS ARE COLOR CODED. "A", "B", AND "C" DIES ARE NOT COLOR CODED. NESTS AND INDENTOR TYPE ARE NOT COLOR CODED.



REFERENCE: 5D79849

COPPER HYLUG™

REV. 061955	1	3/18/96	ADDED PHONE # AND "TM" TO TRADEMARKS; C TOP FOR -25	JMA	JLM	BY	C K'D.	1
REV. 061955	1	3/18/96	0 -34 SIZES WAS 2, 0.42, 0.42 & 1.18 DIA. THRU (CON 28011)	JMA	JLM	BY	C K'D.	1
REV. 061955	1	3/18/96	DESCRIPTION	JMA	JLM	BY	C K'D.	1
REV. 061955	1	3/18/96	DATE	JMA	JLM	BY	C K'D.	1
REV. 061955	1	3/18/96	DESCRIPTION	JMA	JLM	BY	C K'D.	1
REV. 061955	1	3/18/96	DATE	JMA	JLM	BY	C K'D.	1
REV. 061955	1	3/18/96	DESCRIPTION	JMA	JLM	BY	C K'D.	1
REV. 061955	1	3/18/96	DATE	JMA	JLM	BY	C K'D.	1
REV. 061955	1	3/18/96	DESCRIPTION	JMA	JLM	BY	C K'D.	1
REV. 061955	1	3/18/96	DATE	JMA	JLM	BY	C K'D.	1
REV. 061955	1	3/18/96	DESCRIPTION	JMA	JLM	BY	C K'D.	1
REV. 061955	1	3/18/96	DATE	JMA	JLM	BY	C K'D.	1
REV. 061955	1	3/18/96	DESCRIPTION	JMA	JLM	BY	C K'D.	1
REV. 061955	1	3/18/96	DATE	JMA	JLM	BY	C K'D.	1
REV. 061955	1	3/18/96	DESCRIPTION	JMA	JLM	BY	C K'D.	1
REV. 061955	1	3/18/96	DATE	JMA	JLM	BY	C K'D.	1
REV. 061955	1	3/18/96	DESCRIPTION	JMA	JLM	BY	C K'D.	1
REV. 061955	1	3/18/96	DATE	JMA	JLM	BY	C K'D.	1
REV. 061955	1	3/18/96	DESCRIPTION	JMA	JLM	BY	C K'D.	1
REV. 061955	1	3/18/96	DATE	JMA	JLM	BY	C K'D.	1
REV. 061955	1	3/18/96	DESCRIPTION	JMA	JLM	BY	C K'D.	1
REV. 061955	1	3/18/96	DATE	JMA	JLM	BY	C K'D.	1
REV. 061955	1	3/18/96	DESCRIPTION	JMA	JLM	BY	C K'D.	1
REV. 061955	1	3/18/96	DATE	JMA	JLM	BY	C K'D.	1
REV. 061955	1	3/18/96	DESCRIPTION	JMA	JLM	BY	C K'D.	1
REV. 061955	1	3/18/96	DATE	JMA	JLM	BY	C K'D.	1
REV. 061955	1	3/18/96	DESCRIPTION	JMA	JLM	BY	C K'D.	1
REV. 061955	1	3/18/96	DATE	JMA	JLM	BY	C K'D.	1
REV. 061955	1	3/18/96	DESCRIPTION	JMA	JLM	BY	C K'D.	1
REV. 061955	1	3/18/96	DATE	JMA	JLM	BY	C K'D.	1
REV. 061955	1	3/18/96	DESCRIPTION	JMA	JLM	BY	C K'D.	1
REV. 061955	1	3/18/96	DATE	JMA	JLM	BY	C K'D.	1
REV. 061955	1	3/18/96	DESCRIPTION	JMA	JLM	BY	C K'D.	1
REV. 061955	1	3/18/96	DATE	JMA	JLM	BY	C K'D.	1
REV. 061955	1	3/18/96	DESCRIPTION	JMA	JLM	BY	C K'D.	1
REV. 061955	1	3/18/96	DATE	JMA	JLM	BY	C K'D.	1
REV. 061955	1	3/18/96	DESCRIPTION	JMA	JLM	BY	C K'D.	1
REV. 061955	1	3/18/96	DATE	JMA	JLM	BY	C K'D.	1
REV. 061955	1	3/18/96	DESCRIPTION	JMA	JLM	BY	C K'D.	1
REV. 061955	1	3/18/96	DATE	JMA	JLM	BY	C K'D.	1
REV. 061955	1	3/18/96	DESCRIPTION	JMA	JLM	BY	C K'D.	1
REV. 061955	1	3/18/96	DATE	JMA	JLM	BY	C K'D.	1
REV. 061955	1	3/18/96	DESCRIPTION	JMA	JLM	BY	C K'D.	1
REV. 061955	1	3/18/96	DATE	JMA	JLM	BY	C K'D.	1
REV. 061955	1	3/18/96	DESCRIPTION	JMA	JLM	BY	C K'D.	1
REV. 061955	1	3/18/96	DATE	JMA	JLM	BY	C K'D.	1
REV. 061955	1	3/18/96	DESCRIPTION	JMA	JLM	BY	C K'D.	1
REV. 061955	1	3/18/96	DATE	JMA	JLM	BY	C K'D.	1
REV. 061955	1	3/18/96	DESCRIPTION	JMA	JLM	BY	C K'D.	1
REV. 061955	1	3/18/96	DATE	JMA	JLM	BY	C K'D.	1
REV. 061955	1	3/18/96	DESCRIPTION	JMA	JLM	BY	C K'D.	1
REV. 061955	1	3/18/96	DATE	JMA	JLM	BY	C K'D.	1
REV. 061955	1	3/18/96	DESCRIPTION	JMA	JLM	BY	C K'D.	1
REV. 061955	1	3/18/96	DATE	JMA	JLM	BY	C K'D.	1
REV. 061955	1	3/18/96	DESCRIPTION	JMA	JLM	BY	C K'D.	1
REV. 061955	1	3/18/96	DATE	JMA	JLM	BY	C K'D.	1
REV. 061955	1	3/18/96	DESCRIPTION	JMA	JLM	BY	C K'D.	1
REV. 061955	1	3/18/96	DATE	JMA	JLM	BY	C K'D.	1
REV. 061955	1	3/18/96	DESCRIPTION	JMA	JLM	BY	C K'D.	1
REV. 061955	1	3/18/96	DATE	JMA	JLM	BY	C K'D.	1
REV. 061955	1	3/18/96	DESCRIPTION	JMA	JLM	BY	C K'D.	1
REV. 061955	1	3/18/96	DATE	JMA	JLM	BY	C K'D.	1
REV. 061955	1	3/18/96	DESCRIPTION	JMA	JLM	BY	C K'D.	1
REV. 061955	1	3/18/96	DATE	JMA	JLM	BY	C K'D.	1
REV. 061955	1	3/18/96	DESCRIPTION	JMA	JLM	BY	C K'D.	1
REV. 061955	1	3/18/96	DATE	JMA	JLM	BY	C K'D.	1
REV. 061955	1	3/18/96	DESCRIPTION	JMA	JLM	BY	C K'D.	1
REV. 061955	1	3/18/96	DATE	JMA	JLM	BY	C K'D.	1
REV. 061955	1	3/18/96	DESCRIPTION	JMA	JLM	BY	C K'D.	1
REV. 061955	1	3/18/96	DATE	JMA	JLM	BY	C K'D.	1
REV. 061955	1	3/18/96	DESCRIPTION	JMA	JLM	BY	C K'D.	1
REV. 061955	1	3/18/96	DATE	JMA	JLM	BY	C K'D.	1
REV. 061955	1	3/18/96	DESCRIPTION	JMA	JLM	BY	C K'D.	1
REV. 061955	1	3/18/96	DATE	JMA	JLM	BY	C K'D.	1
REV. 061955	1	3/18/96	DESCRIPTION	JMA	JLM	BY	C K'D.	1
REV. 061955	1	3/18/96	DATE	JMA	JLM	BY	C K'D.	1
REV. 061955	1	3/18/96	DESCRIPTION	JMA	JLM	BY	C K'D.	1
REV. 061955	1	3/18/96	DATE	JMA	JLM	BY	C K'D.	1
REV. 061955	1	3/18/96	DESCRIPTION	JMA	JLM	BY	C K'D.	1
REV. 061955	1	3/18/96	DATE	JMA	JLM	BY	C K'D.	1
REV. 061955	1	3/18/96	DESCRIPTION	JMA	JLM	BY	C K'D.	1
REV. 061955	1	3/18/96	DATE	JMA	JLM	BY	C K'D.	1
REV. 061955	1	3/18/96	DESCRIPTION	JMA	JLM	BY	C K'D.	1
REV. 061955	1	3/18/96	DATE	JMA	JLM	BY	C K'D.	1
REV. 061955	1	3/18/96	DESCRIPTION	JMA	JLM	BY	C K'D.	1
REV. 061955	1	3/18/96	DATE	JMA	JLM	BY	C K'D.	1
REV. 061955	1	3/18/96	DESCRIPTION	JMA	JLM	BY	C K'D.	1
REV. 061955	1	3/18/96	DATE	JMA	JLM	BY	C K'D.	1
REV. 061955	1	3/18/96	DESCRIPTION	JMA	JLM	BY	C K'D.	1
REV. 061955	1	3/18/96	DATE	JMA	JLM	BY	C K'D.	1
REV. 061955	1	3/18/96	DESCRIPTION	JMA	JLM	BY	C K'D.	1
REV. 061955	1	3/18/96	DATE	JMA	JLM	BY	C K'D.	1
REV. 061955	1	3/18/96	DESCRIPTION	JMA	JLM	BY	C K'D.	1
REV. 061955	1	3/18/96	DATE	JMA	JLM	BY	C K'D.	1
REV. 061955	1	3/18/96	DESCRIPTION	JMA	JLM	BY	C K'D.	1
REV. 061955	1	3/18/96	DATE	JMA	JLM	BY	C K'D.	1
REV. 061955	1	3/18/96	DESCRIPTION	JMA	JLM	BY	C K'D.	1
REV. 061955	1	3/18/96	DATE	JMA	JLM	BY	C K'D.	1
REV. 061955	1	3/18/96	DESCRIPTION	JMA	JLM	BY	C K'D.	1
REV. 061955	1	3/18/96	DATE	JMA	JLM	BY	C K'D.	1
REV. 061955	1	3/18/96	DESCRIPTION	JMA	JLM	BY	C K'D.	1
REV. 061955	1	3/18/96	DATE	JMA	JLM	BY	C K'D.	1
REV. 061955	1	3/18/96	DESCRIPTION					