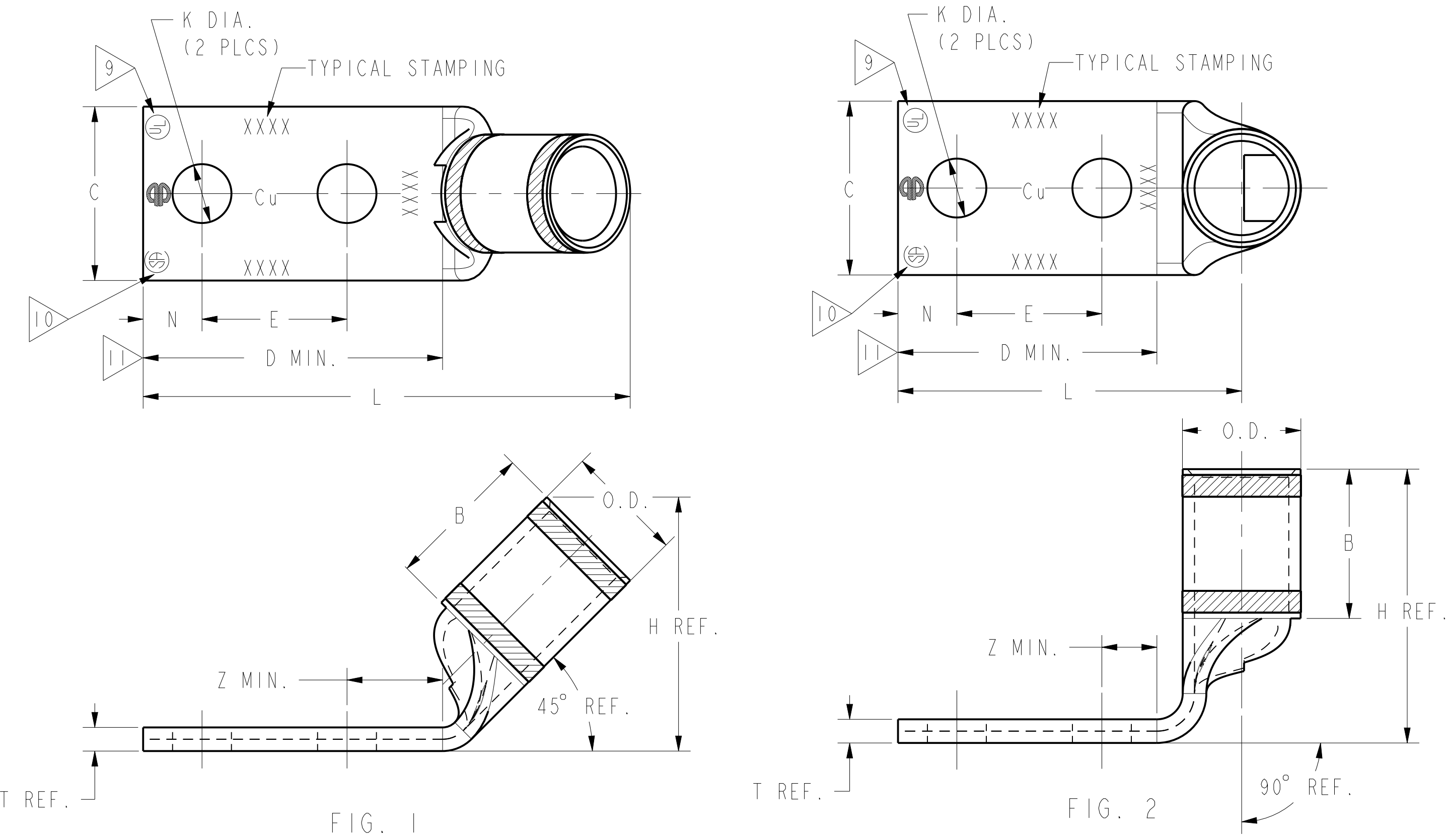


DRAWING NO. SE209512	7			6		5		4				3		2		1													
	CATALOG NUMBER	STRANDED COPPER CONDUCTOR ACCOMMODATED CODE (AWG)	NAVY METRIC SIZE (CLASS 2)	BOLT SIZE	METRIC BOLT SIZE	FIG. NO.	DIMENSIONS									REV	DATE	DESCRIPTION	ECO	BY	C.H.K.								
							B	C	E	H REF	K DIA	L	N	O.D.	T REF	Z MIN													
YA4CL2TC1045	#4 AWG	40	-----	#10	M5	1	.81 [21]	.50 [13]	.62 [16]	1.02 [26]	.21 [5]	2.14 [54]	.25 [6]	.34 [9]	.09 [2]	.27 [7]	CONNECTIONER SIZE	TOLERANCES											
YA4CL2TC1090						2																B	C	E	K DIA	L	N	O.D.	
YA4CL2TC10E245						1																							
YA4CL2TC10E290						2																							
YA4CL2L45						1																							
YA4CL2L90				2																									
YA4CL2TC1445				1/4	M6	1																							
YA4CL2TC1490						2																							
YA4CL2TC14E245						1																							
YA4CL2TC14E290						2																							
YA4CL2TC14E290	2																												

CONNECTIONER SIZE	B	C	E	K DIA	L	N	O.D.
-8C THRU -25	±.06	±.04	±.02	±.02	±.09	±.03	±.01
-26 THRU -34	±.08	±.04	±.02	±.02	±.12	±.03	±.01
-35 AND UP	±.09	±.06	±.02	±.02	±.15	±.06	±.01

TOLERANCE BLOCK

INSTALLATION TOOLING (# CRIMPS)																		
CATALOG NO.	COLOR CODE	DIE INFORMATION			MECHANICAL						HYDRAULIC						DIELESS (# CRIMPS)	WIRE STRIP LENGTH
		DIE INDEX	TYPE	YIMRTC	OUR840	MD6 MD7	MD6--R2 MD7-34R	PATMD6 PAT600	BCT500 YCT500	Y34A Y34B Y34BH	Y35, Y39 Y750, BAT35 PAT750	Y46 PAT46	Y45	Y48B	Y60BHU			
YA4C - SERIES	GRAY	8 346	GRAY DIE SET	GRAY (2)	X4CRT(1)	W4CRT(1) W4CVT(1)	W4CRT(1) W4CVT(1)	W4CRT(1) W4CVT(1)	X4CRT(1) W4CRT(1) W4CVT(1)	-----	U4CRT(1) U6CABT(1)	U4CRT(1) U6CABT(1)	U4CRT(1) U6CABT(1)	-----	-----	MECHANICAL: MY29-3(1) MY29-11(1) MRC840(1) HYDRAULIC, Y644(1) Y81KFT(1) Y4PC834(1)	7/8"	
			NEST INDENTOR	-----	-----	-----	-----	-----	-----	B4CD(1) A4CD(1) Y34PR	U4CD-1(1) Y34PR	U4CD-1(1) Y34PR	U4CD-1(1) Y34PR					



- NOTES:
- MATERIAL: COPPER TUBING.
  - FINISH: ELECTRO-TIN PLATED. FOR NICKEL PLATING ADD NK SUFFIX TO THE END OF CATALOG NUMBER.
  - CATALOG# PT6515 ADAPTOR IS REQUIRED TO USE "U" DIES IN Y45 SERIES TOOLS.
  - CATALOG# PUADP-1 ADAPTOR IS REQUIRED TO USE "U" DIES IN Y46 SERIES TOOLS.
  - Y35P3 INDENTOR ADAPTOR REQUIRED FOR Y34PR INDENTOR.
  - PERMANENT DIE IN TOOLING.
  - DIMENSIONS IN BRACKETS [ ] ARE IN MILLIMETERS ROUNDED OFF TO THE NEAREST MILLIMETER, UNLESS OTHERWISE NOTED, AND ARE FOR REFERENCE ONLY.
  - FOR USE BY CUSTOMERS THAT HAVE THIS HYPRESS™. NO NEW Y34A HYPRESS™ TOOLS ARE BEING PROCESSED. Y34A USES A--D NEST DIES ONLY.
  - CONNECTORS ARE UL LISTED; UNDRILLED VERSIONS ARE NOT UL LISTED.
  - CONNECTORS ARE CSA CERTIFIED; UNDRILLED VERSIONS ARE NOT CSA CERTIFIED.
  - FOR UNDRILLED VERSIONS ADD SUFFIX "-U" TO END OF CATALOG NUMBER. FOR UNDRILLED VERSIONS, USE D MIN. = N MAX. + E MIN. + Z MIN.
  - "X", "W-RT", "W-VT", "U", & "L" DIE SETS ARE COLOR CODED. "A", "B", AND "C" DIES ARE NOT COLOR CODED. NESTS AND INDENTOR TYPE ARE NOT COLOR CODED.

TO ORDER BURNDY® PRODUCTS CALL  
 UNITED STATES  
 1-800-346-4175 (LONDONDERRY, NH)  
 CANADA:  
 1-800-361-6975 (QUEBEC)  
 1-800-387-6487 (ALL OTHER PROVINCES)  
 FOR PRODUCT INFO: <http://www.burndy.com>

REFERENCE: SD035209

COPPER HYLUG™

ITEM NO:	---
CAT. NO:	YA4C- (TABLE)
DRAWN BY:	J. MICHAUD 02/08/94
CHECKER:	D. FILLION 04/03/95
DSN APPVL:	C. PALAGI 03/05/95
MFG APPVL:	N/A
QA APPVL:	C. ACKERMAN 04/03/95
MKT APPVL:	T. NELSON 03/13/95
PROD FAM:	CM&R COMPRESSION
PROJECT #:	---
DOCUMENT TYPE:	Sales
REL LEVEL:	Released

SCALE: 1:1  
 DRAWING NO: SE209512  
 SHEET 8 OF 52

REV: PEO200