

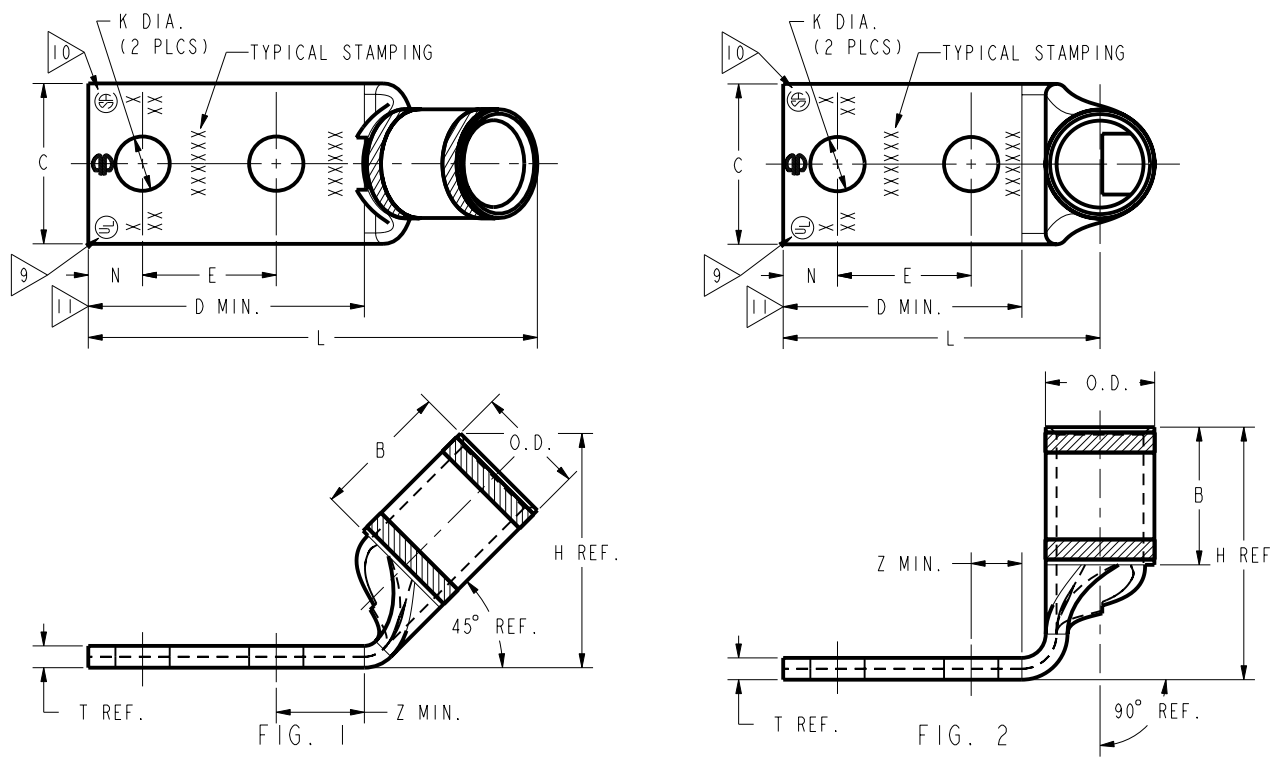
DRAWING NO. SE209512	7			6		5	4	3	2	1						
	STRANDED COPPER CONDUCTOR ACCOMMODATED			BOLT SIZE	METRIC BOLT SIZE	FIG. NO.	DIMENSIONS									
CATALOG NUMBER	CODE (AWG)	NAVY	METRIC SIZE (CLASS 2)				B	C	E	H REF	K DIA	L	N	O.D.	T REF	Z MIN
YA252L45	1/0 AWG	100	-----	5/16	M8	1	.88 [22]	.75 [19]	.88 [22]	1.10 [28]	.33 [8]	2.77 [80]	.34 [9]	.51 [13]	.12 [3]	.36 [9]
YA252L90						2	.88 [22]	.75 [19]	.88 [22]	1.20 [30]	.33 [8]	1.95 [50]	.34 [9]		.12 [3]	.36 [9]
YA25L2TC3845				3/8	M10	1	.88 [22]	.75 [19]	1.00 [25]	1.10 [28]	.40 [10]	3.02 [77]	.41 [10]	.12 [3]	.42 [11]	
YA25L2TC3890						2	.88 [22]	.75 [19]	1.00 [25]	1.20 [30]	.40 [10]	2.14 [54]	.41 [10]			
YA252LN45				1/2	M12	1	.83 [21]	.75 [19]	1.75 [44]	1.10 [28]	.56 [14]	4.20 [107]	.63 [16]	.11 [3]	.64 [16]	
YA252LN90						2	.88 [22]	.83 [21]	1.75 [44]	1.20 [30]	.56 [14]	3.38 [86]	.63 [16]			

REV	DATE	DESCRIPTION	ECO	BY	C'H'K.
C	6/12/2010 10:00:00 AM	REDRAWN IN PROE	20979	DK	MA

CONNECTOR SIZE	TOLERANCES						
	B	C	E	K DIA	L	N	O.D.
-8C THRU -25	±.06	±.04 ±.02	±.02	±.02	±.09	±.03	±.01
-26 THRU -34	±.08	±.04 ±.02	±.02	±.02	±.12	±.03	±.01
-35 AND UP	±.09	±.06	±.02	±.02	±.15	±.06	±.01

TOLERANCE BLOCK

CATALOG NO.	COLOR CODE	DIE INFORMATION		MECHANICAL							HYDRAULIC				DIELESS (# CRIMPS)	WIRE STRIP LENGTH	
		DIE INDEX	TYPE	Y2MR	OUR840	MD6 MD7	MD6--R2	MD7-34R	Y500CT BCT500 PAT600	Y34A Y34B Y34BH	Y35, Y39 Y750, BAT35 BAT750, PAT750	Y46	Y45	Y48B			Y60BHU
YA252L45 YA252L90 YA25L2TC3845 YA25L2TC3890 YA252LN45 YA252LN90	PINK	12 348	PINK DIE SET NEST INDENTOR	-----	X25RT(2)	W25RT(2) W25VT(2)	W25RT(2) W25VT(2)	W25RT(2) W25VT(2)	X25RT(2) W25RT(2) W25VT(2)	A25R(1)	U25RT(1) U2CABT(1)	U25RT(1) U2CABT(1)	U25RT(1) U2CABT(1)	-----	-----	MECHANICAL: MY29-3(1) MY29-11(1) HYDRAULIC, Y644M(1) BAT644M(1) PAT644M(1)	15/16"



- NOTES:
- MATERIAL: COPPER TUBING.
 - FINISH: TIN PLATED.
 - CATALOG # PT6515 ADAPTOR IS REQUIRED TO USE "U" DIES IN Y45 SERIES TOOLS.
 - CATALOG # PUADP-1 ADAPTOR IS REQUIRED TO USE "U" DIES IN Y46 SERIES TOOLS.
 - Y35P3 INDENTOR ADAPTOR REQUIRED FOR Y34PR INDENTOR.
 - PERMANENT DIE IN TOOLING.
 - DIMENSIONS IN BRACKETS [] ARE IN MILLIMETERS ROUNDED OFF TO THE NEAREST MILLIMETER, UNLESS OTHERWISE NOTED, AND ARE FOR REFERENCE ONLY.
 - FOR USE BY CUSTOMERS THAT HAVE THIS HYPRESS™. NO NEW Y34A HYPRESS™ TOOLS ARE BEING PROCESSED. Y34A USES A--D NEST DIES ONLY.
 - CONNECTORS ARE UL LISTED, UNDRILLED VERSIONS ARE NOT UL LISTED.
 - CONNECTORS ARE CSA CERTIFIED, UNDRILLED VERSIONS ARE NOT CSA CERTIFIED.
 - FOR UNDRILLED VERSIONS ADD SUFFIX "-U" TO END OF CATALOG NUMBER. FOR UNDRILLED VERSIONS, USE D MIN. = N MAX. + E MIN. + Z MIN.
 - "X", "W-RT", "W-VT", "U", & "L" DIE SETS ARE COLOR CODED. "A", "B", AND "C" DIES ARE NOT COLOR CODED. NESTS AND INDENTOR TYPE ARE NOT COLOR CODED.

TO ORDER BURNDY® PRODUCTS CALL
 UNITED STATES
 1-800-346-4175 (LONDONDERRY, NH)
 CANADA:
 1-800-361-6975 (QUEBEC)
 1-800-387-6487 (ALL OTHER PROVINCES)
 FOR PRODUCT INFO: <http://www.burndy.com>

REFERENCE: SD035209

COPPER HYLUG™

ITEM NO:	--
CAT. NO:	YA25-2L-45, -90, YA25L-2TC38-45, -90, YA25-2LN-45, -90
DRAWN BY:	R.NARESH 04/07/05
CHECKER:	K.BABU 04/07/05
DSN APPVL:	--
MFG APPVL:	N/A
QA APPVL:	--
MKT APPVL:	--
PROJ #:	--
DOCUMENT TYPE:	Sales
REL LEVEL:	Released

SCALE: 3:2

DRAWING NO	REV
SE209512	C
SHEET 18 OF 52	

REV: PE0200