

DRAWING NO.
SE209512

CATALOG NUMBER	STRANDED COPPER CONDUCTOR ACCOMMODATED			BOLT SIZE	METRIC BOLT SIZE	FIG. NO.	DIMENSIONS									
	CODE (AWG)	NAVY	METRIC SIZE (CLASS 2)				B	C	E	H REF	K DIA	L	N	O.D.	T REF	Z MIN
YA34L2TC1245	500 kcmil	-----	240mm ² STR [23.1]	1/2	M12	1	1.27 [32]	1.55 [39]	1.25 [32]	2.25 [57]	.53 [13]	4.31 [109]	.53 [13]	1.06 [27]	.23 [6]	.55 [14]
2						1.25 [32]	2.43 [62]	.53 [13]	3.04 [77]	.53 [13]	.55 [14]					
1						1.75 [44]	2.25 [57]	.56 [14]	5.00 [127]	.63 [16]	.64 [16]					
2						1.27 [32]	1.55 [39]	1.75 [44]	2.43 [62]	.56 [14]	3.73 [95]	.63 [16]	1.06 [27]	.23 [6]	.64 [16]	

REV	DATE	DESCRIPTION	ECO	BY	C'H'K.
C	6/12/2010 10:00:00 AM	REDRAWN IN PROE	20979	DK	MA

CONNECTOR SIZE	TOLERANCES						
	B	C	E	K DIA	L	N	O.D.
-8C THRU -25	±.06	±.04 ±.02	±.02	±.02	±.09	±.03	±.01
-26 THRU -34	±.08	±.04 ±.02	±.02	±.02	±.12	±.03	±.01
-35 AND UP	±.09	±.06	±.02	±.02	±.15	±.06	±.01

TOLERANCE BLOCK

CATALOG NO.	COLOR CODE	DIE INFORMATION		MECHANICAL RATCHET						HYDRAULIC						DIELESS (# CRIMPS)	WIRE STRIP LENGTH
		DIE INDEX	TYPE	6-Y2MR	OUR840	MD6 MD7	MD6--R2 BAT500	MD7-34R	8-Y34A Y34B Y34BH	5-Y35, Y39 Y750, BAT35 BAT750	5-4-Y46	5-3-Y45	Y48B	Y60BHU			
YA34L2TC1245 YA34L2TC1290 YA342LN45 YA342LN90	BROWN	20 299	BROWN DIE SET NEST INDENTOR	-----	-----	-----	W34RT(2) W34VT(2)	W34VT(2)	-----	U34RT(2) U31ART(2)	U34RT(2) P34RT(2) U31ART(2)	U34RT(2) U31ART(2)	C34R(1) C31AR(1)	L34RT(1)	HYDRAULIC, Y644M(1) BAT644M(1)	1-7/16"	
				-----	-----	-----	-----	-----	B34D(1) A34D(1) Y34PR	U34D-1(1) Y34PR	U34D-1(1) Y34PR	U34D-1(1) Y34PR	C34D(1) Y48PR	-----			

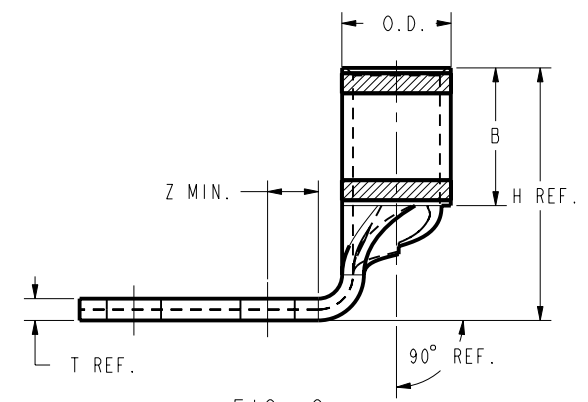
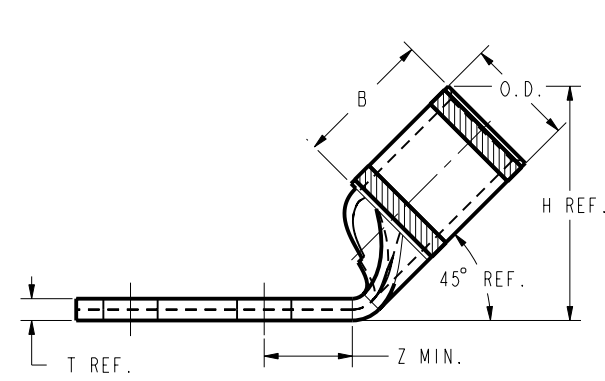
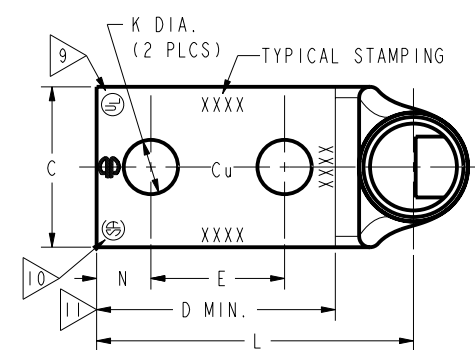
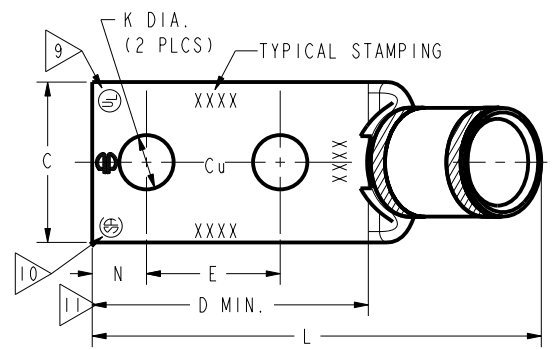


FIG. 1

FIG. 2

- NOTES:
- MATERIAL: COPPER TUBING.
 - FINISH: ELECTRO-TIN PLATED.
 - CATALOG # PT6515 ADAPTOR IS REQUIRED TO USE "U" DIES IN Y45 SERIES TOOLS.
 - CATALOG # PUADP-1 ADAPTOR IS REQUIRED TO USE "U" DIES IN Y46 SERIES TOOLS.
 - Y35P3 INDENTOR ADAPTOR REQUIRED FOR Y34PR INDENTOR.
 - PERMANENT DIE IN TOOLING.
 - DIMENSIONS IN BRACKETS [] ARE IN MILLIMETERS ROUNDED OFF TO THE NEAREST MILLIMETER, UNLESS OTHERWISE NOTED, AND ARE FOR REFERENCE ONLY.
 - FOR USE BY CUSTOMERS THAT HAVE THIS HYPRESS™. NO NEW Y34A HYPRESS™ TOOLS ARE BEING PROCESSED. Y34A USES A--D NEST DIES ONLY.
 - CONNECTORS ARE UL LISTED, UNDRILLED VERSIONS ARE NOT UL LISTED.
 - CONNECTORS ARE CSA CERTIFIED, UNDRILLED VERSIONS ARE NOT CSA CERTIFIED.
 - FOR UNDRILLED VERSIONS ADD SUFFIX "-U" TO END OF CATALOG NUMBER. FOR UNDRILLED VERSIONS, USE D MIN. = N MAX. + E MIN. + Z MIN.
 - "X", "W-RT", "W-VT", "U", & "L" DIE SETS ARE COLOR CODED. "A", "B", AND "C" DIES ARE NOT COLOR CODED. NESTS AND INDENTOR TYPE ARE NOT COLOR CODED.

REFERENCE: SD035209

TO ORDER BURNDY® PRODUCTS CALL		COPPER HYLUG™	
UNITED STATES 1-800-346-4175 (LONDONDERRY, NH)		ITEM NO: --	SCALE: 3:2
CANADA: 1-800-361-6975 (QUEBEC) 1-800-387-6487 (ALL OTHER PROVINCES)		CAT. NO: YA-L-2TC-45-90/YA--2L-45-90, YA--2LN-45-90/YA-4L-45-90	REV: C
FOR PRODUCT INFO: http://www.burndy.com		DRAWN BY: J. MICHAUD 02/03/95	PROJECT #:
		CHECKER: D. FILLION 02/21/95	SIZE: D
		DSN APPVL: C. PALAGI 03/09/95	DRAWING NO: SE209512
		MFG APPVL: N/A	SHEET 33 OF 52
		QA APPVL: C. ACKERMAN 04/03/95	
		MKT APPVL: T. NELSON 03/13/95	
		PROJ APPVL: --	
		REL LEVEL: Released	

REV: PE0200