

DRAWING NO.  
SE209512

CATALOG NUMBER	STRANDED COPPER CONDUCTOR ACCOMMODATED			BOLT SIZE	METRIC BOLT SIZE	FIG. NO.	DIMENSIONS									
	CODE (AWG)	NAVY	METRIC SIZE (CLASS 2)				B	C	E	H REF	K DIA	L	N	O.D.	T REF	Z MIN
YA6C2L45						1	.54	.45	.63	.77	.27	1.98	.25	.29	.08	.33
YA6C2L90	14					2	[14]	[11]	[16]	[20]	[7]	[50]	[6]	[7]	[2]	[8]
YA6C2TC14E45	14					1			.50	.77		1.91				
YA6C2TC14E90	14					2			[13]	[20]		[49]				
YA6C2TC1445						1			.63	.77		2.04				
YA6C2TC1490	14					2			[16]	[20]		[52]				
YA6C2TC14E245						1	.54	.45	.75	.77		2.16		.08		
YA6C2TC14E290	14					2	[14]	[11]	[19]	[20]		[55]		[2]		

REV	DATE	DESCRIPTION	ECO	BY	C'H'K.
G	07/15/2015 00:00:00 AM	NOTE #14 ADDED	40945	RG	BSB

CONNECTOR SIZE	TOLERANCES						
	B	C	E	K DIA	L	N	O.D.
-8C THRU -25	±.06	±.04	±.02	±.02	±.09	±.03	±.01
-26 THRU -34	±.08	±.04	±.02	±.02	±.12	±.03	±.01
-35 AND UP	±.09	±.06	±.02	±.02	±.15	±.06	±.01

TOLERANCE BLOCK

INSTALLATION TOOLING (# CRIMPS)

CATALOG NO.	COLOR CODE	DIE INFORMATION		MECHANICAL					HYDRAULIC					DIELESS (# CRIMPS)	WIRE STRIP LENGTH	
		DIE INDEX	TYPE	6 YIMRTC Y122CMR	OUR840	MD6 MD7	MD6--R2 MD7-34R	PATMD6 PAT600	8 Y34A Y34B Y34BH	5 Y35, Y39 Y750 PAT750	5 4 Y46 PAT46	5 3 Y45	Y48B			Y60BHU
AS SHOWN ABOVE	BLUE	7 374	BLUE DIE SET NEST INDENTOR	BLUE (1)	X5CRT(1) X8CABT(1)	W5CRT(1) W5CVT(1)	W5CRT(1) W5CVT(1)	W5CRT(1) W5CVT(1)	-----	U5CRT(1) U8CABT(1)	U5CRT(1) U8CABT(1)	U5CRT(1) U8CABT(1)	-----	-----	MECHANICAL: MY29-3(1) MY29-11(1) MRC840(1) HYDRAULIC Y644(1) 13 Y81KFT(1) Y4PC834(1):	5/8"

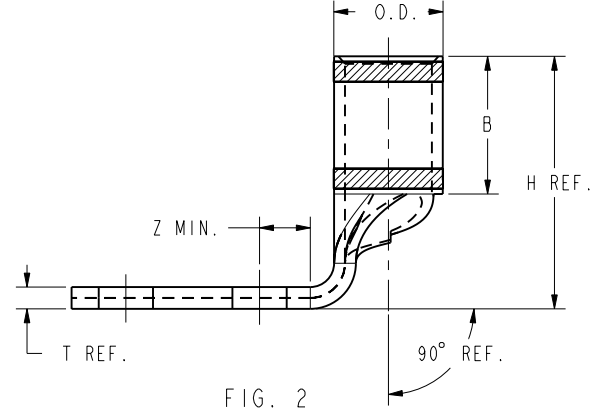
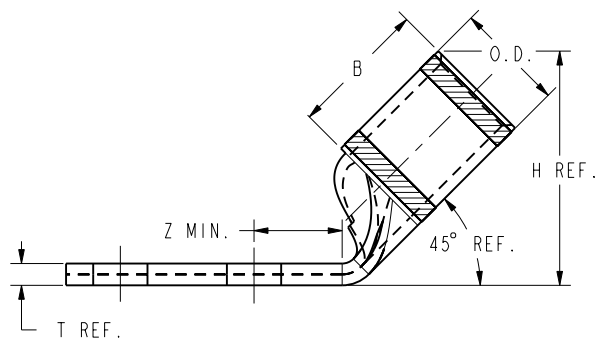
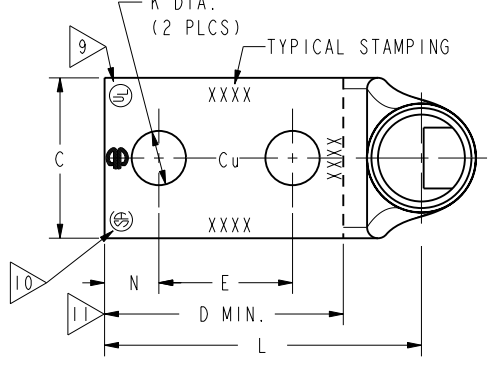
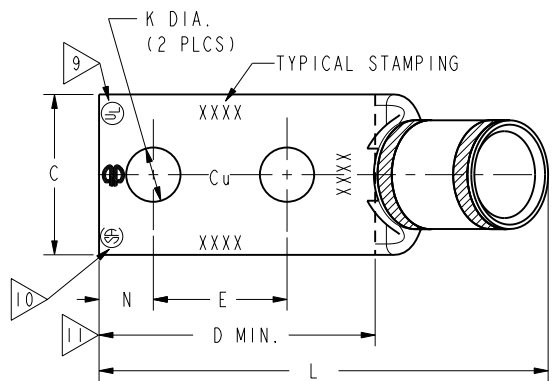


FIG. 1

FIG. 2

REFERENCE: SD035209

NOTES:

- MATERIAL: COPPER TUBING.
- FINISH: ELECTRO-TIN PLATED.
- CATALOG# PT6515 ADAPTOR IS REQUIRED TO USE "U" DIES IN Y45 SERIES TOOLS.
- CATALOG# PUADP-1 ADAPTOR IS REQUIRED TO USE "U" DIES IN Y46 SERIES TOOLS.
- Y35P3 INDENTOR ADAPTOR REQUIRED FOR Y34PR INDENTOR.
- PERMANENT DIE IN TOOLING.
- DIMENSIONS IN BRACKETS [ ] ARE IN MILLIMETERS ROUNDED OFF TO THE NEAREST MILLIMETER, UNLESS OTHERWISE NOTED, AND ARE FOR REFERENCE ONLY.
- FOR USE BY CUSTOMERS THAT HAVE THIS HYPRESS™. NO NEW Y34A HYPRESS™ TOOLS ARE BEING PROCESSED. Y34A USES A--D NEST DIES ONLY.
- CONNECTORS ARE UL LISTED; UNDRILLED VERSIONS ARE NOT UL LISTED.
- CONNECTORS ARE CSA CERTIFIED; UNDRILLED VERSIONS ARE NOT CSA CERTIFIED.
- FOR UNDRILLED VERSIONS ADD SUFFIX "-U" TO END OF CATALOG NUMBER. FOR UNDRILLED VERSIONS, USE D MIN. = N MAX. + E MIN. + Z MIN.
- "X", "W-RT", "W-VT", "U", & "L" DIE SETS ARE COLOR CODED. "A", "B", AND "C" DIES ARE NOT COLOR CODED. NESTS AND INDENTOR TYPE ARE NOT COLOR CODED.
- DO NOT USE PAT644 OR Y644 TOOLING WITH 6 AWG SOL.
- THESE CATALOG NUMBERS CANNOT BE INSTALLED WITH Y46 TOOLING.

TO ORDER BURNDY® PRODUCTS CALL  
 UNITED STATES  
 1-800-346-4175 (LONDONDERRY, NH)  
 CANADA:  
 1-800-361-6975 (QUEBEC)  
 1-800-387-6487 (ALL OTHER PROVINCES)  
 FOR PRODUCT INFO: <http://www.burndy.com>

COPPER HYLUG™	
ITEM NO:	--
CAT. NO:	YA6C- & YA6CL- (TABLE)
DRAWN BY:	J. MICHAUD 02/03/95
CHECKER:	D. FILLION 02/21/95
DSN APPVL:	C. PALAGI 03/09/95
MFG APPVL:	N/A --
QA APPVL:	C. ACKERMAN 04/03/95
MKT APPVL:	T. NELSON 03/13/95
PROD FAM:	CM&R COMPRESSION
PROJECT #:	--
DOCUMENT TYPE:	Sales
REL LEVEL:	Released

SCALE: 1:1  
 DRAWING NO: SE209512  
 SHEET 4 OF 52  
 REV: G

REV: PE0200