

DRAWING NO.  
SE209512

CATALOG NUMBER	STRANDED COPPER CONDUCTOR ACCOMMODATED			BOLT SIZE	METRIC BOLT SIZE	FIG. NO.	DIMENSIONS									
	CODE (AWG)	NAVY	METRIC SIZE (CLASS 2)				B	C	E	H REF	K DIA	L	N	O.D.	T REF	Z MIN
YA6CL2TC14E145	#6 STR #6 SOL	-----	-----	1/4	M6	1	.54 [14]	.45 [11]	1.00 [25]	.77 [20]	.27 [7]	2.41 [61]	.31 [8]	.29 [7]	.08 [2]	.33 [8]
YA6CL2TC14E190						2	.45 [11]	.91 [23]	.27 [7]	1.88 [48]	.31 [8]	.08 [2]	.33 [8]			
YA6CL2TC51645				5/16	-----	1	.52 [13]	.77 [20]	.33 [8]	2.45 [62]	.34 [9]	.07 [2]	.36 [9]			
YA6CL2TC51690						2	.52 [13]	1.00 [25]	.89 [21]	.33 [8]	1.94 [49]	.34 [9]	.07 [2]	.36 [9]		
YA6CL2TC516E245				5/16	-----	1	.52 [13]	.75 [19]	.77 [20]	.33 [8]	2.20 [56]	.34 [9]	.07 [2]	.36 [9]		
YA6CL2TC516E290						2	.54 [14]	.52 [13]	.75 [19]	.89 [21]	.33 [8]	1.69 [43]	.34 [9]	.07 [2]	.36 [9]	

REV	DATE	DESCRIPTION	ECO	BY	C'H'K.
G	07/15/2015 00:00:00 AM	NOTE #14 ADDED	40944	RG	BSB

CONNECTOR SIZE	TOLERANCES						
	B	C	E	K DIA	L	N	O.D.
-8C THRU -25	±.06	±.04	±.02	±.02	±.09	±.03	±.01
-26 THRU -34	±.08	±.04	±.02	±.02	±.12	±.03	±.01
-35 AND UP	±.09	±.06	±.02	±.02	±.15	±.06	±.01

TOLERANCE BLOCK

INSTALLATION TOOLING (# CRIMPS)

CATALOG NO.	COLOR CODE	DIE INFORMATION		MECHANICAL					HYDRAULIC					DIELESS (# CRIMPS)	WIRE STRIP LENGTH	
		DIE INDEX	TYPE	YIMRTC Y122CMR	OUR840	MD6 MD7	MD6--R2 MD7-34R	PATMD6 PAT600	Y34A Y34B Y34BH	Y35, Y39 Y750 PAT750	Y46 PAT46	Y45	Y48B			Y60BHU
YA6CL2TC14E145 YA6CL2TC14E190 YA6CL2TC51645 YA6CL2TC51690 YA6CL2TC516E245 YA6CL2TC516E290	BLUE	7 374	BLUE DIE SET NEST INDENTOR	BLUE (1)	X5CRT(1) X8CABT(1)	W5CRT(1) W5CVT(1)	W5CRT(1) W5CVT(1)	W5CRT(1) W5CVT(1)	----- B6CD(1) A6CD(1) Y34PR	U5CRT(1) U8CABT(1) U6CD-1(1) Y34PR	U5CRT(1) U8CABT(1) U6CD-1(1) Y34PR	U5CRT(1) U8CABT(1) U6CD-1(1) Y34PR	----- Y48B	----- Y60BHU	MECHANICAL: MY29-3(1) MY29-11(1) MRC840(1) HYDRAULIC: Y644(1) Y81KFT(1) Y4PC834(1)	5/8"

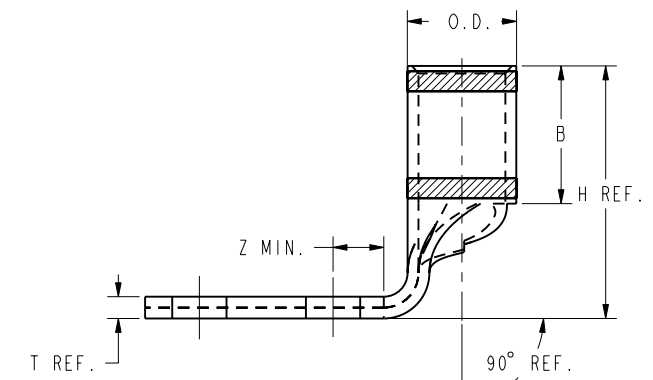
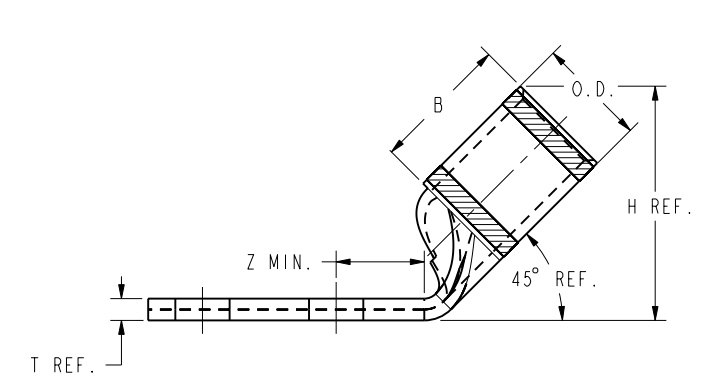
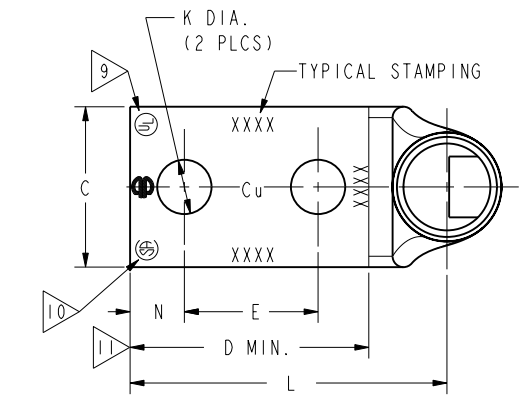
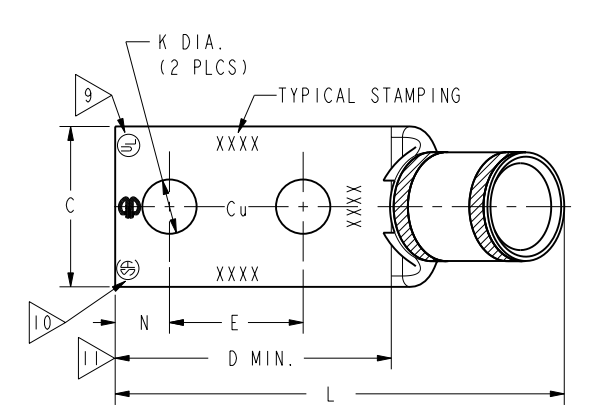


FIG. 1

FIG. 2

REFERENCE: SD035209

NOTES:

- MATERIAL: COPPER TUBING.
- FINISH: ELECTRO-TIN PLATED.
- CATALOG# PT6515 ADAPTOR IS REQUIRED TO USE "U" DIES IN Y45 SERIES TOOLS.
- CATALOG# PUADP-1 ADAPTOR IS REQUIRED TO USE "U" DIES IN Y46 SERIES TOOLS.
- Y35P3 INDENTOR ADAPTOR REQUIRED FOR Y34PR INDENTOR.
- PERMANENT DIE IN TOOLING.
- DIMENSIONS IN BRACKETS [ ] ARE IN MILLIMETERS ROUNDED OFF TO THE NEAREST MILLIMETER, UNLESS OTHERWISE NOTED, AND ARE FOR REFERENCE ONLY.
- FOR USE BY CUSTOMERS THAT HAVE THIS HYPRESS™. NO NEW Y34A HYPRESS™ TOOLS ARE BEING PROCESSED. Y34A USES A--D NEST DIES ONLY.
- CONNECTORS ARE UL LISTED; UNDRILLED VERSIONS ARE NOT UL LISTED.
- CONNECTORS ARE CSA CERTIFIED; UNDRILLED VERSIONS ARE NOT CSA CERTIFIED.
- FOR UNDRILLED VERSIONS ADD SUFFIX "-U" TO END OF CATALOG NUMBER. FOR UNDRILLED VERSIONS, USE D MIN. = N MAX. + E MIN. + Z MIN.
- "X", "W-RT", "W-VT", "U", & "L" DIE SETS ARE COLOR CODED. "A", "B", AND "C" DIES ARE NOT COLOR CODED. NESTS AND INDENTOR TYPE ARE NOT COLOR CODED.
- DO NOT USE PAT644 OR Y644 TOOLING WITH 6 AWG SOL.
- THESE CATALOG NUMBERS CANNOT BE INSTALLED WITH Y46 TOOLING.

TO ORDER BURNDY® PRODUCTS CALL  
UNITED STATES  
1-800-346-4175 (LONDONDERRY, NH)  
CANADA:  
1-800-361-6975 (QUEBEC)  
1-800-387-6487 (ALL OTHER PROVINCES)  
FOR PRODUCT INFO: <http://www.burndy.com>

COPPER HYLUG™	
ITEM NO: --	
CAT. NO: YA6CL-2TC- (TABLE)	
DRAWN BY: J. MICHAUD 02/03/95	
CHECKER: D. FILLION 02/21/95	
DSN APPVL: C. PALAGI 03/09/95	
MFG APPVL: N/A	
QA APPVL: C. ACKERMAN 04/03/95	
MKT APPVL: T. NELSON 03/13/95	
PROJ #: --	SCALE: 1:1
PROJ FAM: CM&R COMPRESSION	DRAWING NO
PROJECT #: --	REV
DOCUMENT TYPE: Sales	SE209512
REL LEVEL: Released	SHEET 5 OF 52

REV: PE0200