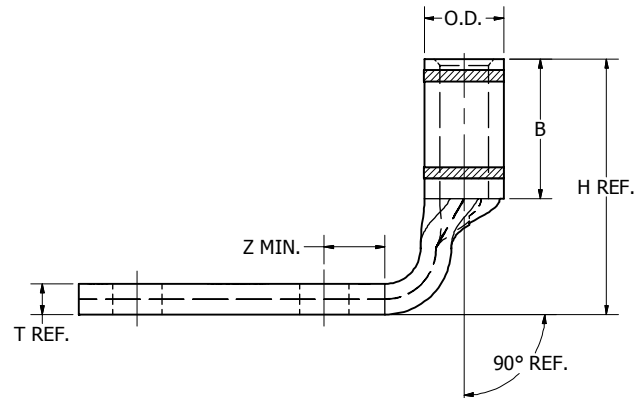
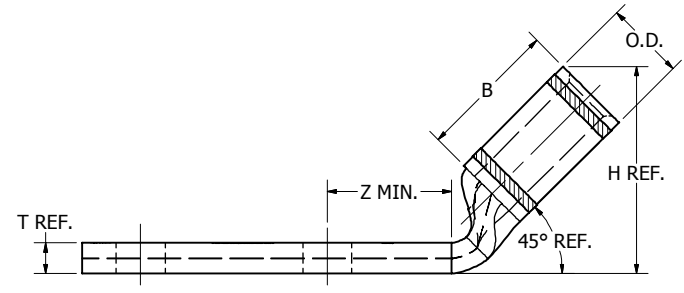
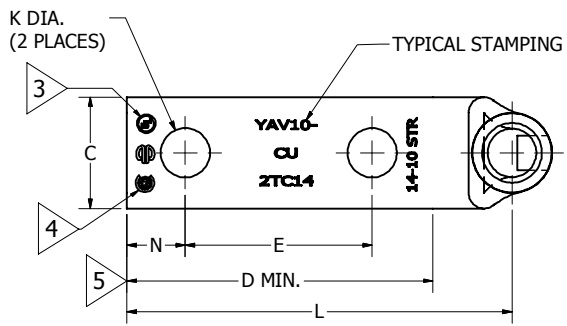
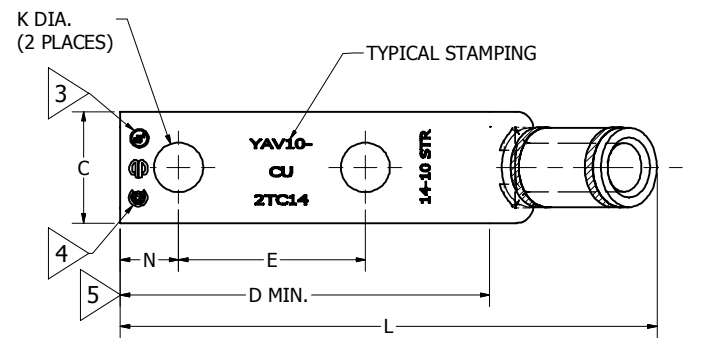


5 CATALOG NUMBER	STRANDED COPPER CONDUCTOR ACCOMMODATED			BOLT SIZE	METRIC BOLT SIZE	FIG. NO.	DIMENSIONS										INSTALLATION TOOLING (#CRIMPS)	WIRE STRIP LENGTH						
	CODE (AWG)	NAVY	METRIC SIZE (CLASS 2)				B	C	E	H REF.	K DIA.	L	N	O.D.	T REF.	Z MIN.								
YAV102TC445	#12 - #10 SOL & #14 - #10 STR	3-9	---	#4	---	1	.38 [10]	.30 [8]	.50 [13]	.55 [14]	.13 [3]	1.44 [37]	.16 [4]	.21 [5]	.08 [2]	.18 [5]	RATCHET: Y8MRB-1 MR8G98 (1) MR20 (1) MR89Q(1) MRE1022B(1) NON-RATCHET: Y10D Y14MV (1) Y10-22 (1)	7/16"						
YAV102TC490						2	.38 [10]	.30 [8]	.50 [13]	.68 [17]	.13 [3]	1.03 [26]	.16 [4]	.21 [5]	.08 [2]	.18 [5]								
YAV102TC845						#8	---	1	.38 [10]	.36 [9]	.63 [16]	.54 [14]	.18 [5]	1.64 [42]	.22 [6]	.21 [5]			.06 [2]	.24 [6]				
YAV102TC890								2	.38 [10]	.36 [9]	.63 [16]	.64 [16]	.18 [5]	1.27 [32]	.22 [6]	.21 [5]			.06 [2]	.24 [6]				
YAV102TC8E145				#8	---	1	.38 [10]	.36 [9]	1.00 [25]	.54 [14]	.18 [5]	2.01 [51]	.22 [6]	.21 [5]	.06 [2]	.24 [6]								
YAV102TC8E190						2	.38 [10]	.36 [9]	1.00 [25]	.64 [16]	.18 [5]	1.64 [42]	.22 [6]	.21 [5]	.06 [2]	.24 [6]								
YAV102TC1045				#10	---	#10	---	1	.38 [10]	.36 [9]	.63 [16]	.54 [14]	.21 [5]	1.70 [43]	.25 [6]	.21 [5]			.06 [2]	.27 [7]				
YAV102TC1090								2	.38 [10]	.36 [9]	.63 [16]	.64 [16]	.21 [5]	1.46 [37]	.25 [6]	.21 [5]			.06 [2]	.27 [7]				
YAV102TC10E245				#10	---	#10	---	1	.38 [10]	.36 [9]	.75 [19]	.54 [14]	.21 [5]	1.83 [46]	.25 [6]	.21 [5]			.06 [2]	.27 [7]				
YAV102TC10E290								2	.38 [10]	.36 [9]	.75 [19]	.64 [16]	.21 [5]	1.46 [37]	.25 [6]	.21 [5]			.06 [2]	.27 [7]				
YAV102TC1445				1/4	M6	#10	---	1	.38 [10]	.41 [10]	.63 [16]	.54 [14]	.27 [7]	1.81 [46]	.31 [8]	.21 [5]			.052 [1]	.34 [9]				
YAV102TC1490								2	.38 [10]	.41 [10]	.63 [16]	.62 [16]	.27 [7]	1.45 [37]	.31 [8]	.21 [5]			.052 [1]	.34 [9]				
YAV102TC14E245								1	.38 [10]	.41 [10]	.75 [19]	.54 [14]	.27 [7]	1.93 [49]	.31 [8]	.21 [5]			.052 [1]	.34 [9]				
YAV102TC14E290								2	.38 [10]	.41 [10]	.75 [19]	.62 [16]	.27 [7]	1.58 [40]	.31 [8]	.21 [5]			.052 [1]	.34 [9]				
YAV102TC14E145								1	.38 [10]	.41 [10]	1.00 [25]	.54 [14]	.27 [7]	2.18 [55]	.31 [8]	.21 [5]			.052 [1]	.34 [9]				
YAV102TC14E190								2	.38 [10]	.41 [10]	1.00 [25]	.62 [16]	.27 [7]	1.83 [46]	.31 [8]	.21 [5]			.052 [1]	.34 [9]				
YAV102TC14E945								1	.38 [10]	.41 [10]	.50 [13]	.54 [14]	.27 [7]	1.68 [43]	.31 [8]	.21 [5]			.052 [1]	.34 [9]				
YAV102TC14E990								2	.38 [10]	.41 [10]	.50 [13]	.62 [16]	.27 [7]	1.33 [34]	.31 [8]	.21 [5]			.052 [1]	.34 [9]				
YAV102TC3845								3/8	M10	#10	---	1	.38 [10]	.56 [14]	1.00 [25]	.54 [14]			.40 [10]	2.34 [59]	.41 [10]	.21 [5]	.04 [1]	.43 [11]
YAV102TC3890												2	.38 [10]	.56 [14]	1.00 [25]	.60 [15]			.40 [10]	2.00 [51]	.41 [10]	.21 [5]	.04 [1]	.43 [11]

TOLERANCES						
B	C	E	K DIA.	L	N	O.D.
±.04	±.04	±.02	±.02	±.06	±.03	±.01

TOLERANCE BLOCK



- NOTES:
- MATERIAL: COPPER TUBING.
 - FINISH: TIN PLATED.
 - CONNECTORS ARE UL LISTED: UNDRILLED VERSIONS ARE NOT UL LISTED.
 - CONNECTORS ARE CSA CERTIFIED: UNDRILLED VERSIONS ARE NOT CSA CERTIFIED.
 - FOR UNDRILLED VERSIONS ADD SUFFIX "-U" TO END OF CATALOG NUMBER. FOR UNDRILLED VERSIONS, USE D MIN. = N MAX. + EMIN. + Z MIN.
 - DIMENSIONS IN BRACKETS [] ARE IN MILLIMETERS ROUNDED OFF TO THE NEAREST MILLIMETER, UNLESS OTHERWISE NOTED, AND ARE FOR REFERENCE ONLY.

REFERENCE: SD035209 - SHEET 1

TO ORDER BURNDY PRODUCTS CALL		COPPER HYLUG™	
UNITED STATES 1-800-346-4175 (LONDONDERRY, NH)		ITEM NO: SEE TABLE	
CANADA: 1-800-361-6975 (QUEBEC) 1-800-387-6487 (ALL OTHER PROVINCES)		CAT. NO: YAV10-- (TABLE)	
FOR PRODUCT INFO: http://www.burndy.com		DRAWN BY: R.PERRAULT 2/23/1996 CHECKER: J.MICHAUD 2/23/1996 DSN APRVL: B.MACDONALD 2/23/1996 MFG APRVL: -- QA APRVL: D.VARIO 2/23/1996 MKT APRVL: G.SCHWEBLER 2/23/1996	
		PROD FAM: CM&R COMPRESSION PROJECT #: -- DOCUMENT TYPE: SALES REL LEVEL: Released	

REV	DATE	DESCRIPTION	ECO	BY	CHK.
A	6/15/2012	REDRAW AND UPDATE SALES DRAWING	27770	AD	MA