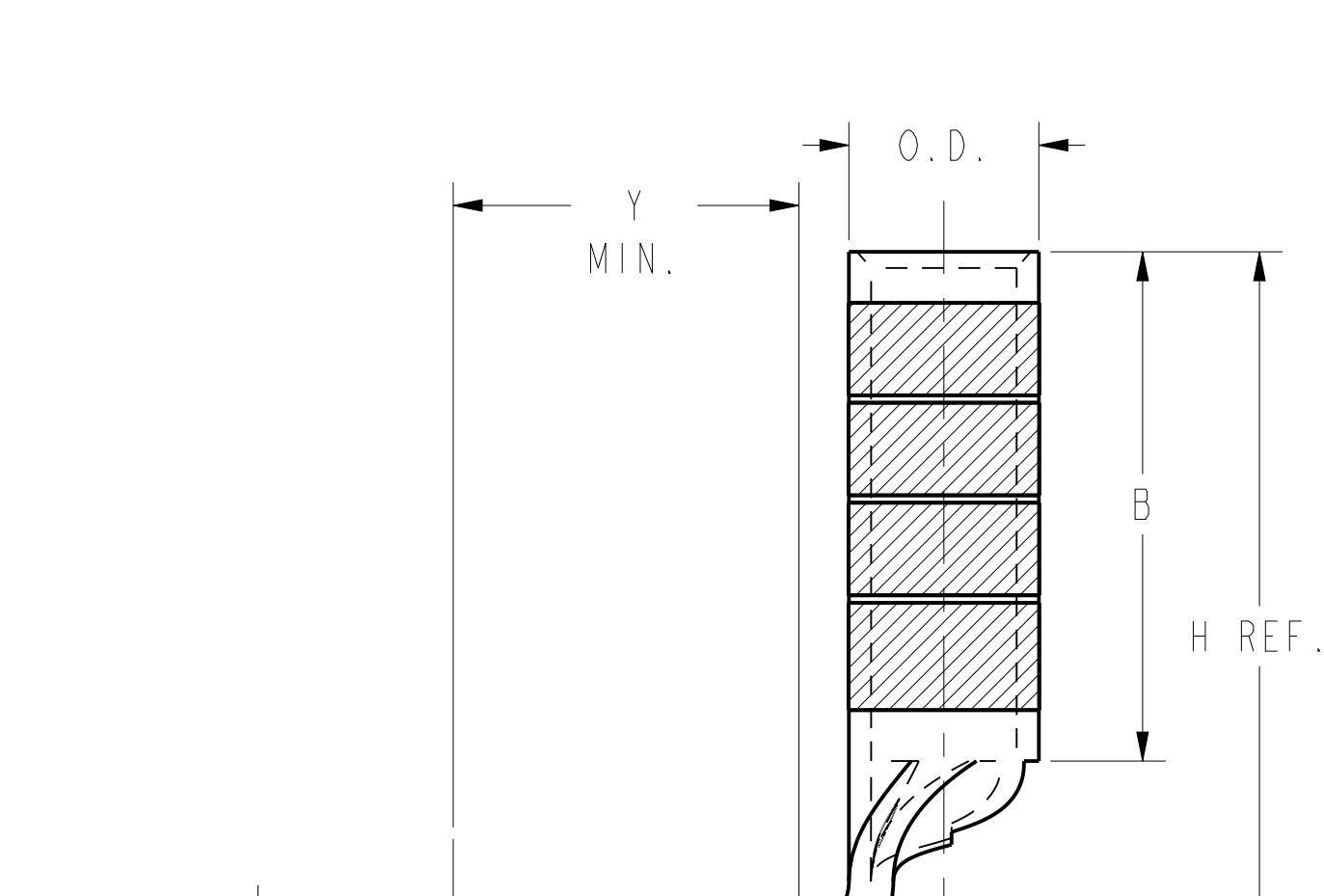
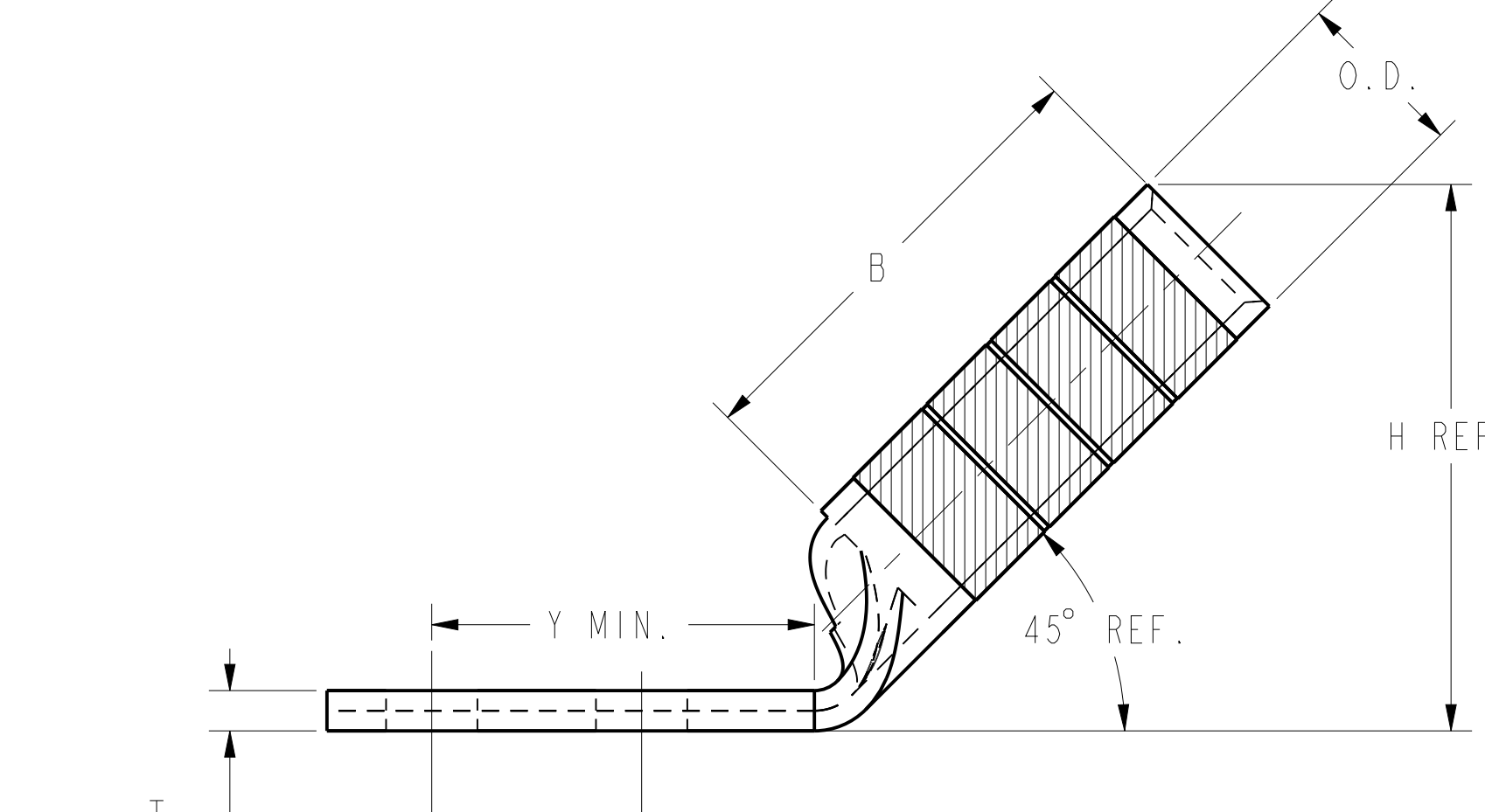
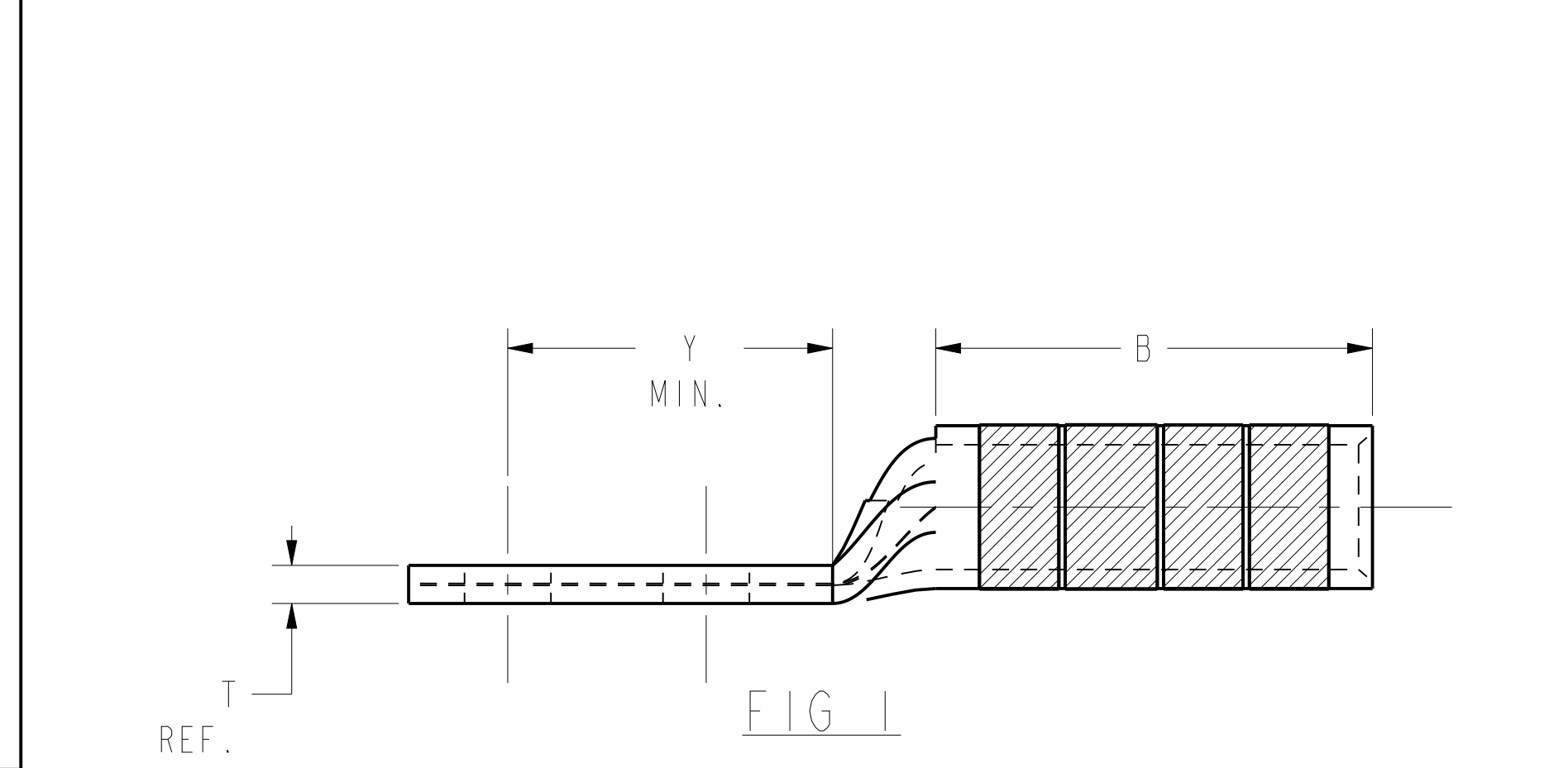
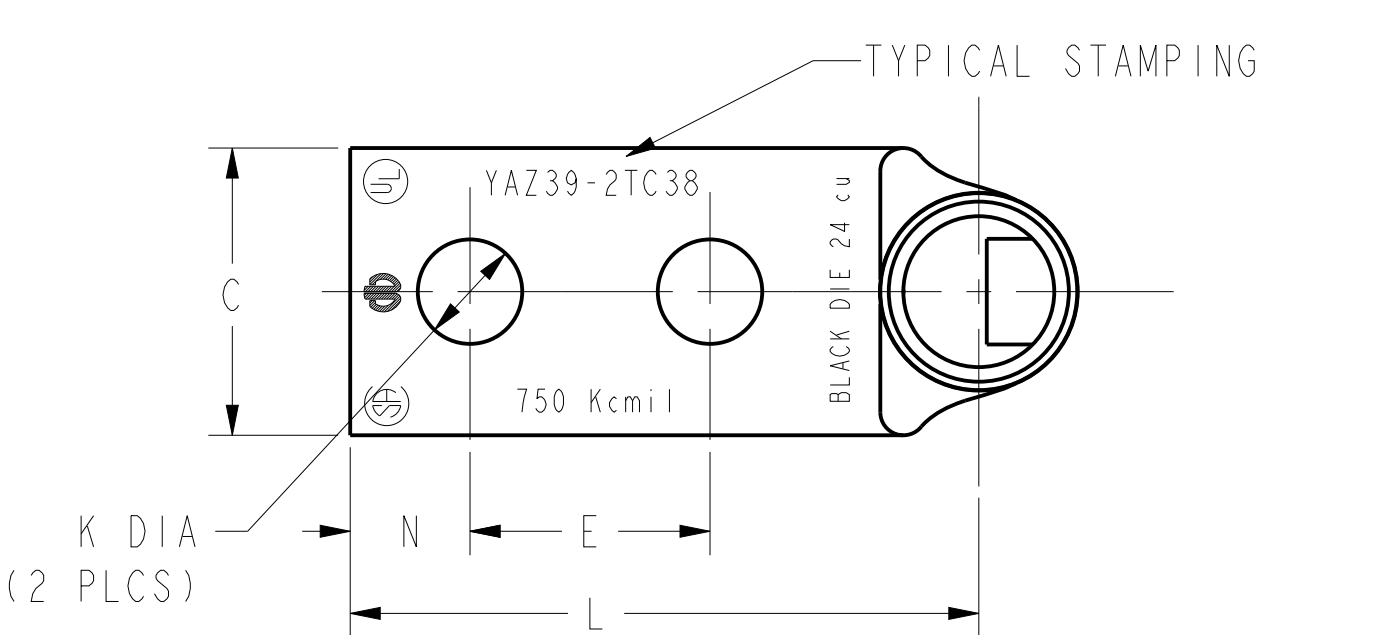
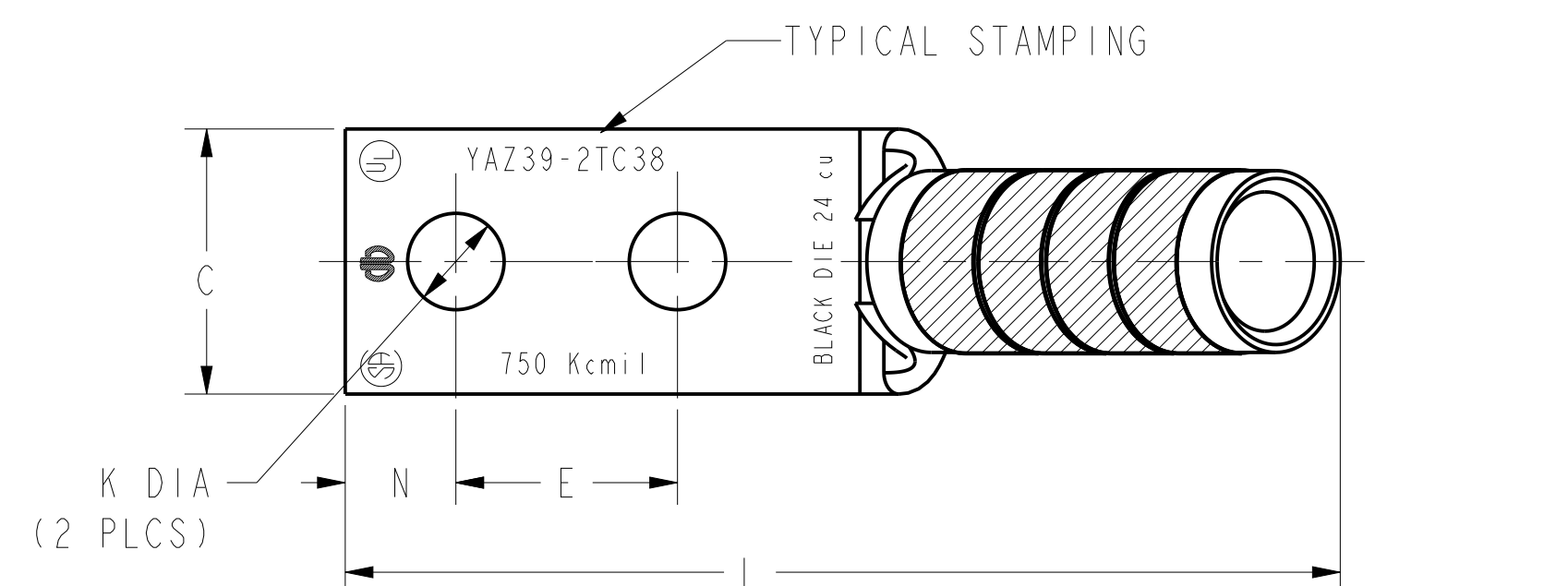
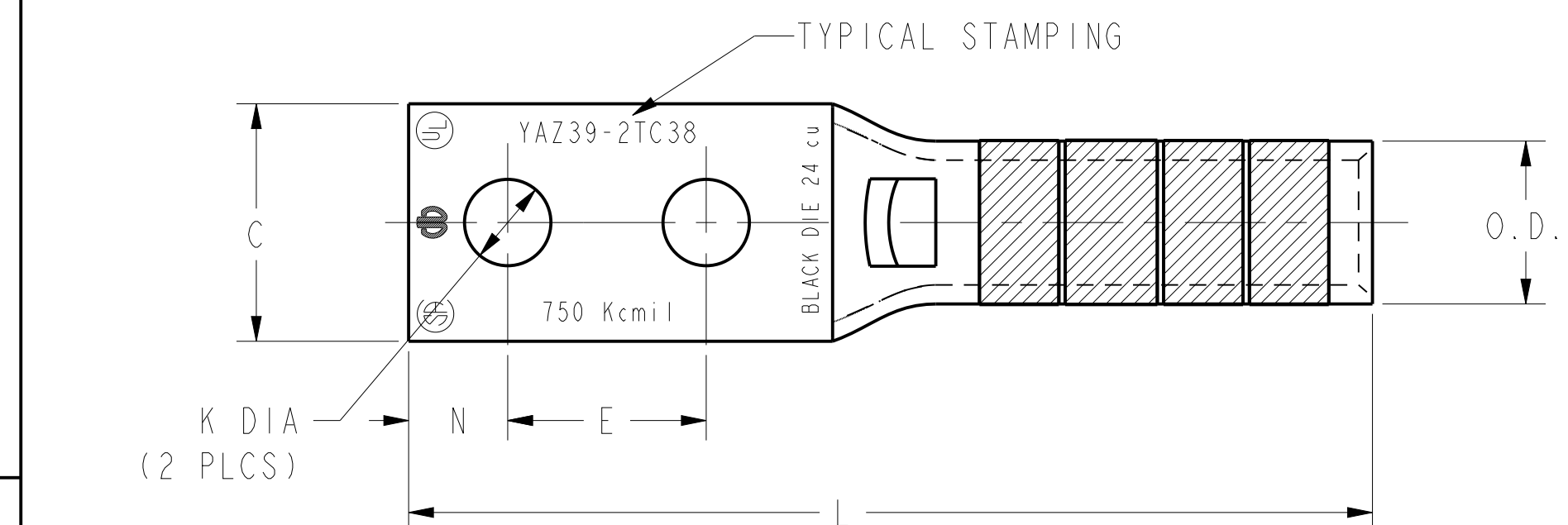


REV	DATE	DESCRIPTION	ECO	BY	C.H.K.
B	2020-02-18 00:00:00 EST	TABLE UPDATED	53044	SS	YR

CATALOG NO.	CONDUCTOR		BOLT SIZE	FIG. NO.	DIMENSIONS										INSTALLATION TOOLING (# CRIMPS)								
	CODE (AWG)	NAVY			B ±.09	C ±.06	E ±.02	H REF.	K DIA. ±.02	L ±.15	N ±.06	O.D. ±.01	T REF.	Y MIN.	DIE INDEX	COLOR CODE	HYDRAULIC					DIELESS (# CRIMPS)	WIRE STRIP LENGTH
																	Y750 Y35, BAT35 Y39, BAT750	Y46	Y45	Y48B	Y60B		
YAZ392NT38	750 Kcmil [----]	-----	3/8 [M10]	1	2.88 [73]	1.63 [41]	1.00 [25]	-----	.40 [10]	5.82 [148]	.50 [13]	1.30 [33]	.27 [7]	1.53 [39]	24	BLACK	U39RT (4)	U39RT (4)	U39RT (4)	C39R (2)	L39RT (2)	HYDRAULIC: Y644, Y644M Y644MBH, PAT644(1) Y444(1) PAT444(1) Y81KFT(3) PAT81KFT(3)	2-15/16
YAZ392NT3845				2	3.68 [93]		5.34 [136]																
YAZ392NT3890				3	4.27 [108]		2.87 [73]																
YAZ392TC38				1	-----		5.82 [148]																
YAZ392TC3845				2	1.91 [49]		3.68 [93]	5.34 [136]															
YAZ392TC3890				3	1.00 [25]		4.27 [108]	.40 [10]	2.87 [73]	.50 [13]													
YAZ392NNT				1	-----		6.82 [173]																
YAZ392NNT45				2	1.63 [41]		1.75 [44]	3.68 [93]	.56 [14]	6.34 [161]	.63 [16]	2.40 [61]											
YAZ392NNT90				3	4.27 [108]		3.87 [98]																
YAZ392ENNT	750 Kcmil [----]	-----	1/2 [M12]	1	2.88 [73]	1.30 [33]	-----	-----	6.82 [173]	1.30 [33]	.27 [7]	24	BLACK	U39RT (4)	U39RT (4)	U39RT (4)	C39R (2)	L39RT (2)	2-15/16				



- NOTES:
1. MATERIAL: COPPER TUBING.
  2. FINISH: TIN PLATED
  3. CATALOG # PT6515 ADAPTOR IS REQUIRED TO USE "U" DIES IN Y45 SERIES TOOLS.
  4. CATALOG # PUADP-1 ADAPTOR IS REQUIRED TO USE "U" DIES IN Y46 SERIES TOOLS.
  5. DIMENSIONS, METRIC WIRE, & METRIC BOLT SIZES IN BRACKETS [ ] ARE IN MILLIMETERS. DIMENSIONS ARE ROUNDED OFF TO THE NEAREST MILLIMETER, UNLESS OTHERWISE NOTED, AND ARE FOR REFERENCE ONLY.

TO ORDER BURNDY® PRODUCTS CALL		HYLUG™	
UNITED STATES 1-800-346-4175 (LONDONDERRY, NH)		ITEM NO: N/A	CAT. NO: YAZ39- (SEE TABLE)
CANADA: 1-800-361-6975 (QUEBEC) 1-800-387-6487 (ALL OTHER PROVINCES)		DRAWN BY: D. BOISVERT 11/12/98	CHECKER: K. HENRY 12/03/98
FOR PRODUCT INFO: <a href="http://www.burndy.com">http://www.burndy.com</a>		DSN APPVL: B. MACDONALD 12/02/98	MFG APPVL: N/A
		QA APPVL: S. GARY 11/30/98	MKT APPVL: B. HARDGROVE 11/25/98
		PROD FAM: --	SCALE: 4:1
		PROJECT #: FPN1906074	SIZE: D
		DOCUMENT TYPE: Sales	DRAWING NO: SE211915
		REL LEVEL: Released	SHEET 35 OF 36