



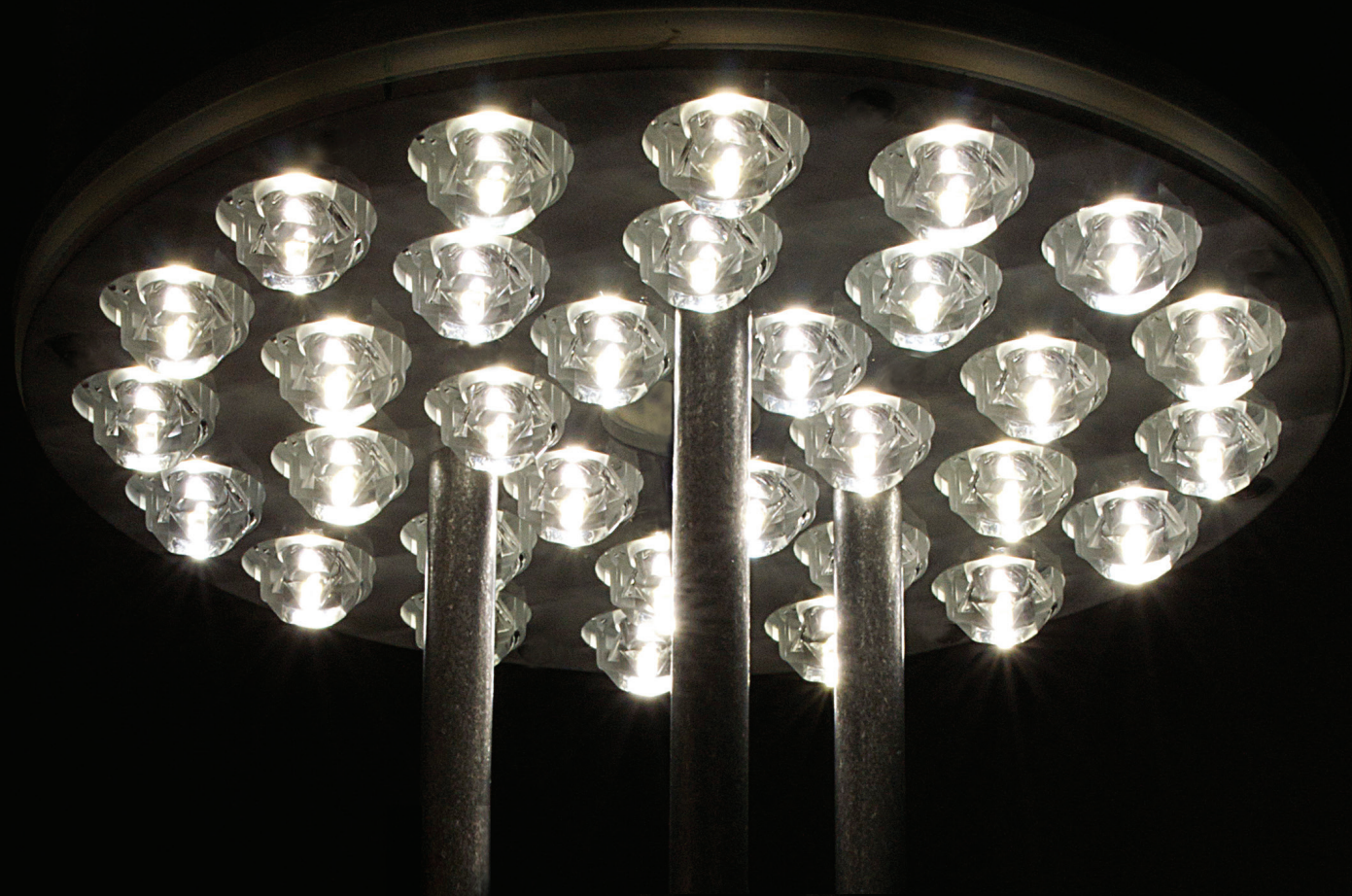
*Parkway*  
SQUARE®

architectural  
arealighting



HUBBELL  
Lighting

PARKWAY SQUARE® LED  
 MEDIUM SCALE BOLLARD  
 PKWM PKWB  
 SMALL SCALE SCONCE  
 PKWS PKSA/PKSP



*Parkway*  
 SQUARE®

AAL's Parkway Square family of architectural lighting products is a transitional, eclectic luminaire design, applicable for both traditional and modern architectural projects. The Parkway Square is constructed of high quality materials with options of stainless steel and copper, featuring a wide range of configurations for a variety of applications from pedestrian areas, building perimeters, streetscapes, store fronts and atriums.



Job site – Lake Elsinore Town Center, Lake Elsinore, California

Optimal Performance • Energy Efficiency

## OPTIMAL PERFORMANCE AND ENERGY EFFICIENCY

Precision engineering harnesses the power of today's brilliant, high-efficiency LED's to deliver maximum performance and reduce energy consumption.

Parkway Square presents a versatile approach to light delivery, emphasizing high performance, uniform illumination and flexibility in design with four distribution patterns available in a variety of standard color temperatures.

- Long lasting highly efficient LEDs
- Up to 5300 delivered lumens
- Up to 69 lumens per watt
- Three standard color temperatures: 5100K, 4200K or 3000K
- Standard IES distributions - Type 2, 3, 4, 5

## QUALITY ENGINEERING

The Parkway Square stands above other traditional lanterns available on the market today. The quality tested AAL design provides a lifetime of energy efficient, trouble free operation and a long lasting LED optical system.

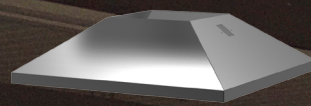
- IP66 optical system
- Internal surge protection
- 120-277 AC input voltage at 50/60Hz
- Upgrade Kit available for existing installations
- Integral thermal protection

Reliable • Efficient Operation

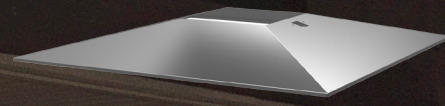
*Parkway*  
SQUARE®

## Hoods

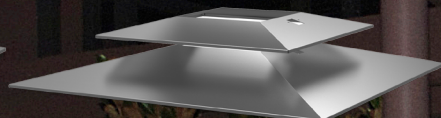
Parkway Square features three designer hoods, each with a distinct design statement, available in painted aluminum to match the fixture, or natural copper and stainless steel.



ANGLED HOOD - ANG \*



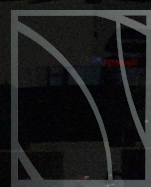
STRAIGHT HOOD - STR



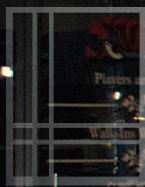
DOUBLE HOOD - DBL \*\*

## Screens

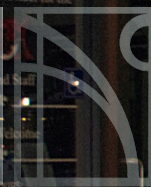
To customize the look of the luminaire, add a decorative screen in either a contemporary style such as Wheat or Infinity, or a more traditional style with Offset, Trio or Shutter. Submit your own design or logo to truly customize the luminaire. Each screen is created with a water laser to ensure smooth lines and consistency with each luminaire.



DSIN  
Infinity



DSOF  
Offset



DSWH  
Wheat



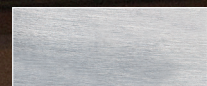
DSTR  
Trio



DSSH  
Shutter



DSCS  
Custom\*



STAINLESS STEEL  
Hood - STS



COPPER  
Hood - COP



# Parkway

SQUARE®

**architectural**  
**arealighting**

Architectural Area Lighting  
16555 East Gale Ave. | City of Industry | CA 91745  
T 626.968.5666 | F 626.369.2695 | [www.aal.net](http://www.aal.net)



**HUBBELL**  
Lighting