

WEJTAP™ In-Line Disconnect

WEJTAP™ In-Line Disconnect

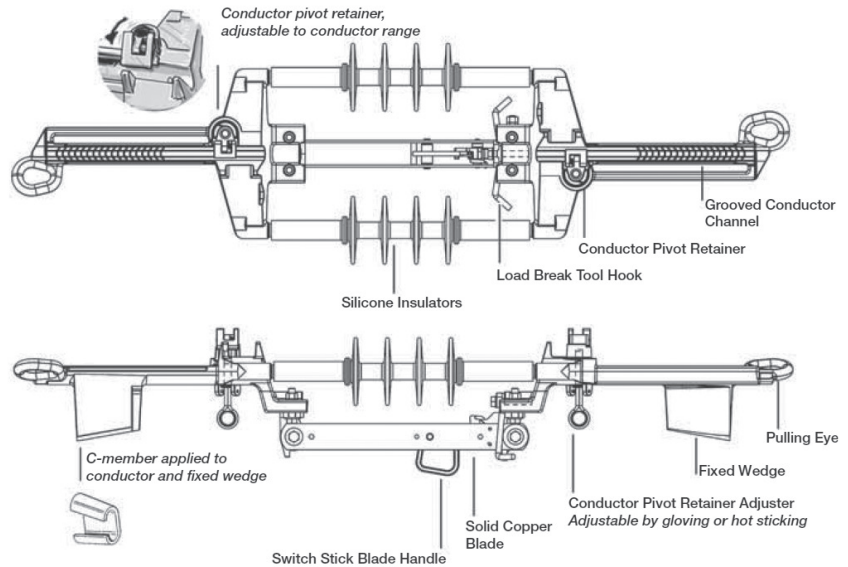
The BURNDY® In-Line Disconnect utilizes proven WEJTAP™ technology in combination with industry standard components to provide reliable performance of switch applications.

1. Utilizes WEJTAP™ connectors for securing the switch to the distribution line in tension applications.
2. Utilizes industry recognized and proven GST&D Products, LTD. blade components along with dual Advance Rubber Products, Inc., Insulators attached to a BURNDY® designed yoke plate assembly.
3. WEJTAP™ In-Line Disconnect designed for use in gloving and hot stick applications in conjunction with an industry standard load break tool.
4. Dual insulators minimize the switch movement during opening and closing of the blade.
5. Installation steps are minimized. The switch can be snapped directly on the line and secured with our conductor pivot retainer, designed into the switch frame.
6. WEJTAP™ tooling is used to secure the “C Member” to the built-in wedge feature of the frame. Providing reliable mechanical and electrical performance.
7. The blade is positioned on the switch to simplify cutting the conductor during installation.
8. In-Line Disconnect is removable and reusable.
9. Other conductor sizes available. Please contact factory.



Product Specifications

Voltage:	15 kV (110 kV BIL), 29 kV (150 kV BIL), 35 kV (200 kV BIL)
Current:	900 Ampere RMS
Short Circuit:	Momentary Current 40,000 Ampere RMS, Asymmetrical Three Second Current 25,000 Ampere RMS, Symmetrical
Strength:	Body 10,000 lbs. Pulling Eye 6,000 lbs.
Insulators:	Silicone
Meets Industry Standards:	ANSI C119.4, C37.32 IEEE C37.30, C37.34 CSA C83.71 ASTM B117 Salt Fog

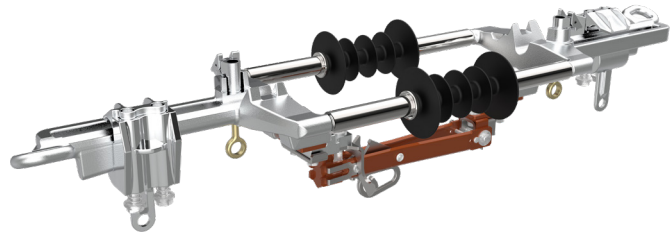


Catalog Number	KV/BIL Ratings	Conductor Dia. Range	Common Conductors		Replacement Tap
			ACSR	AAC	
WAD1015	15 kV/110 kV BIL	0.398" - 0.502"	1/0 (6/1), 2/0 (6/1), 3/0 (6/1)	2/0, 3/0	WADRT1
WAD1029	29 kV/150 kV BIL				
WAD1035	35 kV/200 kV BIL				
WAD4015	15 kV/110 kV BIL	0.522" - 0.609"	4/0 (6/1), 266.8 (18/1)	4/0, 250, 266.8 (7 Str. , 19 Str.), 336 compact	WADRT1
WAD4029	29 kV/150 kV BIL				
WAD4035	35 kV/200 kV BIL				
WAD33615	15 kV/110 kV BIL	0.642" - 0.723"	266.8 (26/7, 30/7) 336.4 (18/1, 26/7)	336, 350, 397.5, 477 compact	WADRT2
WAD33629	29 kV/150 kV BIL				
WAD33635	35 kV/200 kV BIL				
WAD47715	15 kV/110 kV BIL	0.741" - 0.814"	336.4 (30/7), 397.5 (All Str.), 477 (18/1)	477 (19 Str. , 37 Str.), 500 (19 Str. , 37 Str.), 556 compact	WADRT1
WAD47729	29 kV/150 kV BIL				
WAD47735	35 kV/200 kV BIL				
WAD55615	15 kV/110 kV BIL	0.846" - 0.883"	477 (24/7, 26/7, 30/7), 556 (18/1)	556 (19 Str. , 37 Str.)	WADRT2
WAD55629	29 kV/150 kV BIL				
WAD55635	35 kV/200 kV BIL				
WAD79515	15 kV/110 kV BIL	0.953" - 1.040"	556 (26/7, 30/7), 795 (36/1)	795 (37 Str. , 61 Str.)	WADRT3
WAD79529	29 kV/150 kV BIL				
WAD79535	35 kV/200 kV BIL				

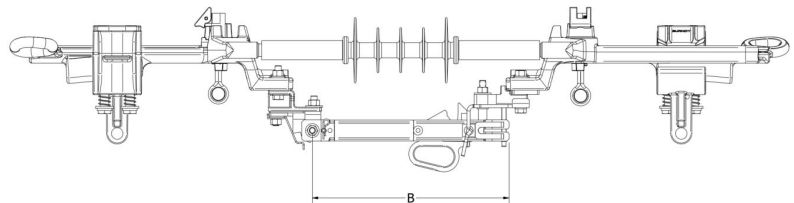
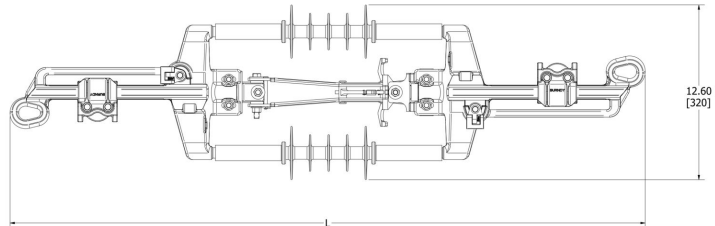
WEJTAP™ Bolted Wedge In-Line Disconnect Switch

Type WADM-H Bolted Wedge In-Line Disconnect Switch

Combining the best features of the WEJTAP™ In-Line Disconnect Switch, the WADM-H Bolted Wedge enhances the range taking capabilities with an innovative hybrid bolted connector while maintaining the time savings features.



1. Bolted hybrid connector combines bolted technology with wedge features to make a reliable connection while taking the guess work of knowing when “tight is tight”.
2. Spring loaded pivot retainer snaps onto the conductor freeing the hands of the installer to quickly and safely complete the installation.
3. Dual insulators minimize the switch rotation during opening and closing, especially in mid-span applications.
4. The switch can be easily removed and reused (reconditioning required).
5. The blade can be locked at 90 and 155 degrees.



Product Specifications

Voltage: 15 kV (110 kV BIL)
35 kV (200 kV BIL)

Current: 900 Ampere RMS

Strength: Body 10,000 lbs

Catalog Number	kV / BIL Ratings	Conductor Dia. Range	Conductors		Replacement Connector	Dimensions	
			ACSR	AAC		L (in) [mm]	B (in) [mm]
WADM33615H	15 kV / 110 kV BIL	0.398" - 0.72"	1/0 (6/1)	2/0 (7) (19)	WADM336CON	46 [1168]	11.6 [295]
WADM33635H	35 kV / 200 kV BIL		336.4 (18/1)	350 (19)		52 [1321]	18.0 [458]
WADM55615H	15 kV / 110 kV BIL	0.721" - 0.927"	336.4 (26/7)	397.5 (19)	WADM556CON	44 [1168]	11.6 [295]
WADM55635H	35 kV / 200 kV BIL		556.5 (26/7)	556 (19)		52 [1321]	18.0 [458]
WADM79515H	15 kV / 110 kV BIL	0.927" - 1.040"	556.5 (26/7)	650 (37)	WADM795CON	44 [1168]	11.6 [295]
WADM79535H	35 kV / 200 kV BIL		795 (36/1)	795 (37)		52 [1321]	18.0 [458]

Tightening torque for all sizes is 480 in-lbs; 3/4" wrench