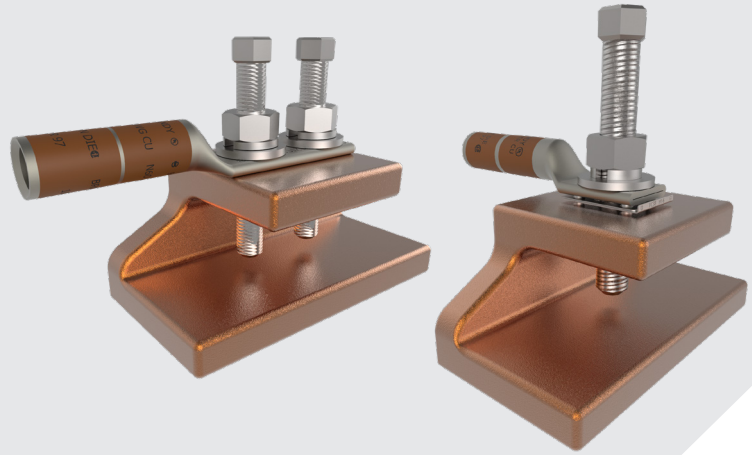


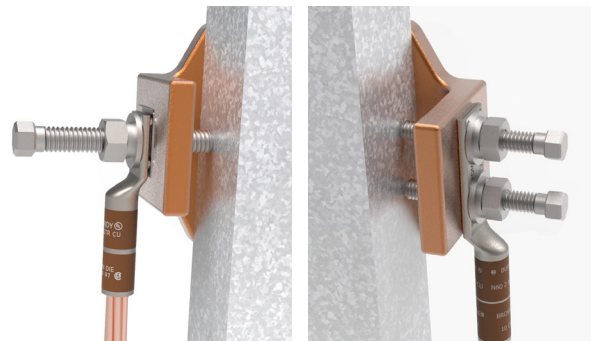
GCS-YA TOWER GROUND CLAMP



The GCSYA_WEEB and GCS2YA series connectors are used to terminate the equipment grounding conductor (EGC) to the tower structure, in applications where drilling or hot permits are either not possible or unwanted. Installation requires no power tools and is simple to install. The GCSYA_WEEB is assembled with a WEEB® Washer to reduce one-hole lug rotation. These connectors can also be used in a variety of other applications outside of tower grounding as it is suitable to bond steel from 1/8”-5/8” thick.

FEATURES AND BENEFITS

- Provides proper grounding of towers
- Easy and simple hex tooling installation
- No hot work permit or drilling required
- Includes compression lug and anti-rotation WEEB Washer for one-hole applications
- Accommodates steel 1/8” TO 5/8” thick
- Conductor range from #8 AWG to #2 AWG
- UL467 Listed
- AT&T Approved



Material Description	Description
GCSYA8CWEEB	8AWG - Single Hole Clamp - Accommodates steel 1/8” TO 5/8” thick
GCSYA62CWEEB	6AWG - Single Hole Clamp - Accommodates steel 1/8” TO 5/8” thick
GCSYA4CWEEB	4AWG - Single Hole Clamp - Accommodates steel 1/8” TO 5/8” thick
GCSYA2CWEEB	2AWG - Single Hole Clamp - Accommodates steel 1/8” TO 5/8” thick
GCS2YA8C	8AWG - Two Hole Clamp - Accommodates steel 1/8” TO 5/8” thick
GCS2YA6C	6AWG - Two Hole Clamp - Accommodates steel 1/8” TO 5/8” thick
GCS2YA4C	4AWG - Two Hole clamp - Accommodates steel 1/8” TO 5/8” thick
GCS2YA2C	2AWG - Two Hole clamp - Accommodates steel 1/8” TO 5/8” thick



burndy.com

For product inquiries, please contact your BURNDY® Customer Service Representative at 1-800-346-4175, Tooling Service Center 1-800-426-8720, or Technical Services 1-800-451-4956.

©2021 Hubbell Incorporated.
Because Hubbell has a policy of continuous product improvement, we reserve the right to change design and specifications without notice.
Printed in the U.S.A.