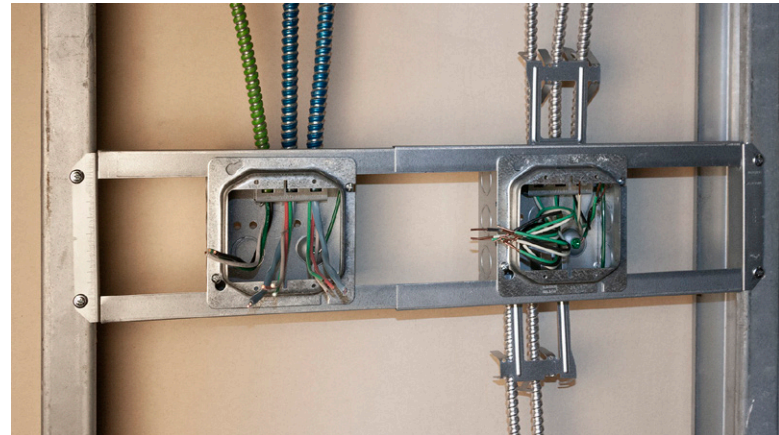


4" STAB-iT® Box Assemblies for Pre-Fab

Save time and labor with pre-assembled components!

FEATURES

- All components preassembled, ready to install
- STAB-iT 4" Boxes
 - STAB-iT connector holds 2 cables
 - Built-in cable management clips provides first means of support
 - Model ending in HF feature a Heavy Duty Universal Box Support
- Adjustable Mud Rings & Hinged Adjustable Mud Rings
 - 1/2" to 1-3/8" adjustability range
 - All screws inside the ring to eliminate damage from router
 - Adjustment screws visible and accessible after the device is installed
 - Hinged design allows easy and quick access to install wiring
- Open Center Brackets pre-set for either 16" or 24" studs
- Designed and assembled in USA
- UL Listed



APPLICATIONS

For use on wood or metal studs. ProReady prefab box assemblies are ready to install right out of the box. Ensure quality while reducing material and labor costs, even jobsite waste.



FW1.1



FW1.7



FW1.9



FW4.1



FW4.7



FW4.9

4" Square Box/Pre-Fab Assemblies

Catalog No.	Description	Cu. In. Capacity	Ctn. Qty.
FW1.1	232MSCMHF + 773 / 1G Mud Ring, Raised 3/4" / M Bracket	30.3	12
FW1.7	232MSCMHF + 768HAMR / 1G Hinged Adjustable Mud Ring / M Bracket	30.3	12
FW1.9	232MSCMHF + 768AMR / 1G Adjustable Mud Ring / M Bracket	30.3	12
FW4.1	232MSCMHF + 779 / 2G Mud Ring, Raised 3/4" / M Bracket	30.3	12
FW4.7	232MSCMHF + 768HAMR/ 2G Hinged Adjustable Mud Ring / M Bracket	30.3	12
FW4.9	232MSCMHF + 769AMR / 2G Adjustable Mud Ring / M Bracket	30.3	12



4" Square Box/Pre-Fab Assemblies

Catalog No.	Description	Cu. In. Capacity	Ctn. Qty.
FW2.1.16	9020R + 232SCM + 773 / 1G Mud Ring, Raised 3/4" / 16" Studs	30.3	6
FW2.7.16	9020R + 232SCM + 768HAMR / 1G Hinged Adjustable Mud Ring / 16" Studs	30.3	6
FW2.9.16	9020R + 232SCM + 768AMR / 1G Adjustable Mud Ring / 16" Studs	30.3	6
FW5.1.16	9020R + 232SCM + 779 / 2G Mud Ring, Raised 3/4" / 16" Studs	30.3	6
FW5.7.16	9020R + 232SCM + 768HAMR / 2G Hinged Adjustable Mud Ring / 16" Studs	30.3	6
FW5.9.16	9020R + 232SCM + 769AMR / 2G Adjustable Mud Ring / 16" Studs	30.3	6
FW3.1.16	9020R + 232SCM + 231 + (2) 773 / 1G Mud Ring, Raised 3/4" / 16" Studs	30.3 + 30.3	6
FW3.7.16	9020R + 232SCM + 231 + (2) 768HAMR / 1G Hinged Adjustable Mud Ring / 16" Studs	30.3 + 30.3	6
FW3.9.16	9020R + 232SCM + 231 + (2) 768AMR / 1G Adjustable Mud Ring / 16" Studs	30.3 + 30.3	6
FW6.1.16	9020R + (232SCM + 779) / 2G - Mud Ring, Raised 3/4" + (231 + 773) / 1G Mud Ring, Raised 3/4" / 16" Studs	30.3 + 30.3	6
FW6.7.16	9020R + (232SCM + 768HAMR) 2G Hinged Adjustable Mud Ring + (231 + 769HAMR), 1G Hinged Adjustable Mud Ring / 16" Studs	30.3 + 30.3	6
FW6.9.16	9020R + (232SCM + 869AMR) / 2G Adj. Mud Ring + (231 + 768AMR) / 1G Adj. Mud Ring / 16" Studs	30.3 + 30.3	6
FW2.1.24	9020R + 232SCM + 773 / 1G Mud Ring, Raised 3/4" / 24" Studs	30.3	6
FW2.7.24	9020R + 232SCM + 768HAMR 1G Hinged Adjustable Mud Ring / 24" Studs	30.3	6
FW2.9.24	9020R + 232SCM + 768AMR / 1G Adjustable Mud Ring / 24" Studs	30.3	6
FW3.7.24	9020R + 232SCM + 231 + (2) 768HAMR / 1G Hinged Adjustable Mud Ring / 24" Studs	30.3 + 30.3	6
FW5.1.24	9020R + 232SCM + 779 / 2G Mud Ring, Raised 3/4" / 24" Studs	30.3	6
FW5.7.24	9020R + 232SCM + 769HAMR / 2G Hinged Adjustable Mud Ring / 24" Studs	30.3	6
FW5.9.24	9020R + 232SCM + 769AMR / 2G Adjustable Mud Ring / 24" Studs	30.3	6
FW3.1.24	9020R + 232SCM + 231 + (2) 773 / 1G Mud Ring, Raised 3/4" / 24" Studs	30.3 + 30.3	6
FW3.9.24	9020R + 232SCM + 231 + (2) 768AMR / 1G Adjustable Mud Ring / 24" Studs	30.3 + 30.3	6
FW6.1.24	9020R + (232SCM + 779) / 2G Mud Ring, Raised 3/4" + (231 + 773) / 1G Mud Ring, Raised 3/4" / 24" Studs	30.3 + 30.3	6
FW6.7.24	9020R + (232SCM + 768HAMR) 2G Hinged Adjustable Mud Ring + (231 + 769HAMR), 1G Hinged Adjustable Mud Ring / 24" Studs	30.3 + 30.3	6
FW6.9.24	9020R + (232SCM + 769AMR) / 2G Adj. Mud Ring + (231 + 768AMR) / 1G Adj. Mud Ring / 24" Studs	30.3 + 30.3	6