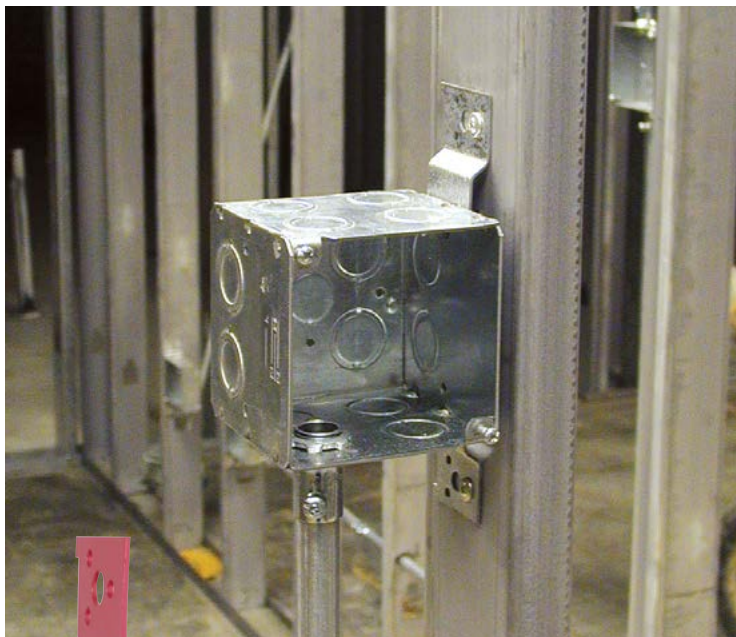




**Commercial, Industrial
and Residential Electrical Products**



LARGE CAPACITY STEEL WALL BOXES

3-1/2" Deep, 3-3/4" Square Boxes

Application

Extra deep box accommodates larger sized wiring devices such as dimmers, designer wiring devices, GFCI and communication/data services in commercial applications

Features

- Saves time and labor, no need to install an extension ring on a std. 4" sq. box
- Accommodates standard 4" sq. mud rings or covers
- 3-1/2 inch deep, 3-3/4 inch square face
- Large 45.0 cu. in. volume design allows for additional work room inside box
- RACO 255 features an FM bracket for mounting to steel or wood studs
- Standard 1/2" and 3/4" concentric knockouts
- Manufactured from .062 thick pre-galvanized steel
- Use RACO 971 partition for mixed voltage applications
- UL Listed 731A

255



911-1

UL LISTED
Outlet Box
731A



911-2



256

Catalog Number	Description	Cubic In.	Knockouts			UPCA	I 2 of 5	Std Pkg.
			Sides	Bottom	end			
256	3-1/2" deep, 3-3/4" square box, w/ conduit KOs	45.0	12, 1/2"- 3/4" Concentric	4, 1/2"- 3/4" Concentric, (1) 1/2"	4, 1/2"- 3/4" Concentric	020169002568	50050169002563	25
911-2	Painted red	45.0	12, 1/2"- 3/4" Concentric	4, 1/2"- 3/4" Concentric, (1) 1/2"	4, 1/2"- 3/4" Concentric	050169091128	50050169091123	25
255	3-1/2" deep, 3-3/4" square box, welded w/ conduit KOs & FM bracket	45.0	10, 1/2"- 3/4" Concentric	4, 1/2"- 3/4" Concentric, (1) 1/2"	4, 1/2"- 3/4" Concentric	050169002551	50050169002556	10
911-1	FM bracket, painted red	45.0	10, 1/2"- 3/4" Concentric	4, 1/2"- 3/4" Concentric, (1) 1/2"	4, 1/2"- 3/4" Concentric	050169091111	50050169091116	10



**COMMERCIAL
CONSTRUCTION**
A Division of Hubbell Incorporated (Delaware)

RACO
3902 West Sample St.
South Bend, IN 46619
574-234-7151
www.hubbell.com/raco/en

