



## 1/2" and 3/4" BYPASS

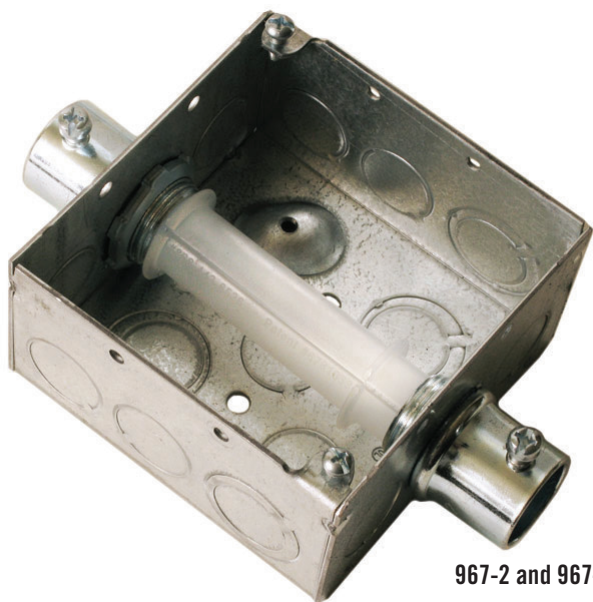
### BYPASS for 4" and Octagon Boxes

#### Application

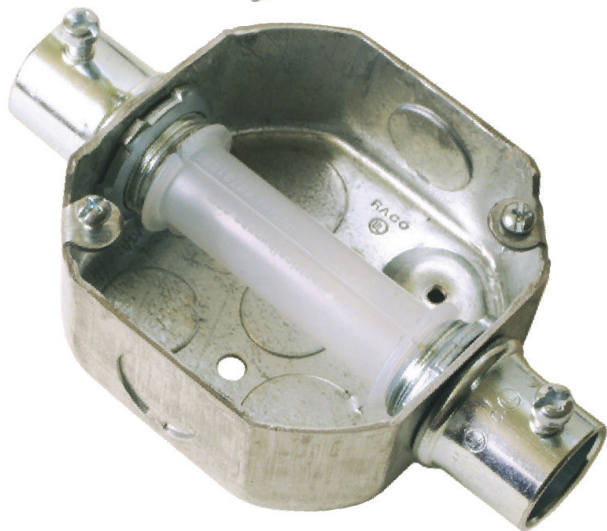
Use when running wire through conduit with multiple, in-series junction boxes. Eliminates starts and stops of running wire through conduit at each junction box.

#### Features

- Made of soft, plastic material to facilitate installation with 1/2" and 3/4" fittings in junction boxes
- Can be used in 4" square and octagon junction boxes
- Installed BYPASS facilitates wire runs through multiple junction boxes eliminating the need to begin new run with each junction box
- Product has perforated, lengthwise slit allowing product to be easily removed when wire run has been completed
- Remove BYPASS, pull and cut wire in junction box to length, install covers and devices



967-2 and 967-3



Catalog No.	Description	Trade Size	Box Size	Std. Pkg.	UPC-A Bar Code
967-2	Clear Plastic BYPASS Tube	1/2"	4"	25	050169096727
967-3	Clear Plastic BYPASS Tube	3/4"	4"	25	050169096734