



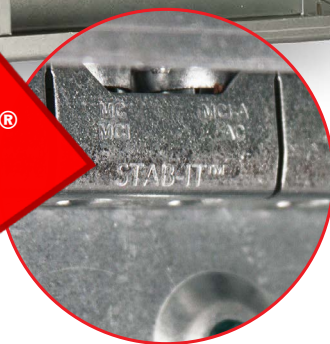
*Commercial, Industrial  
and Residential Electrical Products*

# Grand Slam Box with Cable Management

## “Better than a Home Run”



**with  
built-in STAB-IT®  
clamps for MC**

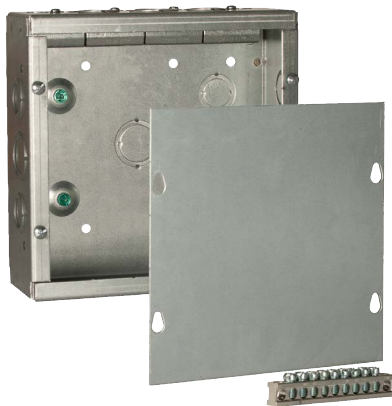


### Application

RACO's Grand Slam Box is the quickest and easiest way to terminate home runs and other electrical wiring. Specifically designed for commercial applications, the Grand Slam Box offers both the flexibility and space desired in a junction box. Featuring RACO's STAB-IT® clamps for MC built-in, the Grand Slam Box offers the most labor savings and flexibility of any home run box on the market.

### Features

- STAB-IT® clamp has been tested at over 3X's faster than traditional MC connectors
- Designed for quick installation of flex, MC, MCI, MCI-A, HCF, AC and EMT
- Surface mount cover and ground bar included
- Two sizes to meet customer preference and job requirements 8" and 12"
- Two raised grounds and included ground bar
- Available with concentric knockouts on side and back for easy access
- UL Listed



*Surface Mount Cover  
& Ground Bar Included*



*Grand Slam Box installed  
with 991 Box Hanger*



# GRAND SLAM BOX



Catalog No.	Description	Dimensions	Knockouts	Built-in STAB-IT® Clamps	Cu. In. Cap.	Carton Qty.
SC080803STRC	8" x 8" Junction Box (Surface Cvr. & Grnd. Bar Included)	8" x 8" x 3"	(12) 1/2" & 3/4" Concentric (5) 3/4" & 1" Concentric	4 (14/2 to 10/3) Up to 8 Cables	179	1
SC121204STRC	12" x 12" Junction Box (Surface Cvr. & Grnd. Bar Included)	12" x 12" x 4"	(12) 1/2" & 3/4" Concentric (9) 3/4" & 1" Concentric (8) 1" & 1-1/4" Concentric	6 (14/2 to 10/3) Up to 12 Cables	546	1
SC080803NKSTRC	8" x 8" Junction Box (Surface Cvr. & Grnd. Bar Included)	8" x 8" x 3"	—	4 (14/2 to 10/3) Up to 8 Cables	179	1
SC121204NKSTRC	12" x 12" Junction Box (Surface Cvr. & Grnd. Bar Included)	12" x 12" x 4"	—	6 (14/2 to 10/3) Up to 12 Cables	546	1



Flush Mount Cover  
(sold separately)

STAB-IT  
Connector

Catalog No.	Description	Dimensions	Carton Qty.
SCF0808RC	Flush Mount Cover	8" x 8"	1
SCF1212RC	Flush Mount Cover	12" x 12"	1
989ST	STAB-IT® Connector (accepts 2 cables) Works with all Grand Slam boxes	—	50

### CABLE TYPES AND RANGES FOR STAB-IT® CLAMP

CABLE TYPE	CABLE RANGE
AC STEEL & ALUMINUM	14-2, 14-3, 14-4, 12-2, 12-3, 12-4, 10-2, 10-3
HCF AC STEEL	14-2, 14-3, 14-4, 12-2, 12-3, 10-2, 10-3
HCF AC ALUMINUM	12-2, 12-3, 12-4, 10-2, 10-3
MC STEEL & ALUMINUM	14-2, 14-3, 14-4, 12-2, 12-3, 12-4, 10-2, 10-3
MCI-A STEEL & ALUMINUM	14-2, 14-3, 14-4, 12-2, 12-3, 12-4, 10-2, 10-3
HCF MCI-A STEEL	12-2, 12-3, 10-2
HCF MCI-A ALUMINUM	14-2, 14-3, 14-4, 12-2, 12-3, 12-4, 10-2, 10-3
3/8 TRADE SIZE FLEX. RWFMC CONDUIT STEEL & ALUMINUM Anti Short Bushings Required	

CABLE RANGE .400" DIA. MIN. TO .605" DIA. MAX.

Cable Armor must comply with NEC 250.96

To remove cable unscrew clamp from the box then pull clamp off cable.

To install more cables use any of the RACO® REDI-LOC® connectors.



**COMMERCIAL  
CONSTRUCTION**  
A Division of Hubbell Incorporated (Delaware)

**RACO**  
3902 W. Sample St.  
South Bend, IN 46619  
574-234-7151  
[www.hubbell.com/raco/en](http://www.hubbell.com/raco/en)



RA-430 rev6