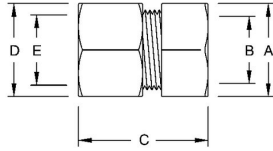


**RIGID TO EMT COMBINATION COUPLINGS - STEEL**Rigid-EMT Couplings, Threaded/Compression Steel
N/A**B31**

Catalog #: 1353

APPLICATIONS

For use when coupling rigid/IMC conduit to EMT conduit

Use RACO Cat. Nos. 1352 to 1354 when coupling threaded rigid/IMC conduit to EMT. Use RACO Cat. Nos. 1432 to 1434 when coupling unthreaded rigid/IMC conduit to EMT

PRODUCT FEATURES

All steel construction insures mechanical protection

All components are zinc electro plated for corrosion protection

UPC bar code fittings are individually polybagged with a preprinted UPC-A bar code, and packaged in pre-scored tear top cartons for an attractive presentation

N/A

UL LISTED

Standard 514B (1432 - 1434 only), UL File E195969

GENERAL PRODUCT INFORMATION

Trade Size: 3/4 in.

DRAWING DIMENSIONS

Dimension A: 1-3/8 in.
 Dimension B: 31/32 in.
 Dimension C: 1-17/32 in.
 Dimension D: 1-3/8 in.
 Dimension E: 15/16 in.

PACKAGING

Package Type: Carton
 Ship Carton Qty.: 25
 Product UPC-A Labeled: No
 Weight (Lbs. Per/C): 16.40
 Ship Carton Length (in.): 8.25
 Ship Carton Width (in.): 5.00
 Ship Carton Height (in.): 4.00
 Ctn Weight (Lbs.): 4.10
 UPC Number: 050169013533
 I2of5: 50050169013538