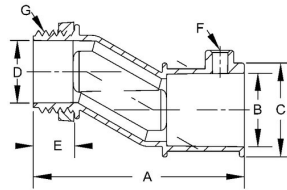




EMT SET SCREW OFFSET CONNECTORS

Set Screw Offset Connector Die Cast Zinc
N/A

B12



Catalog #: 1762

APPLICATIONS

For use in dry locations to bond EMT conduit to a box or enclosure
N/A

PRODUCT FEATURES

Rugged metallic construction insures mechanical protection for the raceway
Suitable for applications above 600V
Concrete-tight when taped

UL LISTED

File E195969

CSA

C22.2 No. 18

GENERAL PRODUCT INFORMATION

Sub Class: Uninsulated
Trade Size: 1/2 in.

DRAWING DIMENSIONS

Dimension A: 2-3/32 in.
Dimension B: 23/32 in.
Dimension C: 13/16 in.
Dimension D: 5/8 in.
Dimension E: 13/32 in.
Dimension F: 10-24 x 5/16 in.
Dimension G: 1/2 in. - 14

PACKAGING

Package Type: Carton
Ship Carton Qty.: 50
Product UPC-A Labeled: No
Weight (Lbs. Per/C): 10.10
Ship Carton Length (in.): 7.45
Ship Carton Width (in.): 5.37
Ship Carton Height (in.): 5.45
Ctn Weight (Lbs.): 5.05
UPC Number: 050169017623
I2of5: 50050169017628