

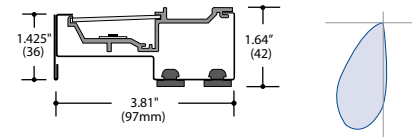
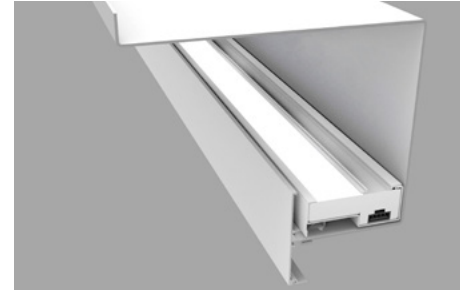
AXIOM® Indirect Light Covers by Armstrong

Fixture Type:

Project Name:

Ordering Guide

Feature	Code	Options	Description
Series		17L	Cove-17
Mounting		CW	Armstrong Axiom Cove Wall
Fixture distribution		AI	Asymmetric Indirect
Row length (in feet)		----	Enter in foot increments. Note fixture lengths below.
Max length in row		02 03 04	24-1/16" 610mm 36", 914mm 48", 1219mm
Finish/Color		C1	Matte White
Color temperature		30K 35K 40K	3000K 3500K 4000K
Output/ft <i>(specifiable in 50 lumens/ft increments)</i>		I030 I100	300 (min) see "Driver" section for limitations 1000 (max)
Driver		NDM D01 DS1 D00 DS0	Non Dimming 1% Dimming, 0-10V Soft Start 1% Dimming Dim-to-off Soft-Start Dim-to-off (1%)
Circuiting		1C	1 Circuit
Voltage		UNV 120 240	Universal Voltage (120 or 277) 120 Volt 240 Volt
Thru-wiring		W1 W3	No Thru Wire Provide Normal Thru Wiring Only
Optional Features	Code	Options	Description
Nightlight		_NL	Nightlight Circuit Required. Enter quantity. 2NL = 2 nightlight circuits/row



Key Features

- Variable Intensity technology provides a range of specifiable outputs and resulting fixture wattages
- Asymmetric distribution
- Specifically designed to work with Armstrong Axiom Indirect Light Covers

Performance

Output	Lumens/ft	W/ft	Efficacy (Fixture Only)	Efficacy (Installed)
I030	300	2.7	113	22.1
I035	350	3.1	113	24.9
I040	400	3.4	119	26.4
I045	450	3.7	121	27.4
I050	500	4.2	120	28.3
I055	550	4.5	122	28.7
I060	600	4.9	123	29
I065	650	5.2	125	29.2
I070	700	5.8	122	29.2
I075	750	6.2	121	29.2
I080	800	6.6	121	29.1
I085	850	7.0	122	28.9
I090	900	7.3	124	31.8
I095	950	7.8	123	31
I100	1000	8.3	121	30.4

(wattage may vary up to 5% from published)



Quick Find litecontrol.com

17L

AXIOM® Indirect Light Covers by Armstrong

Details

Construction:

Steel housing. Aluminum LED module snaps into housing.

Mounting:

Install in cove (provided by others). Interior cove dimensions should allow for a 4.5" x 1.5" cross-section. For maximum efficiency, wall and ceiling above cove should have matte surfaces with high reflectances.

Distribution

Cove Ceiling (CC-AI)-Fixture lumens reflected indirectly off ceiling.
Cove Wall (CW-AI)-Fixture lumens reflected indirectly off wall.

Fixture length:

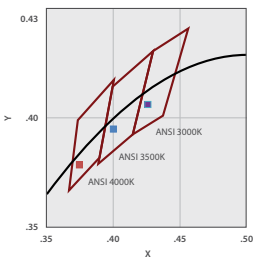
02 (24-1/16" 610mm)
03 (36", 914mm)
04 (48", 1219mm)

Finish/Color:

Housing can be painted in C1 Matte White only. LED module is white. Visit www.litecontrol.com/finishes for details.

CCT:

30K-3000K output multiplier 0.975
35K-3500K output multiplier 1.0
40K-4000K output multiplier 1.05



Color Variation:

2 step MacAdam ellipse

Output (VI technology):

Variable Intensity (VI) technology allows precise specification of fixture output/wattage. Fixture will be programmed and labeled to specification. See output section for available increments.

Output:

Specify in 50 lumens increments/ft within the below range:

	Lumens/ft	Nomenclature
Min:	300	I030
Max:	1000	I100

Driver:

NDM: Non-dimming. Fixture will be wired for fixed light output.
D01: 100%-1% dimming range. Fixture will be wired for low voltage 0-10V dimming control.
DS1: Soft-Start 100%-1% dimming range. Fixture will be wired for low voltage 0-10V dimming control.
D00: Dim-to-off 100%-1% Dimming range. Fixture will be wired for low voltage 0-10V dimming
DS0: Soft-Start Dim-to-off 100%-1% dimming range. Fixture will be wired for low voltage 0-10V dimming control.

Circuiting:

1C (1 Circuit) Fixture wired for a single circuit.

Nightlight:

See separate LC-Nightlight spec sheet for additional details.

Emergency:

Integral-not available
Inverter-compatible (by others)

Thru wiring:

See separate LC-Thruwire spec sheet for additional details.

Power feed:

Fixture intended to be wired with 3/8" flexible whip.

Field accessibility:

LED boards and drivers can be accessed and removed from fixture, while installed.

CRI:

80 minimum

CCT	CRI	R1	R2	R3	R4	R5	R6	R7	R8	R9	R10	R11	R12	R13	R14
30K	82	81	89	94	80	80	84	85	65	19	73	78	63	83	96
35K	83	82	90	94	81	81	85	87	68	24	75	78	62	84	97
40K	83	82	89	92	81	81	83	88	70	23	72	78	55	84	95

Rated Life:

Tested in accordance to LM79-2008 & derived from EPA TM21 calculator
L70: 160,000 (calculated per TM21 extrapolated curve)
L70: >36,288 (reported per TM21/LM80 6x's limitation)
L90: 50,000 (calculated per TM21 extrapolated curve)
L90: >36,288 (reported per TM21/LM80 6x's limitation)

Fixture weight:

2.5 lbs/ft.

Ratings:

CSA listed for damp locations. IBEW. AF of L. This product qualifies as a "designated country construction material" per FAR 52.225-11 Buy American-Construction. Materials under Trade Agreements effective 8/14/2020.

See [Buy American Solutions](#).

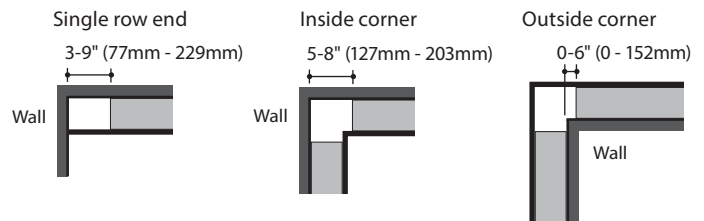


Warranty:

LED boards-5 years
LED drivers (standard)-5 years
LED drivers (Lutron)-3 years

Recommended fixture positioning:

Positioning at Ends and Corners
Standard Reflector



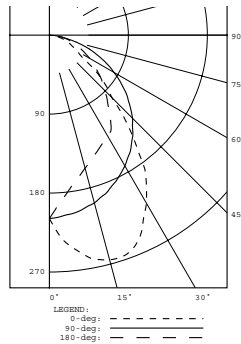
Quick Find litecontrol.com

17L

AXIOM® Indirect Light Covers by Armstrong

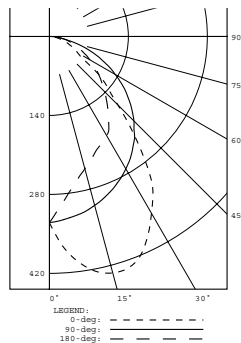
Photometry

Fixture: 17L-CW-AI-02-C1-35K-I035
CCT: 3500K
Output: I035
Nominal lumens: 350 lumens/ft
***Efficacy:** 34.9 lm/W
Test report: 15L-CC-AI-X-02-C1-35K-I030



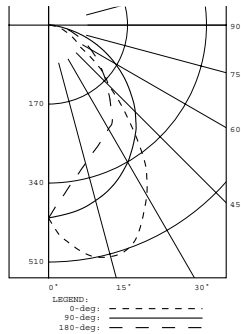
Zone	Zonal Lumens	
	Lumens %	Lamp %
0-30	165	32.6
0-40	265	52.4
0-60	428	84.6
0-90	506	100
90-120	0	0
90-130	0	0
90-150	0	0
90-180	0	0
0-180	506	100

Fixture: 17L-CW-AI-02-C1-35K-I060
CCT: 3500K
Output: I060
Nominal lumens: 600 lumens/ft
***Efficacy:** 30.7 lm/W
Test report: 15L-CC-AI-X-02-C1-35K-I030 (HPR)



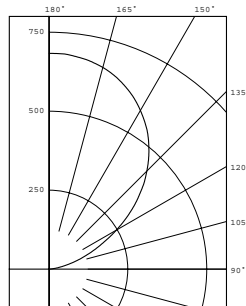
Zone	Zonal Lumens	
	Lumens %	Lamp %
0-30	263	32.5
0-40	424	52.3
0-60	685	84.6
0-90	810	100
90-120	0	0
90-130	0	0
90-150	0	0
90-180	0	0
0-180	810	100

Fixture: 17L-CW-AI-02-C1-35K-I085
CCT: 3500K
Output: I085
Nominal lumens: 850 lumens/ft
***Efficacy:** 30.7 lm/W
Test report: 15L-CC-AI-X-02-C1-35K-I030 (HPR)



Zone	Zonal Lumens	
	Lumens %	Lamp %
0-30	323	32.9
0-40	517	52.7
0-60	830	84.7
0-90	980	100
90-120	0	0
90-130	0	0
90-150	0	0
90-180	0	0
0-180	980	100

Fixture: 17L-CW-AI-02-C1-35K-I035 w/o Axiom
CCT: 3500K
Output: I035
Nominal lumens: 350 lumens/ft
Efficacy: 123.2 lm/W
Test report: 15L-CC-AI-X-02-C1-35K-I030 (HPR)



Zone	Zonal Lumens	
	Lumens %	Lamp %
0-30	0	0
0-40	0	0
0-60	0	0
0-90	0	0
90-120	276	15.6
90-130	557	31.5
90-150	1232	69.8
90-180	1766	100
0-180	1766	100

*Fixtures assume ~72% loss in efficacy once installed in Cove Wall System.