

WASP™2 Occupancy Sensor Kit

OCCUPANCY SENSORS AND CONTROLLERS

TITLE
24
COMPLIANCE



PROJECT INFORMATION

Project Name _____

Catalog No. _____

Date _____

WASP₂



*End Mount WASP2 Sensor
with lens option*

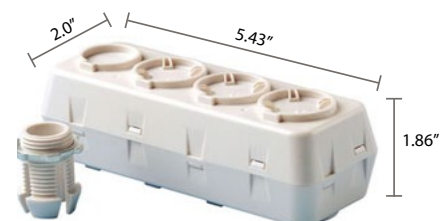
The WASP2 Occupancy Sensor is an Indoor Sensor, specifically designed for ON/OFF control of high bay fixtures in warehouse, distribution centers and similar facilities.

This WASP2 sensor features a daylight sensor which can be used to increase energy savings by turning off lights when there is sufficient natural light detected. A masking kit is included that can be added during installation to modify the PIR sensor's detection pattern.

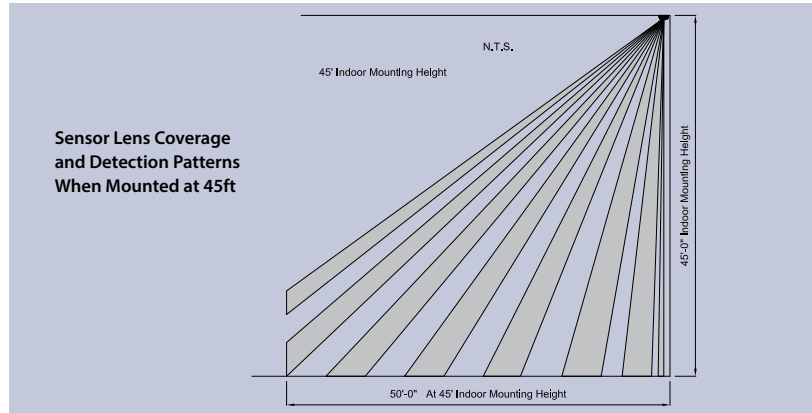
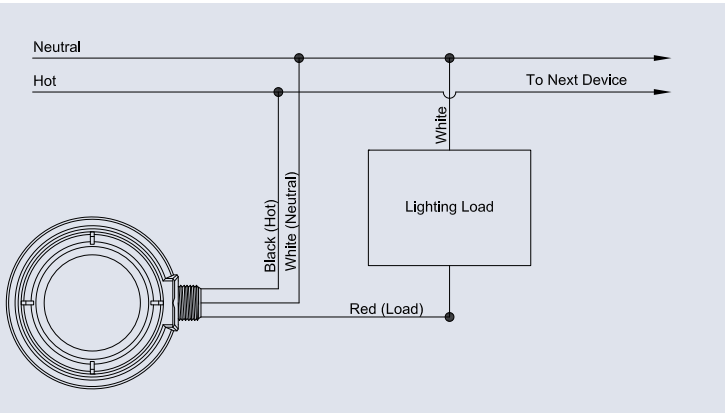
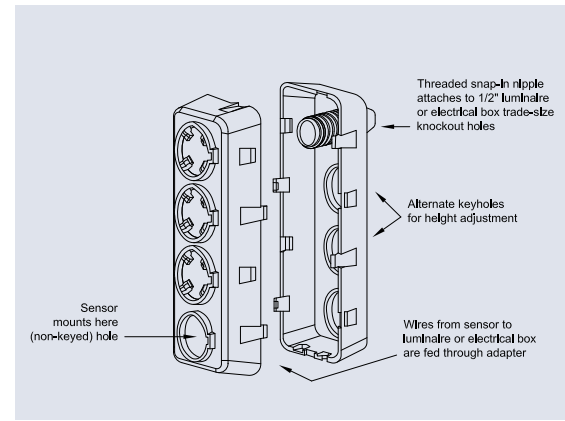
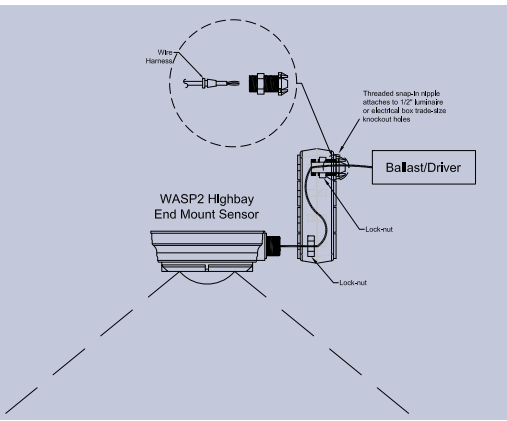
The offset adaptor improves the field of view for sensors where the geometry of the fixture might otherwise interfere with the sensor's performance. Snaps into a standard 1/2" knockout on the end of the fixture and provides several mounting options for the sensor.

PRODUCT FEATURES

- Digital Passive Infrared (PIR) sensor
- Mounting height is 45 ft indoor only
- Single output
- End Mount installation
- Daylight sensor for daylight harvesting applications
- UL and cUL listed
- Five-year limited warranty
- Kit includes WASP2 Occupancy Sensor, Lens, Adaptor and Masking Kit



HUBBELL
Control Solutions



General Specifications

| | |
|--|--|
| Power Requirements | Line Voltage sensors: 120/277/347VAC, 60 Hz |
| Load Ratings (Line voltage sensors) | 120VAC: 0-800W ballast or 0-600W tungsten, 60Hz 277VAC: 0-1200W ballast 347VAC: 0-1500W ballast 1/4 HP motor load @ 120VAC, 1/6HP @ 347VAC |
| User Interface | (1) Twelve pin dip switch |
| Timer Timeouts | Primary: 8-second test mode - 4, 8, 16 and 30 minute timeouts |
| Passive Infrared | Dual element pyrometer and spherical Fresnel lens designed for robust detection of a walking person.* *When used with program start ballast, a 1-2 second delay from occupancy detection to lamp turn-on may be experienced. |
| Daylight Sensor | Range: 30 – 2500FC End mount sensor: Downward and upward looking daylight sensors (Direction selectable via dip switch) |
| Coverage | Indoor 360° degree (masking kit included) |
| Operating environment | Standard version: Indoor use only; Operating temperature: 32° to 149°F (0° to 65°C); Relative humidity (non-condensing): 0% to 95% |
| Construction | Sensor Module and Lens Assembly – high impact, injection-molded plastic |
| Dimensions | 4.0" Diameter x 1.5" Height |
| Weight | 7 oz. |
| Color | White |
| Mounting | End mount sensor: Mounts directly to end of fixture through extended 1/2" chase nipple For deeper body fixtures, an optional Extender Adapter positions the sensor flush or below the bottom of the reflector for a full field-of-view. |
| Certifications | Conforms to UL STD 508, UL STD 244A |
| Warranty | Five-year limited |

Ordering Information

| |
|------------------------|
| MODEL |
| WSPMUNV-360-KIT |

