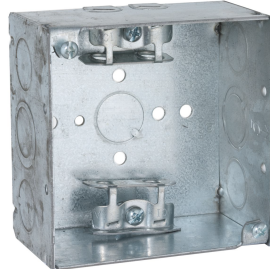




*Commercial, Industrial
and Residential Electrical Products*

4 In. Square Box, Welded, 2-1/8 In. Deep with AC/MC/ Flex Clamps, Five 1/2 In. KO's and Two TKO's

Catalog #:
248



FEATURE BENEFIT

Rugged steel box features built in clamps for {NMSC} nonmetallic sheathed cable

PRODUCT FEATURES

- Welded steel construction
- 4 In. square x 2-1/8 In. deep
- Cable clamps suitable for use with steel and alum armored cable, MCI cable, MCI-A cable, and flexible conduit
- TKO® Knockouts allow for design and installation flexibility
- Supplied with five 1/2 In. and two 1/2-3/4 In. TKO® knockouts
- Combination Phillips/slotted screw heads
- 30.3 Cu. In. capacity
- Acceptable for use in 2-hour fire rated walls

APPLICATIONS

- RACO® Boxes are installed in walls or ceilings for lighting fixtures, switches or receptacles
- Square boxes are used where multiple conductors runs are split into two or more directions to bring power to a number of electrical devices

CERTIFICATION



PRODUCT SPECIFICATIONS

UPC Number:	050169002483
Ea Length/Depth (in.):	2.188
Ea Width (in.):	4.00
Ea Height (in.):	4.00
Wt. Ea. (Lbs.):	0.958
Package Type:	Loose
Product UPC-A Labeled:	No



All RACO single-gang, two-gang, 4 In. square, and single gang gangable U.L. listed steel boxes are acceptable for use in 2-hour fire rated walls. For additional information, consult U.L. "Fire Resistance Directory" or the U.L. website at www.ul.com

PACKAGING

PK 12of5:	50050169002488
Standard Carton Qty:	25
Min Order Qty:	25

Revision 2, December 2021



A Division of Hubbell Incorporated (Delaware)

RACO
3902 W. Sample St.
South Bend, IN 46619
574-234-7151
www.hubbell.com/raco/en

