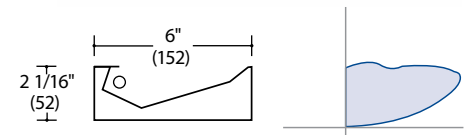


Fixture Type:  
Project Name:

### Ordering Guide

Feature	Code	Options	Description
<b>Series</b>		25	Cove 25
<b>Mounting</b>		CC	Concealed Cove
<b>Fixture distribution</b>		AI	Asymmetric Indirect
<b>Row length (in feet)</b>		____'	Enter in foot increments. Note fixture lengths below.
<b>Max length in row</b>		02 03 04 06 08	2', 610mm 3', 914mm 4', 1219mm 6', 1829mm 8', 2438mm
<b>Finish/Color</b>		C1	Matte White
<b>Lamping</b>		1T5 1T5HO	1-Light T5 Lamping 1-Light T5HO Lamping
<b>Ballast (non-dimming T5/HO)</b>		NPN	Electronic, program-start
<b>Ballast (non-dimming T8)</b>		NIN NPN NIL NPL NIH NPH	Electronic Electronic, program-start Electronic, low-wattage Electronic, low-wattage, program-start Electronic, high light output Electronic, high light output, program-start
<b>Ballast (dimming)</b>		010V LVD DALI LLS	0-10V Dimming Line Voltage Dimming Dali System Light Level Switching 50/100 See <i>Ballast</i> section for additional dimming ballast options
<b>Circuiting</b>		1C 2C AC AF	1 Circuit 2 Circuit-In board/ Out Board (2-Light only) Alternate Lamp Compartment Switch Alternate Fixture Switching
<b>Voltage</b>		UNV 120 277 347	Universal Voltage (120 or 277) 120 Volt 277 Volt 347 Volt

Optional Features	Code	Options	Description
<b>Nightlight</b>		_NL	Nightlight Circuit Required. Enter quantity. 2NL = 2 nightlight circuits/row
<b>Thru-wiring</b>		W1 W2 W3 W4	No Thru Wire Provide Normal and Emergency Thru Wiring* Provide Normal Thru Wiring Only Provide Emergency Thru Wiring Only *Only applicable when specified with emergency
<b>Adjustable Mounting Angle</b>		AMA	Adjustable Mounting Angle
<b>Corner Wiring Kit</b>		WKC	Corner Wiring Kit
<b>Covers / Lens Kits</b>		L1	Lens Kit, Dust Cover
<b>Fuse</b>		F	Fuse



### Key Features

- Luminance Control Deflector™ minimizes socket shadows
- High reflectance aluminum reflector section for maximum horizontal light projection
- High reflectance white reflector section for efficient indirect distribution

 **Quick Find** [litecontrol.com](http://litecontrol.com) **25-CC**

### Details

**Construction:**

Steel housing. Ends provided with 7/8" diameter hole to accommodate wiring.

**Fixture length:**

Actual fixture lengths are sized to match T5 lamp lengths. See below.

- 03 (34 3/8", 873mm)
- 04 (46 1/4", 1175mm)
- 06 (68 5/8", 1743mm)
- 08 (92 1/4", 2343mm)

**Distribution:**

100/0 asymmetric indirect

**Finish/Color:**

Visit [www.litecontrol.com/finishes](http://www.litecontrol.com/finishes) for details.

**Lamping:**

Available in one-lamp T5 or T5HO cross sections.



1-T5 or 1-T5HO

**Ballast:**

Electronic Ballast (ELB), high power factor, thermally protected Class P, Sound Rated A, less than 10% THD, manufactured by a UL Listed manufacturer, as available, determined by Litecontrol. Ballasts with a voltage range of 120 to 277 will be used when fixture configuration and ballast availability allow. The minimum number of ballasts will be used.

**Additional Dimming Ballast Options:**

- LE30 Lutron EcoSystem-3 Wire (Normal Ballast Factor)
- LEH0 Lutron EcoSystem-H Series (Normal Ballast Factor)
- LEH7 Lutron EcoSystem-H Series (High Ballast Factor)
- LEI0 Lutron EcoSystem-Intelligent (Normal Ballast Factor)
- LH3D Lutron HiLume 3D-3 Wire (Normal Ballast Factor)
- LH37 Lutron HiLume 3D-3 Wire (High Ballast Factor)
- LHHL Lutron HiLume-Traditional (Normal Ballast Factor)
- LHID Lutron HiLume-3D Intelligent (Normal Ballast Factor)
- LHI7 Lutron HiLume-3D Intelligent (High Ballast Factor)

**Circuiting:**

- 1C (1 Circuit) Fixture wired for a single circuit.
- 2C (2 Circuit) Inline lamps are switched separately.
- AC (alternate lamp compartment switching) Fixtures wired so every other lamp section can be separately switched/dimmed
- AF (alternate fixture switching) Fixtures wired so every other fixture segment can be separately switched/dimmed

**Nightlight:**

See separate LC-Nightlight spec sheet for additional details.

**Emergency:**

Battery-powered ballast from a listed manufacturer will operate one lamp for 90 minutes.

**Thru wiring:**

See separate LC-Thruwire spec sheet for additional details.

**High Performance Reflector:**

Die-formed specular aluminum reflector and clear lens which provides greater peak intensity at a lower angle.

**Adjustable Mounting Angle Option:**

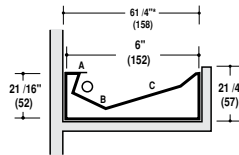
Snap-on accessory which tilts fixture to lower beam throw. Throw is lowered by 5° or 10°. Size the cove to hide lamps and fixture. This should only be considered if viewing angles prevent a direct view of the raised portion of the fixture, or if a cut-off angle below horizontal is deemed acceptable.

**Corner Wiring Kit**

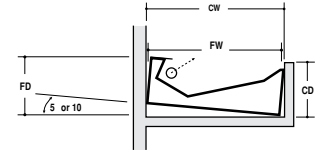
Provides the advantages of pre-wiring around corners. Make connections at each end of the flexible whip, push wires into fixtures, then snap onto headers. Specify **WKC** (with push-in quick-connects).

**Mounting:**

Cove provided by others. Interior cove dimensions should allow for 2 1/16" x 6" fixture cross-section to fit within cove, taking into consideration as-built tolerances. For maximum efficiency, wall and ceiling above cove should have matte surfaces with high reflectances. See design guidelines below. Maximum fixture weight per foot is two and a half pounds.



\* Recommended minimum interior cove height



Adjustable Mounting Angle (AMA5, AMA10)

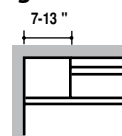
Angle of Tilt	Ordering Option	Fixture Depth (FD)	Fixture Width (FW)	Recommended Cove Depth (CD)	Recommended Cove Width (CW)
0°	(standard)	2 1/16"	6"	2 1/4"	6 1/4"
5°	AMA	2 9/16"	6 3/16"	2 1/4"	6 1/2"
10°	AMA	3 1/16"	6 1/4"	2 1/4"	6 1/2"

\*Note: When using the AMA option, refer to photometric data to ensure that cove height does not interfere with peak output.

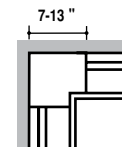
**Recommended fixture positioning:**

Positioning at Ends and Corners

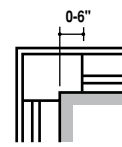
**Single row end**



**Inside corner**



**Outside corner**



**Lens**

**Power feed:**

Fixture intended to be wired with 3/8" flexible whip.

**Fixture weight:**

2.5 lbs/ft.

**Ratings:**

UL listed for damp locations. IBEW. AF of L.

### Photometry

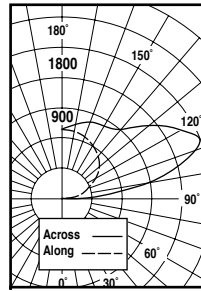
**Fixture:** 25-CC-AI-04-Cx-1T5HO

**Lamping:** 1-T5HO

**Efficiency:** 86.9%

**Distribution:** 100/0

**Test report:** ITL49604



ZONAL LUMEN SUMMARY			
ZONE	LUMENS	% LAMP	% LUMINAIRE
0-90°	0	0.0	0.0
90-120°	1701	34.0	39.2
90-130°	2409	48.2	55.5
90-150°	3549	71.0	81.7
90-180°	4344	86.9	00.0
0-180°	4344	86.9	00.0