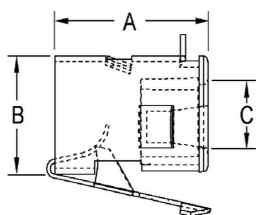


REDI-LOC® SNAP-IN TYPE CONNECTORS

REDI-LOC® Cable Connectors Steel
N/A

B71



Catalog #: 2701-8

APPLICATIONS

RACO REDI-LOC® metal clad cable connectors are designed for use in dry locations for connecting MCI, MCI-A, AC, and HCF cable into a box or enclosure
RACO REDI-LOC® II is used to terminate and secure MC, MCI, MCI-A, and AC into a 1/2 in. knockout

PRODUCT FEATURES

- No tools needed to assemble to end of cable or to install into box or enclosure
- Preassembled anti-short bushing will not fall out during installation
- Easy installation - push the cable into the fitting, push connector into the box or enclosure
- Can be removed without tools, and is reusable
- Rugged one-piece design
- Fits all standard 1/2 in. knockouts
- Made from steel, and nylon (bushing)
- Zinc electro plated for corrosion protection
- Tri-lingual (English, Spanish, and French) installation instructions included in each unit carton
- UPC bar coded fittings are individually polybagged with a preprinted UPC-A bar code, and packaged in pre-scored tear top cartons for an attractive presentation

UL LISTED

File E195966

CULUS

N/A

US PATENTS

US Patents 6,034,326 and 6,020,557

GENERAL PRODUCT INFORMATION

Trade Size: 3/4 in.
Cable Size: MCI: AL .590 - .680; MCI: Steel .565 - .659; AC: Steel/AL 10-3 to 8-3 (.590)

DRAWING DIMENSIONS

Dimension A: 1.070 in.
Dimension B: 1.074 in.
Dimension C: .500 in.

PACKAGING

Package Type: Carton
Std. Pkg.: 1
Ship Carton Qty.: 20
Product UPC-A Labeled: Yes
Weight (Lbs. Per/C): 5.30
Ship Carton Length (in.): 6.25
Ship Carton Width (in.): 4.50
Ship Carton Height (in.): 2.88
Ctn Weight (Lbs.): 1.06
UPC Number: 050169270189
I2of5: 50050169270184