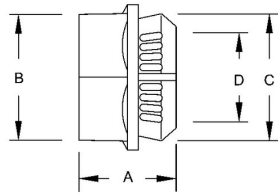




TWO PIECE CONNECTORS AND EMT TO RIGID THREADED/COMPRESSION COMBINATION COUPLINGS

Two-Piece Connector Die Cast Zinc
N/A

B18



Catalog #: 2703

APPLICATIONS

For use in dry locations to bond EMT conduit to a box or enclosure.
RACO 1/2 in. and 3/4 in. two-piece connectors provide concrete-tight connections.

PRODUCT FEATURES

Rugged metallic construction insures mechanical protection for the raceway
N/A

UL LISTED

Standard 514B

GENERAL PRODUCT INFORMATION

Trade Size: 3/4 in.
Country of Origin: USA

DRAWING DIMENSIONS

Dimension A: 13/16 in.
Dimension B: 1-5/16 in.
Dimension C: 1-5/32 in.
Dimension D: 13/16 in.

PACKAGING

Package Type: Carton
Ship Carton Qty.: 50
Product UPC-A Labeled: No
Weight (Lbs. Per/C): 4.824
Ship Carton Length (in.): 5.250
Ship Carton Width (in.): 3.625
Ship Carton Height (in.): 6.000
Ctn Weight (Lbs.): 4.824
UPC Number: 050169027035
I2of5: 30050169027036