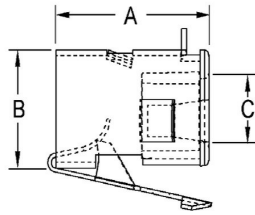




## REDI-LOC® SNAP-IN TYPE CONNECTORS

REDI-LOC® II Cable Connectors Steel  
N/A

B71



Catalog #: 2720AJ

### APPLICATIONS

RACO REDI-LOC® metal clad cable connectors are designed for use in dry locations for connecting MCI, MCI-A, AC, and HCF cable into a box or enclosure  
RACO REDI-LOC® II is used to terminate and secure MC, MCI, MCI-A, and AC into a 1/2 in. knockout

### PRODUCT FEATURES

- No tools needed to assemble to end of cable or to install into box or enclosure
- Preassembled anti-short bushing will not fall out during installation
- Easy installation - push the cable into the fitting, push connector into the box or enclosure
- Can be removed without tools, and is reusable
- Rugged one-piece design
- Fits all standard 1/2 in. knockouts
- Made from steel, and nylon (bushing)
- Zinc electro plated for corrosion protection
- Tri-lingual (English, Spanish, and French) installation instructions included in each unit carton
- UPC bar coded fittings are individually polybagged with a preprinted UPC-A bar code, and packaged in pre-scored tear top cartons for an attractive presentation

### UL LISTED

File E195966

### CULUS

N/A

### US PATENTS

US Patents 6,034,326 and 6,020,557

### GENERAL PRODUCT INFORMATION

Trade Size:	1/2 in.
Cable Size:	AC: Steel/AL 14-3 to 10-3; MC/MCI: Steel/AL 12-2 to 10-3; MCI-A: Steel/AL 12-3 to 10-3; HCF: AL 12-3 to 10-3, 3/8 in. RWF MC: Steel/AL; Cable range
dia.: .460 in. dia. Min to .600 in. max	

### DRAWING DIMENSIONS

Dimension A:	1.65 in.
Dimension B:	.714 in.
Dimension C:	.405 in.

### PACKAGING

Package Type:	Carton
Std. Pkg.:	50
Ship Carton Qty.:	500
Product UPC-A Labeled:	No
Weight (Lbs. Per/C):	4.00
Ship Carton Length (in.):	6.25
Ship Carton Width (in.):	4.50
Ship Carton Height (in.):	2.88
Ctn Weight (Lbs.):	20.00
UPC Number:	050169927205
I2of5:	50050169927200