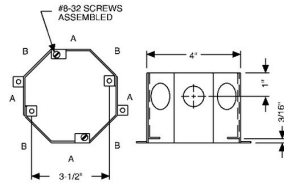




CONCRETE RINGS, CEILING BOXES & COVER PLATES

Hung Ceiling Box
3-1/2 in. Deep, includes an 890 cover

A57



Catalog #: 280

APPLICATIONS

RACO® Concrete rings are used with poured deck (floor) in high-rise construction. These boxes are installed on wooden or steel concrete forms. After the forms are removed, the box is flush with the concrete.

PRODUCT FEATURES

- Flat sides provide excellent contact for locknuts
- External ears are used to nail the ring to the wood form
- Top cover is removable for before-pour work
- Ears on inside of box are for fixtures
- Waxed fixture ears prevent concrete from interfering with the threads
- A variety of covers are available
- Cover plate must be ordered separately with all RACO® concrete rings
- N/A

UL LISTED

File E195978

GENERAL PRODUCT INFORMATION

Wiring System: Conduit

RECOMMENDED MAX LOAD

Ceiling Fan (Dynamic) Lbs.: No
Fixture (Static) Lbs.: ---

CONFIGURATION

Drawn or Welded: Welded
Side Knockout(s): Double Row KO's (8) 1/2 in. and (8) 3/4 in.

PRODUCT MEASUREMENTS

Depth: 3-1/2 in.
Cubic Inches (cm3): 43.0 (704.6)
Wt. Ea. (Lbs.): 1.257
Product Length (in.): 4.88
Product Width (in.): 4.00
Product Height (in.): 5.00

PACKAGING

Minimum Pack Qty.: 20
Std. Pkg.: 20
Product UPC-A Labeled: No
Weight (Lbs. Per/C): 125.70
Ship Carton Length (in.): 20.88
Ship Carton Width (in.): 9.00
Ship Carton Height (in.): 8.50
Ctn Weight (Lbs.): 25.14
Pallet Qty: 1100
UPC Number: 050169002803
12of5: 50050169002808