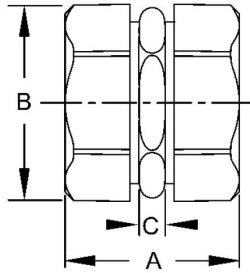




EMT COMPRESSION COUPLINGS - DIE CAST ZINC

Compression Couplings Die Cast Zinc
N/A

B14



Catalog #: 2823

APPLICATIONS

For use to couple two ends of EMT conduit.
RACO Compression couplings are suitable for applications above 600V

PRODUCT FEATURES

1/2 in. to 4 in. couplings provide concrete-tight connections
Rugged metallic construction provides mechanical protection for the raceway
Hex compression nuts assure easy wrench installation
N/A

UL LISTED

File E195970

CSA

C22.2 No. 18

GENERAL PRODUCT INFORMATION

Trade Size: 3/4 in.

DRAWING DIMENSIONS

Dimension A: 1-25/32 in.
Dimension B: 1-7/64 in.
Dimension C: 7/32 in.

PACKAGING

Package Type: Carton
Std. Pkg.: 25
Ship Carton Qty.: 250
Product UPC-A Labeled: No
Weight (Lbs. Per/C): 16.20
Ship Carton Length (in.): 18.89
Ship Carton Width (in.): 10.59
Ship Carton Height (in.): 6.81
Ctn Weight (Lbs.): 44.89
UPC Number: 050169028230
I2of5: 50050169028235