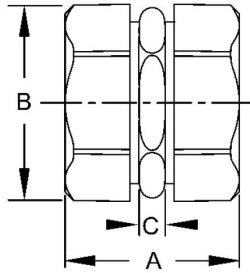




EMT COMPRESSION COUPLINGS - DIE CAST ZINC

Compression Couplings Die Cast Zinc
N/A

B14



Catalog #: 2826

APPLICATIONS

For use to couple two ends of EMT conduit.
RACO Compression couplings are suitable for applications above 600V

PRODUCT FEATURES

1/2 in. to 4 in. couplings provide concrete-tight connections
Rugged metallic construction provides mechanical protection for the raceway
Hex compression nuts assure easy wrench installation
N/A

UL LISTED

File E195970

CSA

C22.2 No. 18

GENERAL PRODUCT INFORMATION

Trade Size: 1-1/2 in.

DRAWING DIMENSIONS

Dimension A: 2-11/32 in.
Dimension B: 2 in.
Dimension C: 13/32 in.

PACKAGING

Package Type: Carton
Std. Pkg.: 10
Ship Carton Qty.: 40
Product UPC-A Labeled: No
Weight (Lbs. Per/C): 67.30
Ship Carton Length (in.): 24.21
Ship Carton Width (in.): 11.14
Ship Carton Height (in.): 6.29
Ctn Weight (Lbs.): 26.92
UPC Number: 050169028261
I2of5: 50050169028266