

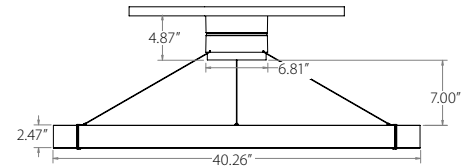
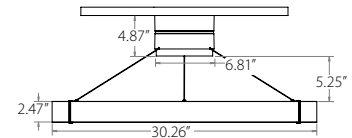
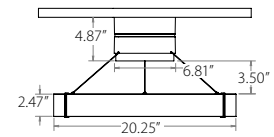
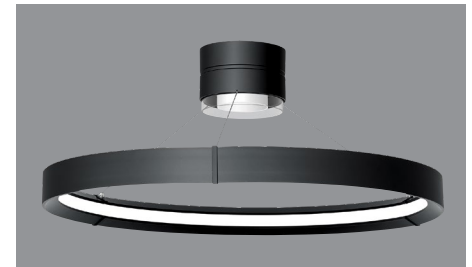
Inde-Pendant Surface Direct

Fixture Type:

Project Name:

Ordering Guide

Feature	Code	Options	Description
Series		32L	Inde-Pendant
Configurations		CR20 CR30 CR40	Cylinder + 20" Diameter Ring Cylinder + 30" Diameter Ring Cylinder + 40" Diameter Ring
Mounting		S	Surface
Fixture distribution		D	Direct
Primary Finish		C1 C4 C5 CC	Matte White (Default) Machined Aluminum Carbon Black Custom Color
Accent Finish		/AC1 /AC4 /AC5 /ACC	Matte Finish (Default) Machined Aluminum Carbon Black Custom Color
Color temperature		30K 35K 40K	3000K 3500K 4000K
Cylinder Direct Output <i>(specifiable in 50 lumens increments)</i>		D060 D200	600 2000
Ring Output <i>(specifiable in 50 lumens increments)</i>		R035 R230	350 2300
Driver		NDM D01 DALI	Non Dimming 1% Dimming, 0-10V DALI
Circuiting		2C	2 Circuit *See 32L Installation instructions for wiring options to address Nightlight and Single Circuiting options available
Voltage		UNV 347	Universal Voltage (120-277) 347 Volt* *Excludes DALI Dimming Option
Ceiling Type		GDW PT	Grid or Drywall (Default) Plaster Trim
Optional Features	Code	Options	Description
Chicago Environmental Air Modification		CCEA	Chicago Environmental Air Modification



Key Features

- Variable Intensity technology provides specifiable lumen output/wattage
- 2.5 SDCM color variation
- Remote-mounted driver assembly
- Customizable finish variations



Quick Find litecontrol.com

32L-CR-S-D

Inde-Pendant Surface Direct

Details

Construction:

Driver enclosure (GDW & PT) - Die formed steel. Canopy assembly contains die cast aluminum housing with steel canopy fascia plate that secures to housing using neodymium magnets. Canopy contains nylon bushings as power over aircraft isolation.

6" Ceiling depth required for driver installation

Cylinder- Die cast aluminum cylinders containing nylon bushings as power over aircraft isolation.

Ring-Roll formed extruded aluminum joined by die cast aluminum brackets containing nylon bushings as power over aircraft isolation.

Ring collar- Die cast aluminum with injection molded plastic insert for cable insulation.

Diffuser:

Cylinder- Inner lens is soft diffuse acrylic.

Cylinder- Outer lens is clear acrylic.

Ring- Soft diffuse flexible acrylic film.

Finish/Color:

Visit www.litecontrol.com/finishes for details.

CCT:

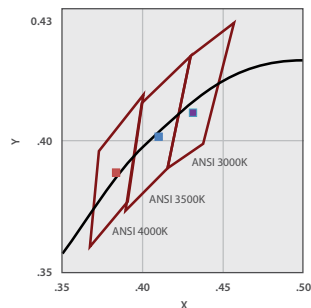
30K-3000K output multiplier (0.97)

35K-3500K output multiplier (1.00)

40K-4000K output multiplier (1.02)

*All photometric files below based off 3500K. Any deviation from this color temperature is subject to have lumen output altered by multiplier shown.

Ex. 2000 lm x .97=1940 lm in 3000 K



Color Variation:

2.5 step MacAdam ellipse

Driver Lumen Output Range:

Ring

D01 or NDM: R035-R230

DALI: R035-R230

347V: R065-R230

Direct

D01 or NDM: D060-D200

DALI: D060-D200

347V: D110-D200

Output (VI technology):

Variable Intensity (VI) technology allows precise specification of fixture output/wattage. Fixture will be programmed and labeled to specification. Specify each in 50 lumen increments within the below range:

	Lumens	Nomenclature
Cylinder Direct		
Min:	600	D060
Max:	2000	D200
Ring		
Min:	350	R035
Max:	2300	R230

Driver:

NDM: Non-dimming. Fixture will be wired for fixed light output.

D01: 100%-1% dimming range. Fixture will be wired for low voltage 0-10V dimming control.

DS1: Soft-Start 100%-1% dimming range. Fixture will be wired for low voltage 0-10V dimming control.

D00: Dim-to-off 100%-1% Dimming range. Fixture will be wired for low voltage 0-10V dimming

DS0: Soft-Start Dim-to-off 100%-1% dimming range. Fixture will be wired for low voltage 0-10V dimming control.

DALI: DALI compatible

*See driver limitations in Driver lumen output ranges section below.

Field Accessibility:

LED drivers and light engines can be accessed and removed from below ceiling. Contact factory for details.

Circuiting:

2C (2 Circuit) Fixture wired for dual circuits.

Rated Life (LED Board):

Tested in accordance to LM79-2008 & derived from EPA TM-21 calculator
L70: >51,000 hours

Rated Life (Driver):

100,000 hours

Fixture weight:

10 lbs

Ratings:

CSA listed for damp locations. IBEW. AF of L.

This product qualifies as a "designated country construction material" per FAR 52.225-11 Buy American-Construction.

Materials under Trade Agreements effective 8/14/2020.

See Buy American Solutions.



Warranty:

LED boards- 5 years

LED drivers (standard)- 5 years

LED drivers (Lutron)- 3 years

Quick Find litecontrol.com

32L-CR-S-D

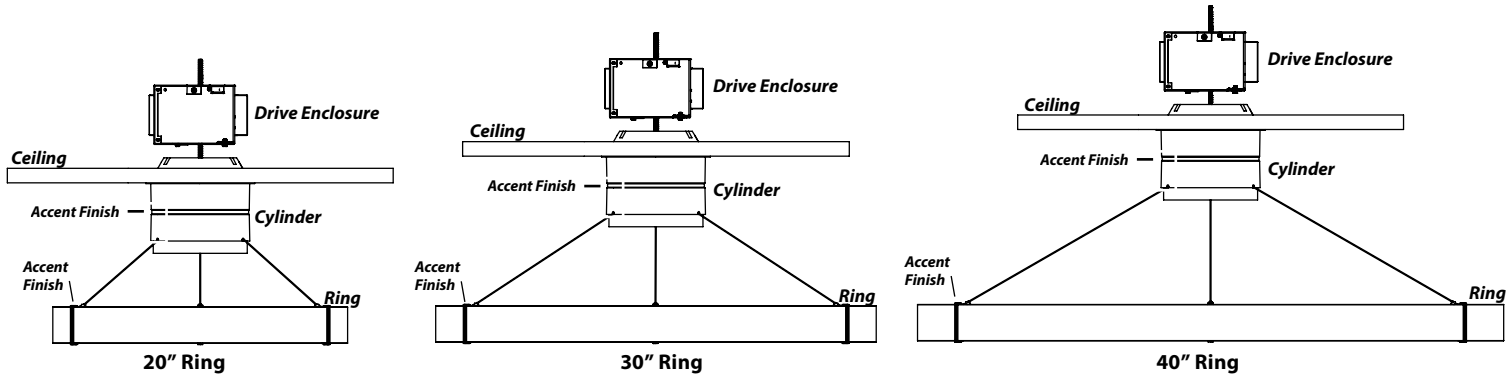
Inde-Pendant Surface Direct

Details (continued)

Planning for Installation:

See below images for installation application.

*For complete details, reference Installation Instructions at Litecontrol.com.



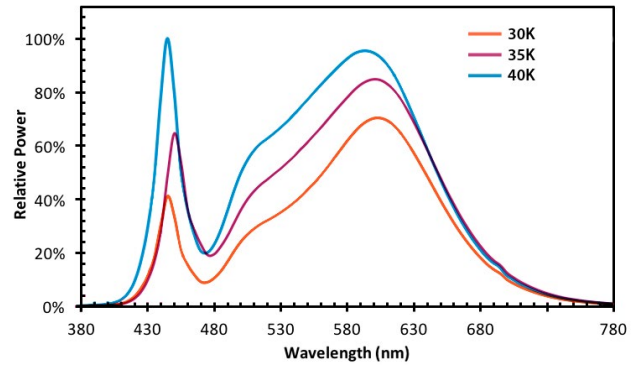
Inde-Pendant Surface Direct

Cylinder Details

Color Characteristics:

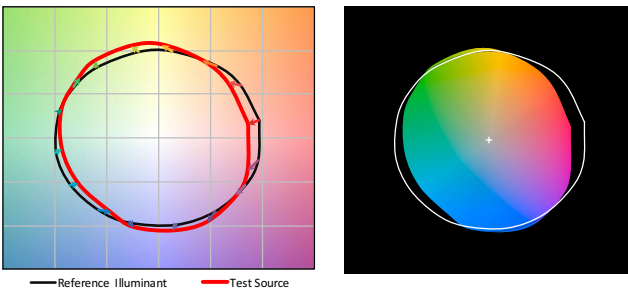
Value	30K	35K	40K
Rf	81	84	81
Rg	98	96	97
CCT (K)	3014	3435	3911
Duv	-0.0004	0.0016	0.0017
x	0.4353	0.4108	0.3857
y	0.4025	0.3973	0.3837
CIE Ra	81	83	81

Spectral Distribution:

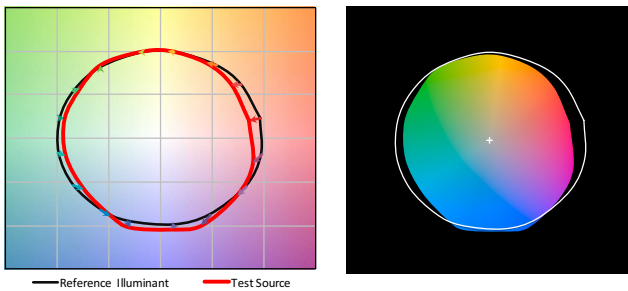


Color Vector Graphic:

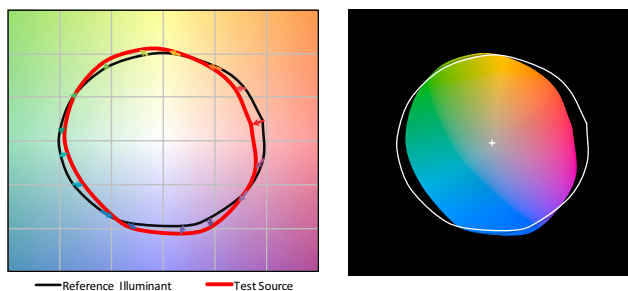
30K:



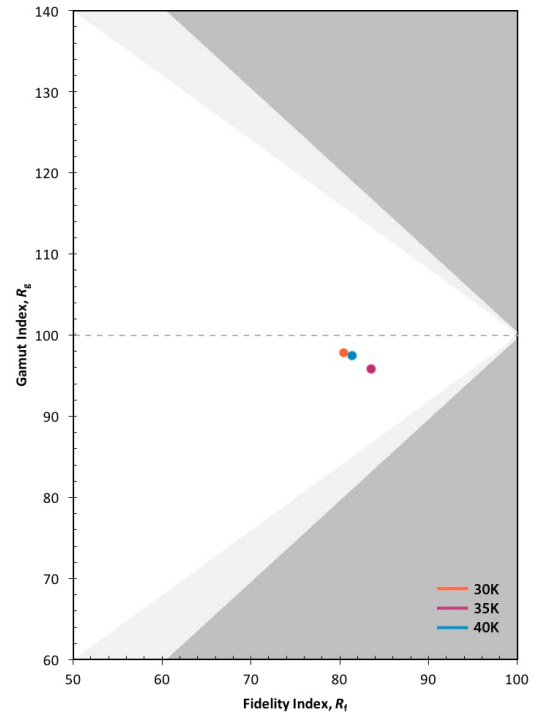
35K:



40K:



Color Gamut/Fidelity Plot:



CRI:

80 minimum

CCT	CRI	R1	R2	R3	R4	R5	R6	R7	R8	R9	R10	R11	R12	R13	R14
30K	81	79	88	97	80	80	87	82	57	0	74	80	73	80	98
35K	83	81	90	96	82	82	87	85	63	9	76	81	67	83	98
40K	81	79	86	93	82	80	83	85	63	2	69	82	67	80	96

Quick Find litecontrol.com

32L-CR-S-D

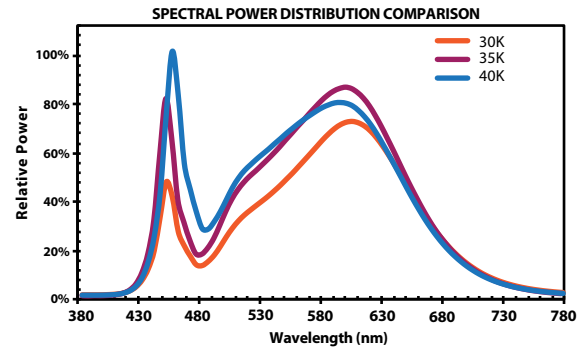
Inde-Pendant Surface Direct

Ring Details

Color Characteristics:

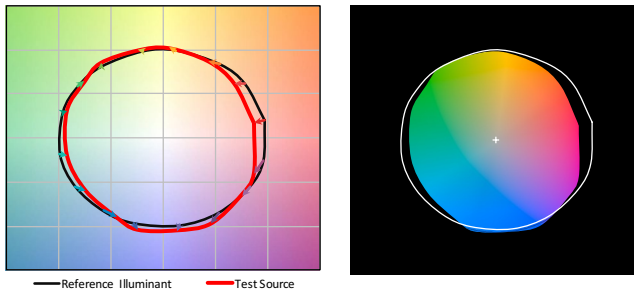
Value	30K	35K	40K
Rf	83	82	82
Rg	97	97	94
CCT (K)	3101	3508	4086
Duv	0.0001	-0.0001	0.0015
x	0.4300	0.4048	0.3777
y	0.4018	0.3902	0.3781
CIE Ra	83	83	84

Spectral Distribution:

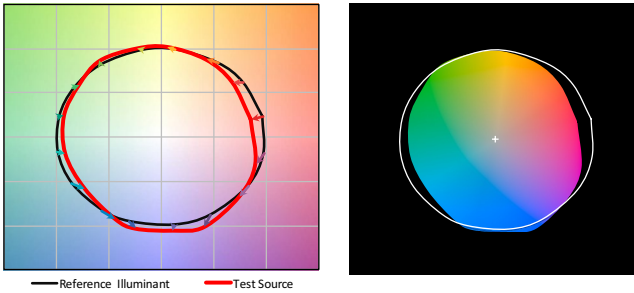


Color Vector Graphic:

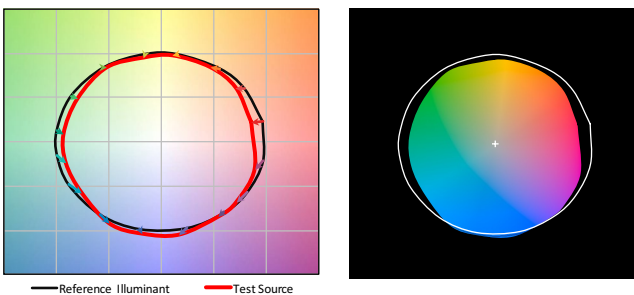
30K:



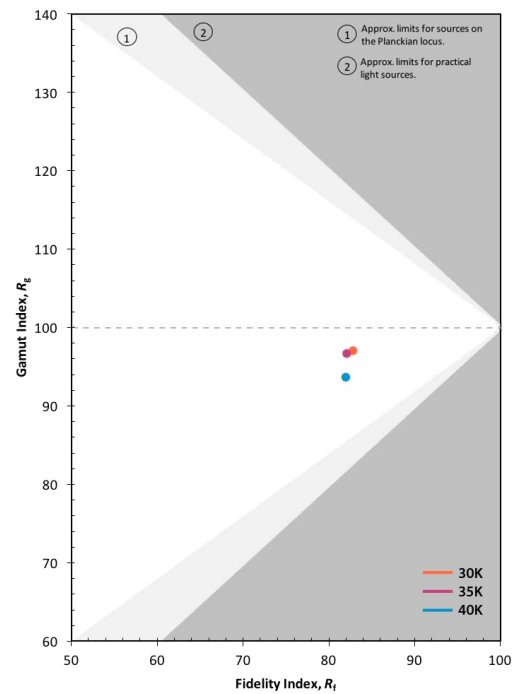
35K:



40K:



Color Gamut/Fidelity Plot:



CRI:

80 minimum

CCT	CRI	R1	R2	R3	R4	R5	R6	R7	R8	R9	R10	R11	R12	R13	R14
30K	83	81	90	96	82	81	87	85	63	14	76	80	67	83	98
35K	83	81	89	95	82	81	85	86	64	11	73	81	63	82	97
40K	84	83	91	96	82	82	87	87	67	18	78	80	59	85	98

Quick Find litecontrol.com

32L-CR-S-D

Inde-Pendant Surface Direct

Photometry

Fixture: 32L-CR30-S-D-cx/cx-30K-D245/R215

CCT: 3000K

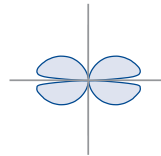
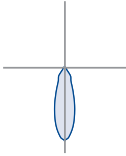
Output: D245/R215

Nominal lumens: 4600 lumens

Efficacy: 70 lm/W

Test report: 32L-CR30-P-ID-cx/cx-30K-I260-D245/R215.IES

*Lumen and efficacy value scaled from above report



Performance- Cylinder Direct

Nomenclature	Lumens/unit	W/unit	Efficacy
D060	600	7.7	78
D065	650	8.1	80
D070	700	8.6	82
D075	750	9.0	84
D080	800	9.4	85
D085	850	9.8	87
D090	900	10.2	88
D095	950	10.7	89
D100	1000	11.1	90
D105	1050	11.5	91
D110	1100	11.9	92
D115	1150	12.4	93
D120	1200	12.8	94
D125	1250	13.2	95
D130	1300	13.6	95
D135	1350	14.2	95
D140	1400	14.7	95
D145	1450	15.3	95
D150	1500	15.8	95
D155	1550	16.4	95
D160	1600	16.9	95
D165	1650	17.5	95
D170	1700	18.0	94
D175	1750	18.6	94
D180	1800	19.1	94
D185	1850	19.7	94
D190	1900	20.2	94
D195	1950	20.8	94
D200	2000	21.4	93

(wattage may vary up to 5% from published)

Performance- Ring

Nomenclature	Lumens/unit	W/unit	Efficacy
R035	350	5.7	61
R040	400	6.4	63
R045	450	7.0	64
R050	500	7.7	65
R055	550	8.4	66
R060	600	9.0	67
R065	650	9.7	67
R070	700	10.3	68
R075	750	11.0	68
R080	800	11.6	69
R085	850	12.3	69
R090	90	13.0	69
R095	950	13.6	70
R100	1000	14.3	70
R105	1050	14.9	70
R110	1100	15.6	71
R115	1150	16.3	71
R120	1200	16.9	71
R125	1250	17.6	71
R130	1300	18.4	71
R135	1350	19.1	71
R140	1400	19.8	71
R145	1450	20.6	71
R150	1500	21.3	70
R155	1550	22.0	70
R160	1600	22.7	70
R165	1650	23.5	70
R170	1700	24.2	70
R175	1750	24.9	70
R180	1800	25.7	70
R185	1850	26.4	70
R190	1900	27.1	70
R195	1950	27.8	70
R200	2000	28.6	70
R205	2050	29.3	70
R210	2100	30.1	70
R215	2150	30.9	70
R220	2200	31.7	69
R225	2250	32.5	69
R230	2300	33.3	69

(wattage may vary up to 5% from published)

 **Quick Find** litecontrol.com

32L-CR-S-D