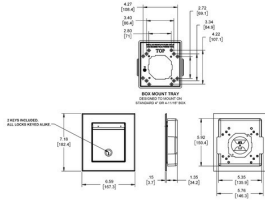




Single Gang Multi-Configuration Flip Covers

**One Gang Universal Heavy Cast Aluminum Covers  
4-in-1**

D10.1



Catalog #: 4600RAC

**APPLICATIONS**

BELL Heavy Duty Flush covers provide weatherproof protection from the elements. They are lockable to keep unauthorized users out. The covers easily mount to any 3-3/4" through 4-11/16" Square box

**PRODUCT FEATURES**

- Heavy Duty Cast Aluminum construction
- Cobra Cam lock with 2 keys provided
- 4-in-1 configuration
- Irradiation crosslinked polyethylene foam gasket
- Mounting hardware included

**WEB TOOLS**

Product Video Link

<http://www.hubbell-rtb.com/r-resources.installation-videos.exc.bell-hvy-duty-cast-flush-wp-cvr-video>

Literature Link

[http://www.hubbell-rtb.com/literature\\_pdf/BL-211.pdf](http://www.hubbell-rtb.com/literature_pdf/BL-211.pdf)

**CERTIFICATIONS**

**UL LISTED**

File E212322

**CULUS**

Yes

**NEMA**

3R Rated

**NEC**

2014 Compliant (article 406.9A)

**GENERAL PRODUCT INFORMATION**

Color: Gray

**CONFIGURATION**

Gangs: 1

**PRODUCT MEASUREMENTS**

Wt. Ea. (Lbs.): 2.70

**PACKAGING**

Package Type:	Boxed
Minimum Pack Qty.:	1
Std. Pkg.:	1
Ship Carton Qty.:	1
Product UPC-A Labeled:	Yes
Weight (Lbs. Per/C):	270.00
Ship Carton Length (in.):	7.75
Ship Carton Width (in.):	7.00
Ship Carton Height (in.):	1.75
Ctn Weight (Lbs.):	2.70