

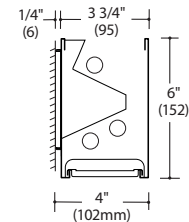
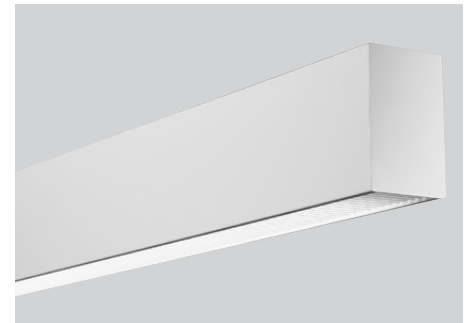
MOD 46 Wall Indirect/Direct

Fixture Type:

Project Name:

Ordering Guide

Feature	Code	Options	Description
Series		46	MOD
Mounting		W	Wall
Fixture distribution		ID	Indirect direct
Row length (in feet)		----	Enter in foot increments. Note fixture lengths below.
Max length in row		02 03 04 06 08	2', 610mm 3', 914mm 4', 1219mm 6', 1829mm 8', 2438mm
Downlight diffuser		BW SGL XA PAT19	Blade Baffle, White Soft Glow Lens 3/16" Conical Prismatic 3/16" Square Prismatic
Uplight Diffuser		CA PAT19 XA	Clear Acrylic Lens 3/16" Square Prisms 3/16" Conical Prisms
Finish/Color		C1 C2 C3 C4 C5 C6 CC	Matte White (Default) Textured, Matte White Light Silver Machined Aluminum Carbon Black Textured, Camera Black Custom Color
Lamping (Uplight)		NONE 1T5 1T5HO 1T8	No Up Light 1-Light T5 Lamping 1-Light T5HO Lamping 1-Light T8 Lamping
Lamping (Downlight)		NONE 1T5 1T5HO 1T8 2T5 2T5HO 2T8	No Down Light 1-Light T5 Lamping 1-Light T5HO Lamping 1-Light T8 Lamping 2-Light T5 Lamping 2-Light T5HO Lamping 2-Light T8 Lamping
Ballast (non-dimming T5/HO)		NPN	Electronic, program-start
Ballast (non-dimming T8)		NIN NPN NIL NPL NIH NPH	Electronic Electronic, program-start Electronic, low-wattage Electronic, low-wattage, program-start Electronic, high light output Electronic, high light output, program-start
Ballast (dimming)		010V LVD DALI LLS	0-10V Dimming Line Voltage Dimming Dali System Light Level Switching 50/100 See <i>Ballast</i> section for additional dimming ballast options
Circuiting		1C 2C AC AF	1 Circuit 2 Circuit-In Board/ Out Board Alternate Lamp Compart Switch Alternate Fixture Switching
Voltage		UNV 120 277 347	Universal Voltage 120 Volt 277 Volt 347 Volt



Key Features

- 4" aperture steel construction

CS™ Control Solutions available

Quick Find litecontrol.com

46-W-ID

MOD 46 Wall Indirect/Direct

Ordering Guide (continued)

Optional Features	Code	Options	Description
Nightlight		_NL	Nightlight Circuit Required. Enter quantity. 2NL = 2 nightlight circuits/row
Emergency		_EF	Emergency Battery Required. Enter quantity. 2EF = 2 emergency batteries/row
Automatic Transfer Switch		_ATS	Automatic Transfer Switch Required. Enter quantity. 2ATS = 2 automatic transfer switches/row
Thru-wiring		W1 W2 W3 W4	No Thru Wire Provide Normal and Emergency Thru Wiring* Provide Normal Thru Wiring Only Provide Emergency Thru Wiring Only *Only applicable when specified with emergency
Sensors		_SD2	Daylight Sensor Required. Enter quantity. 2SD2= 2 daylight sensors/row
Data connection		_DCF	Data connection cables required. Enter quantity. 2DCF = 2 cables/row
Pattern boxes		PBE PBI PBC PBT PBX	Pattern Box, "E" End Pattern Box, "I" Intermediate Pattern Box, "C" Corner Pattern Box, "T" Shape Pattern Box, "X" Shape
Fuse		F	Fuse

MOD 46 Wall Indirect/Direct

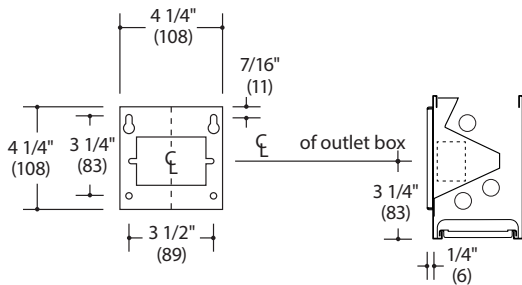
Details

Construction:

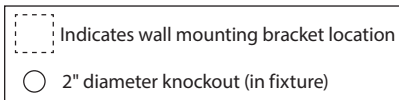
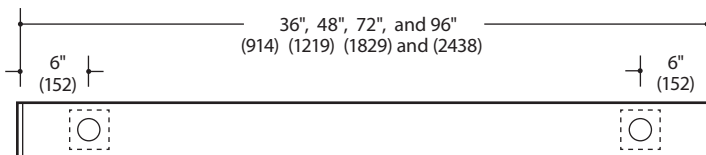
Housing-steel.
End caps-steel. Flat style.

Mounting:

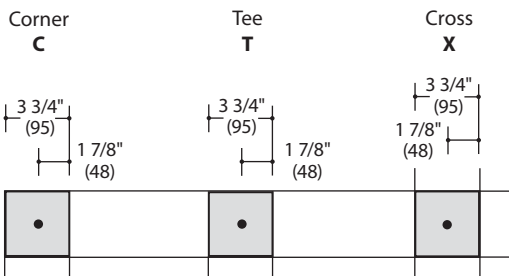
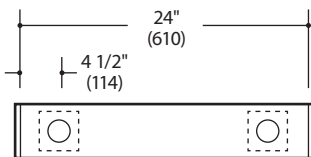
Wall Bracket



Individual Fixture - 3', 4', 6' and 8'



Individual Fixture - 2'



Distribution:
Indirect/Direct

Downlight diffuser:

BW-Blade Baffle, White
SGL-Soft Glow Lens
XA-3/16" Conical Prismatic
PAT19-3/16" Square Prismatic

Finish/Color:

Visit www.litecontrol.com/finishes for details.

Lamping:

Available in one-lamp or two-lamp T5/T5HO & T8 configurations for uplight and downlight chambers.

Cross-section lamping



Ballast:

Electronic Ballast (**ELB** - for T8 lamping or **ELB/PS** - for T5 or T5HO lamping), high power factor, thermally protected Class P, Sound Rated A, less than 10% THD, manufactured by a UL Listed manufacturer, as available, determined by Litecontrol. Ballasts with a voltage range of 120 to 277 will be used when fixture configuration and ballast availability allow. The minimum number of ballasts will be used.

Additional Dimming Ballast Options:

LE30	Lutron EcoSystem-3 Wire	(Normal Ballast Factor)
LEH0	Lutron EcoSystem-H Series	(Normal Ballast Factor)
LEH7	Lutron EcoSystem-H Series	(High Ballast Factor)
LEI0	Lutron EcoSystem-Intelligent	(Normal Ballast Factor)
LH3D	Lutron HiLume 3D-3 Wire	(Normal Ballast Factor)
LH37	Lutron HiLume 3D-3 Wire	(High Ballast Factor)
LHHL	Lutron HiLume-Traditional	(Normal Ballast Factor)
LHID	Lutron HiLume-3D Intelligent	(Normal Ballast Factor)
LHI7	Lutron HiLume-3D Intelligent	(High Ballast Factor)

Circuiting:

1C-1 Circuit
2C-2 Circuit-Up In-board/Out-Board
AC-Alternate Lamp Compartment Switch
AF-Alternate Fixture Switching

Nightlight:

See separate LC-Nightlight spec sheet for additional details.

Emergency:

Battery-powered ballast from a listed manufacturer will operate one lamp for 90 minutes.

Thru wiring:

See separate LC-Thruwire spec sheet for additional details.

Fuse:

Slow or fast blow; determined by Litecontrol.

Ratings:

UL listed for damp locations. IBEW. AF of L.

Warranty:

1 year
see www.litecontrol.com for details

