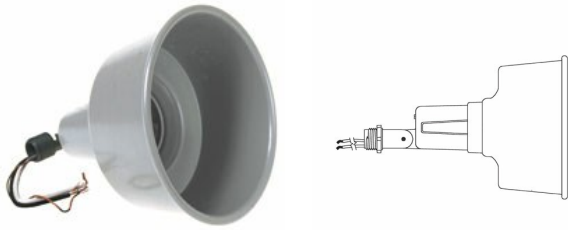




**LAMP HOLDERS**

**Architectural Lampholders**  
**75-150 Watt Par 38 Lamps**

**D23**



Catalog #: 5613-1

**APPLICATIONS**

For general outdoor lighting in wet, damp or dry locations  
May be used with BELL® cluster covers and boxes

**PRODUCT FEATURES**

- Rugged die cast construction
- State-of-the-art powder coat finish provides maximum weatherability and scratch resistance
- Locking swivel knuckle assures positive lamp positioning and provides pin-point directional aiming
- Extra long wire leads for easy hook-up
- Porcelain socket
- Inside Gasket
- Multi-lingual instructions in each package
- 1/2 in. locknut
- N/A

**UL LISTED**

Standard 1598

**CSA**

C22.2 No. 18

**GENERAL PRODUCT INFORMATION**

Color: White

**PRODUCT MEASUREMENTS**

Wt. Ea. (Lbs.): 1.010

**PACKAGING**

Package Type:	Shrink
Std. Pkg.:	4
Product UPC-A Labeled:	Yes
Weight (Lbs. Per/C):	101.00
Ship Carton Length (in.):	13.13
Ship Carton Width (in.):	6.50
Ship Carton Height (in.):	8.50
Ctn Weight (Lbs.):	4.04
Pallet Qty:	420.00
UPC Number:	050169561317
I2of5:	50050169561312