

Twist-Lock® Devices

50A, 125/250V, 3 Pole, 4 Wire Grounding

Flanged Inlet

HUBBELL

Features

- Metallic flanged casing provides maximum strength and protection
- Thermoset interior provides superior heat resistance

Ordering Information

Description	Device Style	UPC	Catalog Number
PBT housing and flange	Gray	783585369594	HBL6375S

Listings

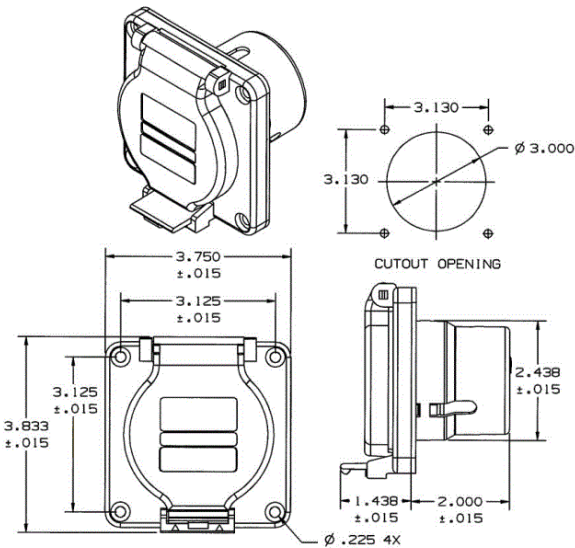
Listed to UL 498  
Certified to CSA C22.2 No.42

Specifications

Casing	Steel, zinc plated
Terminal Retainer	Phenolic
Blades	Brass
Terminal Screws	Steel

Performance

<b>Electrical</b>	
Current Interrupting	Certified for current interrupting at full rated current
Dielectric Voltage	Withstands 2,000V minimum
<b>Mechanical</b>	
Terminal Accommodation	#10 AWG - #6 AWG solid or stranded copper wire only
<b>Environmental</b>	
Flammability	UL 94 V0
Operating Temperatures	Maximum continuous 75°C; minimum -40°C (w/o impact)



Accessories

Connector	CS6364C
Inlet Accommodation	50A Spider® II Temporary
Inlet Box Accommodation	BB2030N

Online Resources

Customer Use Drawing  
eCatalog  
Installation Instructions



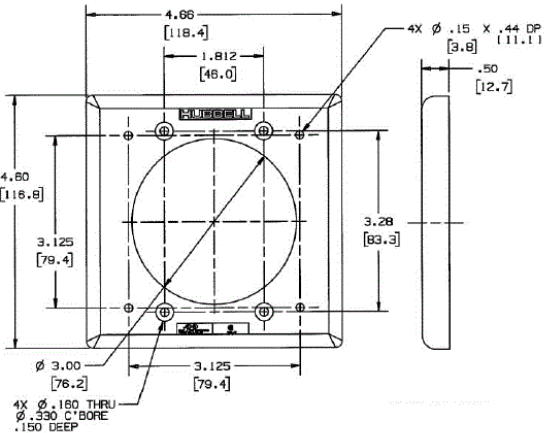
Ordering Information

Description	Device Color	UPC	Catalog Number
Adapts 16, 20, 30 and 32A Watertight IEC Pin and Sleeve devices	Gray	78358549540	HBL2030AP



Specifications

Accessory Item	Adapter Plate
----------------	---------------

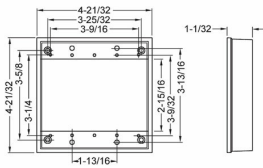


Accessories

Recepatcle/Inlet Accommodation 16A, 20A, 30A & 32A IEC Pin & Sleeve  
Recepatcle/Inlet Accommodation Watertight Safety-Shroud®

Resources

Customer Use Drawing  
eCatalog

**TWO GANG EXTENSION & THREE GANG BOX****1-1/32 in. Deep Extension - 4-21/32 in. x 4-21/32 in.  
N/A****D07**

Catalog #: 5407-0

**APPLICATIONS**Used to provide additional capacity needed for NEC box fill requirements  
N/A**PRODUCT FEATURES**Rugged seamless construction  
State-of-the-art powder coat finish provides maximum weatherability and scratch resistance  
Installation hardware and gasket provided  
Multi-lingual instructions in each package  
Includes gasket and mounting hardware**UL LISTED**

File E195978

**CSA**

C22.2 No. 18

**NEMA**

3R Rated

**GENERAL PRODUCT INFORMATION**

Color: Gray

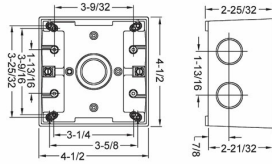
**CONFIGURATION**Number Of Outlets: ----  
Gangs: 2**PRODUCT MEASUREMENTS**Depth: 1-1/32 in..  
Outlet Size: ----  
Cubic Inches (cm3): 16.0 (262.2)  
Wt. Ea. (Lbs.): 0.485**PACKAGING**Package Type: Shrink  
Std. Pkg.: 10  
Product UPC-A Labeled: Yes  
Weight (Lbs. Per/C): 48.50  
Ship Carton Length (in.): 16.19  
Ship Carton Width (in.): 4.25  
Ship Carton Height (in.): 8.50  
Ctn Weight (Lbs.): 4.85  
Pallet Qty: 1500.00  
UPC Number: 050169540701  
I2of5: 50050169540706



## TWO GANG BOXES - 2 IN. TO 2-5/8 IN. DEEP

2-5/8 in. Deep with Lugs - Five Threaded Outlets - 4-1/2 in. x 4-1/2 in.  
N/A

D06



Catalog #: 5389-0

## APPLICATIONS

For use in branch circuit wiring in wet, damp, or dry locations  
May be used as a weatherproof junction box, or as a housing for receptacles, switches, and GFCI's

## PRODUCT FEATURES

Reinforced connector outlets  
State-of-the-art powder coat finish provides maximum weatherability and scratch resistance  
Eight box mounting options with detachable lugs  
Two closure plugs included  
Hubs accept all threaded fittings and threaded conduit  
Ground screw installed  
Multi-lingual instructions in each package  
Includes gasket and mounting hardware  
N/A

## UL LISTED

File E195978

## CSA

C22.2 No. 18

## NEMA

3R Rated

## GENERAL PRODUCT INFORMATION

Color: Gray

## CONFIGURATION

Number Of Outlets: 2  
Gangs: 2

## PRODUCT MEASUREMENTS

Depth: 2-5/8 in.  
Outlet Size: 1 in.  
Cubic Inches (cm<sup>3</sup>): 36.0 (589.9)  
Wt. Ea. (Lbs.): 1.139

## PACKAGING

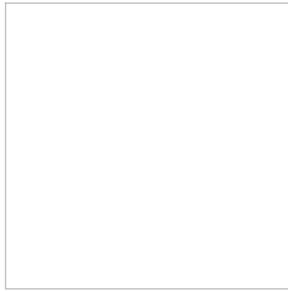
Package Type: Shrink  
Std. Pkg.: 9  
Product UPC-A Labeled: Yes  
Weight (Lbs. Per/C): 113.90  
Ship Carton Length (in.): 16.19  
Ship Carton Width (in.): 6.50  
Ship Carton Height (in.): 8.50  
Ctn Weight (Lbs.): 10.25  
Pallet Qty: 810.00  
UPC Number: 050169538906  
I2of5: 50050169538901



**CLOSURE PLUGS**

**Closure Plugs**  
**1 in. NPT**

**D28.1**



Catalog #: 5271-0

**APPLICATIONS**

For use with BELL® weatherproof boxes, extensions, cluster covers and round splice boxes to seal off unused outlets.  
N/A

**PRODUCT FEATURES**

Gray closure plugs are zinc die cast  
White and bronze closure plugs are non-metallic  
\* Order in standard package bag quantities only - not per piece  
\*\* Order in standard package card quantities only - not per piece

**UL LISTED**

File E195978

**GENERAL PRODUCT INFORMATION**

Color: Gray

**PRODUCT MEASUREMENTS**

Wt. Ea. (Lbs.): 0.240

**PACKAGING**

Package Type: Polybag of 4  
Std. Pkg.: 75 Bags\*  
Product UPC-A Labeled: Yes  
Weight (Lbs. Per/C): 24.00  
Ship Carton Length (in.): 15.50  
Ship Carton Width (in.): 4.00  
Ship Carton Height (in.): 8.00  
Ctn Weight (Lbs.): 18.00  
Pallet Qty: 13500.00  
UPC Number: 050169527108  
I2of5: 50050169527103

# BOX MOUNTING LUG CATALOG NO. 5302-0

1/4" DIA. (2-HOLES)

