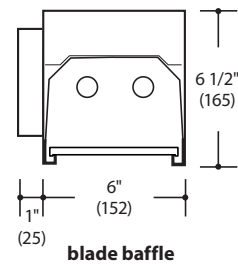
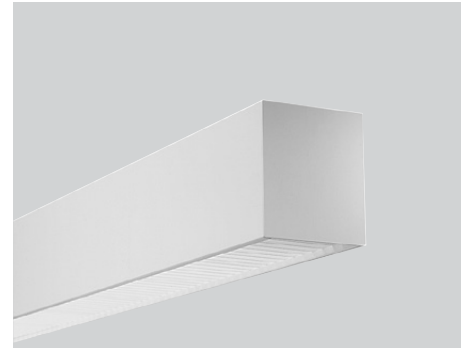


Fixture Type:

Project Name:

Ordering Guide

| Feature | Code | Options | Description |
|------------------------------------|------|---|--|
| Series | | 66 | MOD |
| Mounting | | W | Wall-Mount |
| Fixture distribution | | D | Direct |
| Row length (in feet) | | ____' | Enter in foot increments. Note fixture lengths below. |
| Max length in row | | 02 03 04 06 08 | 2', 610mm 3', 914mm 4', 1219mm 6', 1829mm 8', 2438mm |
| Downlight diffuser | | BW BWO PS PW PSO PWO XA PAT19 SGL | Blade Baffle, White Blade Baffle, White w/Overlay Parabolic Baffle, Semi-Specular Aluminum Parabolic Baffle, White Parabolic Baffle, Semi-Specular w/Overlay Parabolic Baffle, White w/Overlay 3/16" Conical Prismatic 3/16" Square Prismatic Soft Glow Lens |
| Finish/Color | | C1 C2 C3 C4 C5 C6 CC | Matte White (Default) Textured, Matte White Light Silver Machined Aluminum Carbon Black Textured, Camera Black Custom Color |
| Lamping | | 1T5 1T5HO 1T8 2T5 2T5HO 2T8 | 1-Light T5 Lamping 1-Light T5HO Lamping 1-Light T8 Lamping 2-Light T5 Lamping 2-Light T5HO Lamping 2-Light T8 Lamping |
| Ballast (non-dimming T5/HO) | | NPN | Electronic, program-start |
| Ballast (non-dimming T8) | | NIN NPN NIL NPL NIH NPH | Electronic Electronic, program-start Electronic, low-wattage Electronic, low-wattage, program-start Electronic, high light output Electronic, high light output, program-start |
| Ballast (dimming) | | 010V LVD DALI LLS | 0-10V Dimming Line Voltage Dimming Dali System Light Level Switching 50/100 See <i>Ballast</i> section for additional dimming ballast options |
| Circuiting | | 1C 2C AC AF | 1 Circuit 2 Circuit-Uplight/Downlight Alternate Lamp Compart Switch Alternate Fixture Switching |
| Voltage | | UNV 120 277 347 | Universal Voltage 120 Volt 277 Volt 347 Volt |



Key Features

- 6" rectilinear form factor

 **Quick Find** litecontrol.com

66-W-D

Ordering Guide (continued)

| Optional Features | Code | Options | Description |
|----------------------------------|------|---------------------------------|--|
| Nightlight | | _NL | Nightlight Circuit Required. Enter quantity. 2NL = 2 nightlight circuits/row |
| Emergency | | _EF | Emergency Battery Required. Enter quantity. 2EF = 2 emergency batteries/row |
| Automatic Transfer Switch | | _ATS | Automatic Transfer Switch Required. Enter quantity. 2ATS = 2 automatic transfer switches/row |
| Thru-wiring | | W1 W2 W3 W4 | No Thru Wire Provide Normal and Emergency Thru Wiring* Provide Normal Thru Wiring Only Provide Emergency Thru Wiring Only *Only applicable when specified with emergency |
| Data connection | | _DCF | Data connection cables required. Enter quantity. 2DCF = 2 cables/row |
| Pattern boxes | | PBE PBI PBC PBT PBX | Pattern Box, "E" End Pattern Box, "I" Intermediate Pattern Box, "C" Corner Pattern Box, "T" Shape Pattern Box, "X" Shape |
| Fuse | | F | Fuse |

Details

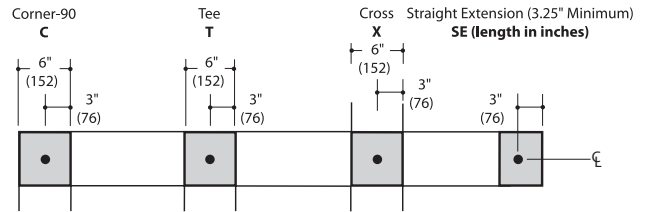
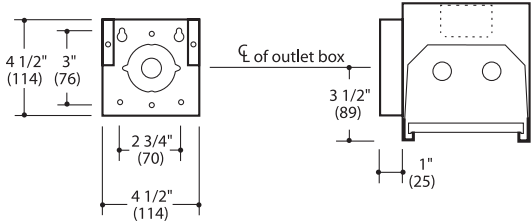
Construction:

Housing-steel.
End caps-steel. Flat style.

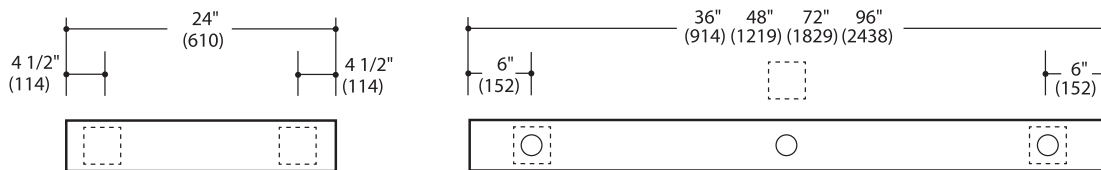
Mounting:

For special system connectors needed to exactly fill a wall or follow a perimeter, field-measured dimensions may be required from the job site. Minimum SE length is 3.25". Please refer to Field Measurement Procedure for instructions.

Wall brackets



Individual fixtures



- Indicates wall mounting bracket location
- 2 1/2" diameter knockout (in fixture)

Distribution:

100% direct.

Downlight diffuser:

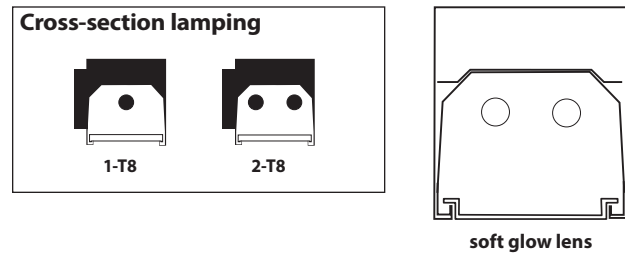
- BW-Blade Baffle, White
- BWO-Blade Baffle, White w/Overlay
- PS-Parabolic Baffle, Semi Specular Aluminum
- PW-Parabolic Baffle, White
- PSO-Parabolic Baffle, Semi-Specular w/Overlay
- PWO-Parabolic Baffle, White w/Overlay
- XA-3/16" Conical Prisms
- PAT19-3/16" Square Prisms
- SGL-Soft Glow Lens

Finish/Color:

Visit www.litecontrol.com/finishes for details.

Lamping:

Available in one-lamp or two-lamp T5/T5HO & T8 configurations for uplight and downlight chambers.



Details (continued)

Ballast:

Electronic Ballast (**ELB**), high power factor, thermally protected Class P, Sound Rated A, less than 10% THD, manufactured by a UL Listed manufacturer, as available, determined by Litecontrol. Ballasts with a voltage range of 120 to 277 will be used when fixture configuration and ballast availability allow. The minimum number of ballasts will be used.

Additional Dimming Ballast Options:

| | | |
|------|------------------------------|--------------------------------|
| LE30 | Lutron EcoSystem-3 Wire | <i>(Normal Ballast Factor)</i> |
| LEH0 | Lutron EcoSystem-H Series | <i>(Normal Ballast Factor)</i> |
| LEH7 | Lutron EcoSystem-H Series | <i>(High Ballast Factor)</i> |
| LEI0 | Lutron EcoSystem-Intelligent | <i>(Normal Ballast Factor)</i> |
| LH3D | Lutron HiLume 3D-3 Wire | <i>(Normal Ballast Factor)</i> |
| LH37 | Lutron HiLume 3D-3 Wire | <i>(High Ballast Factor)</i> |
| LHHL | Lutron HiLume-Traditional | <i>(Normal Ballast Factor)</i> |
| LHID | Lutron HiLume-3D Intelligent | <i>(Normal Ballast Factor)</i> |
| LHI7 | Lutron HiLume-3D Intelligent | <i>(High Ballast Factor)</i> |

Circuiting:

1C-1 Circuit
2C-2 Circuit-Up In-board/Out-Board
AC-Alternate Lamp Compart Switch
AF-Alternate Fixture Switching

Nightlight:

See separate LC-Nightlight spec sheet for additional details.

Emergency:

Battery-powered ballast from a listed manufacturer will operate one lamp for 90 minutes.

Thru wiring:

See separate LC-Thruwire spec sheet for additional details.

Fuse:

Slow or fast blow; determined by Litecontrol.

Ratings:

UL listed for damp locations. IBEW. AF of L.

Warranty:

1 year
see www.litecontrol.com for details