

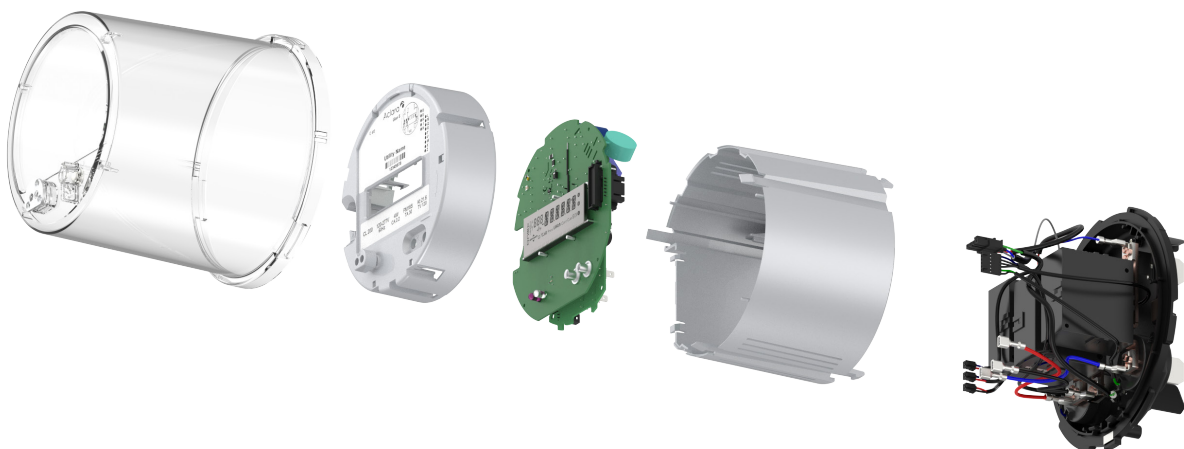
kV2c Gen5 Meter with Polyphase Service Switch

Aclara is proud to introduce the kV2c Gen 5 Form 16S 200-amp meter with a 200-amp Remote Service Switch. The integrated 200-amp service switch will enable utilities to manage operational work practices to safely manage their polyphase commercial and large residential customers. The functionality and features of the service switch are like the Aclara residential meter products.

The kV2c Gen 5 16S CL200 meter with 200-amp Service Switch is available for order from Aclara distributors and sales representatives.

Key Features

- 5,000 Operations @ Full 200A
- Industry Compliant
- UL Certification (UL2735) - pending
- Load Management Configurations
- Robust design and testing
- Diverse integrated AMI options



kV2c Gen5 Meter with Polyphase Service Switch

Advanced Configuration

The kV2c family of meters is designed for configurable options for specific data needs and complex rate requirements.

Optional advanced functions available such as:

- Reactive power measurement for power factor rate applications
- Power quality and event logging for specific case investigations
- Supports up to 20 channels of Load Profile data

Remote Disconnect (RD) option improves operational efficiency and adds options like:

- Demand side management
- Prepay configuration
- Controlled outage restoration

Tamper detection tools that show:

- Errors
- Wiring changes
- Billing issues

Reliability

- Over 130 years of designing and building high-quality, accurate, and reliable meters
- Highly Accelerated Life Testing (HALT) assures reliability over the life of the meter
- Industry leading software suite, MeterMate™, eases configuration effort and increases diagnostic details for lower operational costs

Communications

Broad AMI options including:

- Radio frequency point-to-multipoint
- Cellular
- Radio frequency mesh (RF Mesh)

Rigorous validation of AMI integration to ensure reliability and control cost of ownership

Technical Specifications

Available Forms	16S with three-phase relay. Not available with Fitzall option.
Accuracy	±0.2% Class 0.2 per ANSI C12.20
Voltage	120 V to 277 VAC (± 20%) Line-Neutral Wye Services Only
Current	200 amp
Frequency	50 or 60 Hz
Temperature	-40°C to 85°C
Relative Humidity	< 95%
Weight	4.3 lbs (including Remote Disconnect)
Dimensions	7" Diameter; 7 5/8" Height (Terminal to top of Cover)
Relay Type	3 phase (A, B, and C) latching relay
Relay Current Rating	200 amp maximum current
Service Switch	5,000 operations at full rated current (200A) 30,000 operations at test amp rating (30A)
Power Consumption¹ (not including AMI option boards)	
On Phase A at 277 V	1.2 W typical
On Phase B and C at 277 V	0.3 W typical
Load-side Voltage Threshold²	User programmable; 0 VAC min, 50 VAC max
Maximum Switching VA	44kVA per phase
Standards	ANSI C12.1, C12.10, C12.20, C12.19, C12.20 IEEE C37.90.1 UL2735 (pending)

¹ Relay is powered by the meter's internal 20 volt supply.

² RMS voltage above which the meter will indicate that load-side voltage is present.



A proud member of the Hubbell family.

©2024 Aclara. All rights reserved.
Hubbell and the Hubbell logo are registered trademarks or trademarks of Hubbell Incorporated. All other trademarks are the property of their respective owners.
www.hubbell.com/aclara | aclara@hubbell.com | 800-297-2728
Follow us on X @AclaraSolutions