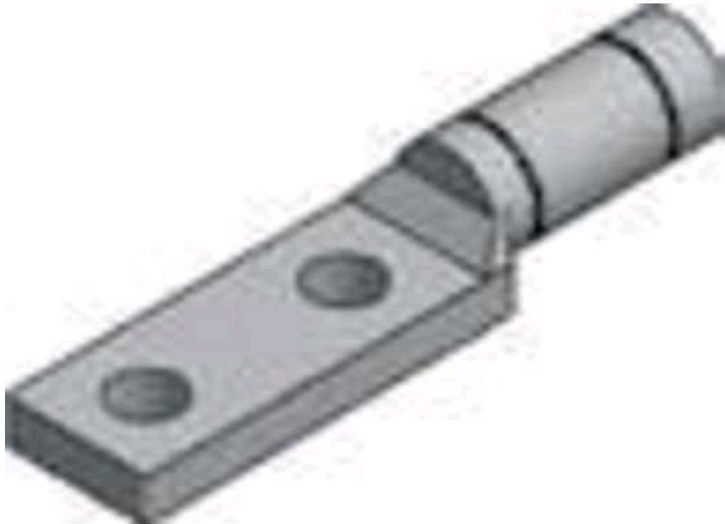


# AHL1000

by CMC  
Catalog ID: AHL1000



Aluminum Two-Hole, NEMA Compression Stacking Lugs

- Standard mounting hole diameter is .562" for 1/2" bolts
- Offset heights and mounting pad dimensions allow ATL lugs to be stacked on AHL lugs so two conductors can be connected to each NEMA two-hole position on a terminal spade
- Connectors are pre-filled and plugged with electrical joint compound
- Marked with catalog number, conductor size and die reference
- Meets performance requirements of ANSI C119.4
- Bottom Lug

## Product Details

### General

Material	Aluminum
Number of Holes	2
UPC	192663118816

### Dimensions

Length	7.88 in
Thickness	0.56 in
Width	1.63 in