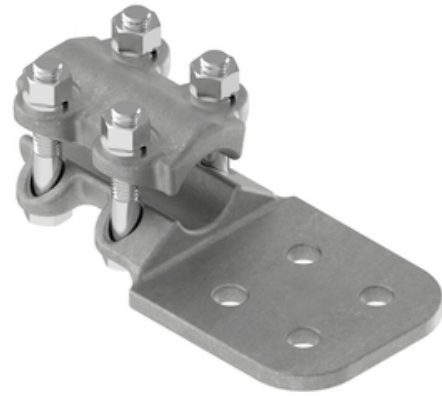


Terminal, Aluminum Bolted

By ANDERSON
Catalog # [ACF13D](#)

Bolted aluminum alloy straight terminal for connecting aluminum cable to aluminum or copper flat pad combinations.



Features

- NEMA D 4-Hole flat terminal
- Cable Diameter Range: 1.081-1.293 inches
- Conductor Ranges: 900 - 1250 MCM AAC and 715 - 1113 ACSR
- Material: Castings - 356-T6 aluminum alloy, Clamping Hardware - aluminum alloy
- Side formed tongues are standard to allow clearance for flush mounting. 45° and 90° angled tongues may be obtained by specifying desired angle in the catalog number along with which pad contact surface ("X" or "Y") should be machined. Example: ACF11CY90
- To obtain cable grooves coated with a petroleum base sealant, add "XB" suffix to catalog number. Example: ACF15DY90XB
- Clamping bolts have hex-stops for one-wrench installation.
- Contact sealant is recommended.

General

EU RoHS Indicator	No
Material	Aluminum
Material - Clamping Hardware	Aluminum Alloy
Number of Bolt Holes	4
Number of Ground Braid Lug Holes	0
Number of Pad Holes	4
Type	Bolted Lugs & Terminals
UPC	096359279150

Dimensions

Angle - Pad	180 °
Base Hole Spacing	0 in
Diameter - Base Holes	0 in
Diameter - Bolt	0 in
Diameter - Inside	0 in
Length - Coupling	0 in
Length Before Compression	0 in
Weight	2.058 lb
Width - Pad	4 in

Electrical Ratings

Maximum Current Rating Amps 0
Continuous

Conductor Related

Conductor Compatibility	ACSR-Redwing-715.5-30/19;ACSR-Cuckoo-795-24/7;ACSR-Drake-795-26/7;ACSR-Condor-795-54/7;ACSR-Mallard-795-30/19;ACSR-Ruddy-900-45/7;ACSR-Canary-900-54/7;ACSR-Rail-954-45/7;ACSR-Cardinal-954-54/7;ACSR-Ortolan-1033.5-45/7;ACSR-Curlew-1033.5-54/7;ACSR-Bluejay-1113-45/7;ACSR-Finch-1113-54/19;AAC-Cockscomb-900-37;AAC-Snapdragon-900-61;AAC-Magnolia-954-37;AAC-Goldenrod-954-61;AAC-Camellia-1000-61;AAC-Bluebell-1033.5-37;AAC-Larkspur-1033.5-61;AAC-Marigold-1113-61;AAC-Hawthorn-1192.5-61
Conductor Diameter - Maximum	1.293 in
Conductor Diameter - Minimum	1.081 in
Conductor Diameter Range	1.081 - 1.293
Conductor Type	AAC ACSR

Logistics

Pallet Quantity

480

Product Assets

[Catalogs - Substation Connectors \(SA\)](#)

[Sales Drawings - C-4183 \(ACF Bolted Product Family\)](#)

[Video - Hubbell Power Systems 3D Portal to help with developing 3D models of substation connector products](#)

[Video - Hubbell Power Systems Quick Ship](#)



A Hubbell brand

©2024 Hubbell Incorporated. All rights reserved
AN-ACF13D-SPEC-EN | REV 6/2024