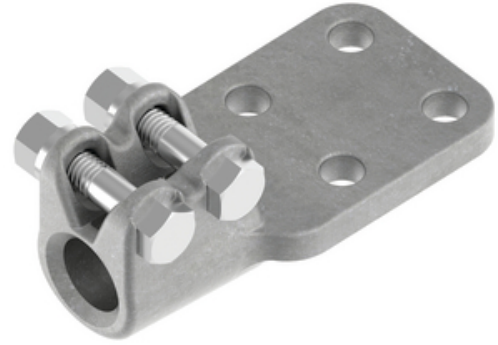


Stud Connector, Aluminum

By ANDERSON
Catalog # [ADSF141C3812](#)

Aluminum alloy stud connector is used to connect aluminum flat to aluminum or copper equipment stud.



*Representative Image

Features

- Bolted Stud to Flat Connector
- Stud Diameter/Thread: 1-1/2"-12
- 3/8 inch thick NEMA C 4-Hole Flat Pad
- Contact surfaces are finished on both sides of the pad.
- Material: Casting - 356-T6 aluminum alloy, Stud Mounting Hardware - aluminum alloy
- Clamping bolts have hex-stops for one-wrench installation.
- Contact sealant is factory installed in connector stud threads and is recommended for conductor installation.
- To specify 90 degree connector, add suffix "90" to catalog number. Example: ADSF141D389012

General

EU RoHS Indicator	No
Material	Aluminum
Material - Clamping Hardware	Aluminum Alloy
Number of Ground Braid Lug Holes	0
Number of Pad Holes	4
Number of Stud Threads	12
Type	Stud to Flat
UPC	096359281986

Dimensions

Angle - Stud to Pad	180 °
Base Hole Spacing	0 in
Diameter - Base Holes	0 in
Diameter - Bolt	0 in
Diameter - Inside	0 in
Diameter - Stud	1.5 in
Length - Coupling	0 in
Length Before Compression	0 in
Weight	2.254 lb
Width - Pad	3 in

Electrical Ratings

Maximum Current Rating Amps 0
Continuous

Product Assets

[Catalogs - Substation Connectors \(SA\)](#)
[Sales Drawings - C-9672 \(ADSF Product Family\)](#)
[Video - Hubbell Power Systems 3D Portal to help with developing 3D models of substation connector products](#)
[Video - Hubbell Power Systems Quick Ship](#)



A Hubbell brand

©2024 Hubbell Incorporated. All rights reserved
AN-ADSF141C3812-SPEC-EN | REV 6/2024